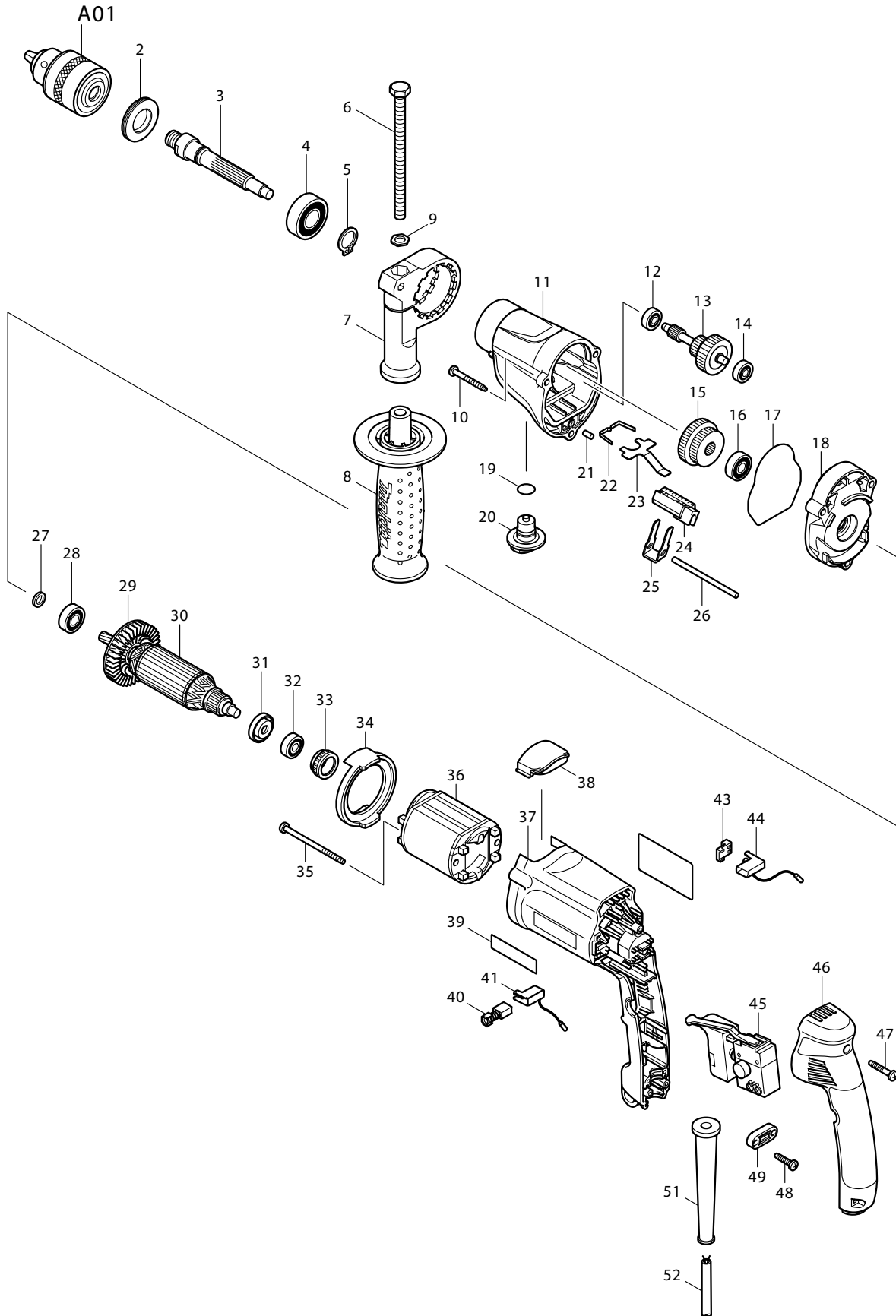




09 - 2007
DP4010
1/2" 2-SPEED DRILL



Item#	Part#	Description	Q'ty	Unit
2	285806-9	BEARING RETAINER 19-36	1	PC.
3	324835-8	SPINDLE	1	PC.
4	211206-7	BALL BEARING 6202LLB	1	PC.
5	961055-9	RETAINING RING S-15	1	PC.
6	921923-8	HEX. BOLT M8X120	1	PC.
7	417630-4	GRIP BASE	1	PC.
8	152521-9	GRIP 36 COM (INCLUDES 931402-8 - HEX. NUT M8)	1	PC.
9	345280-4	HEX. WASHER	1	PC.
10	266351-3	TAPPING SCREW 4X35	3	PC.
11	318187-7	GEAR HOUSING	1	PC.
12	210028-2	BALL BEARING 606ZZ	1	PC.
13	153622-6	GEAR COM	1	PC.
14	210028-2	BALL BEARING 606ZZ	1	PC.
15	227030-8	SPUR GEAR 29-37	1	PC.
16	210029-0	BALL BEARING 608ZZ	1	PC.
17	421810-6	SEAL RING	1	PC.
18	158412-2	GEAR HOUSING COVER COM (INCLUDES 263002-9 - RUBBER PIN 4)	1	PC.
19	213122-9	O RING 12	1	PC.
20	417805-5	CHANGE LEVER B	1	PC.
21	256251-5	PIN 4	1	PC.
22	232143-2	LEAF SPRING	1	PC.
23	345225-2	LOCK PLATE	1	PC.
24	417804-7	RACK 12	1	PC.
25	345223-6	CHANGE PLATE B	1	PC.
26	268092-7	PIN 4	1	PC.
27	262087-2	RING 8	1	PC.
28	210005-4	BALL BEARING 608DDW	1	PC.
29	241881-5	FAN 52	1	PC.
30	517411-7	ARMATURE ASSY (INCLUDES ITEMS 27, 28, 29, 31 & 32)	1	PC.
31	681636-0	INSULATION WASHER	1	PC.
32	211021-9	BALL BEARING 607LLB	1	PC.
33	421494-0	RUBBER RING 19	1	PC.
34	417803-9	BAFFLE PLATE	1	PC.
35	266340-8	TAPPING SCREW 4X65	2	PC.
36	633525-5	FIELD 115V	1	PC.
37	417807-1	MOTOR HOUSING	1	PC.
38	450179-1	CAP	1	PC.
40	191927-6	CARBON BRUSH CB-407, 2PCS/SET	1	SET
41	643989-5	BRUSH HOLDER	1	PC.
43	689111-0	SPACER	2	PC.
44	643988-7	BRUSH HOLDER	1	PC.
45	650524-2	SWITCH TG813ALB-2, SINGLE	1	PC.
46	153284-0	HANDLE COVER COM (INCLUDES 2X263002-9 - RUBBER PIN 4)	1	PC.
47	266374-1	TAPPING SCREW 4X25	3	PC.
48	266326-2	TAPPING SCREW 4X18	2	PC.
49	687123-7	STRAIN RELIEF	1	PC.
51	682559-5	CORD GUARD 8	1	PC.
52	664891-9	CORD W/PLUG 2P-18-2.5M, SJO	1	PC.
100	654121-6	TAB	4	PC.
101	410102-8	KEY HOLDER	1	PC.

Item#	Part#	Description	Q'ty	Unit
<u>ACCESSORIES</u>				
A01	193067-6	DRILL CHUCK & KEY SET(INCLUDES ITEM A02)	1	SET
A02	763430-3	CHUCK KEY S13	1	PC.
A03	324219-0	DEPTH GAUGE	1	PC.