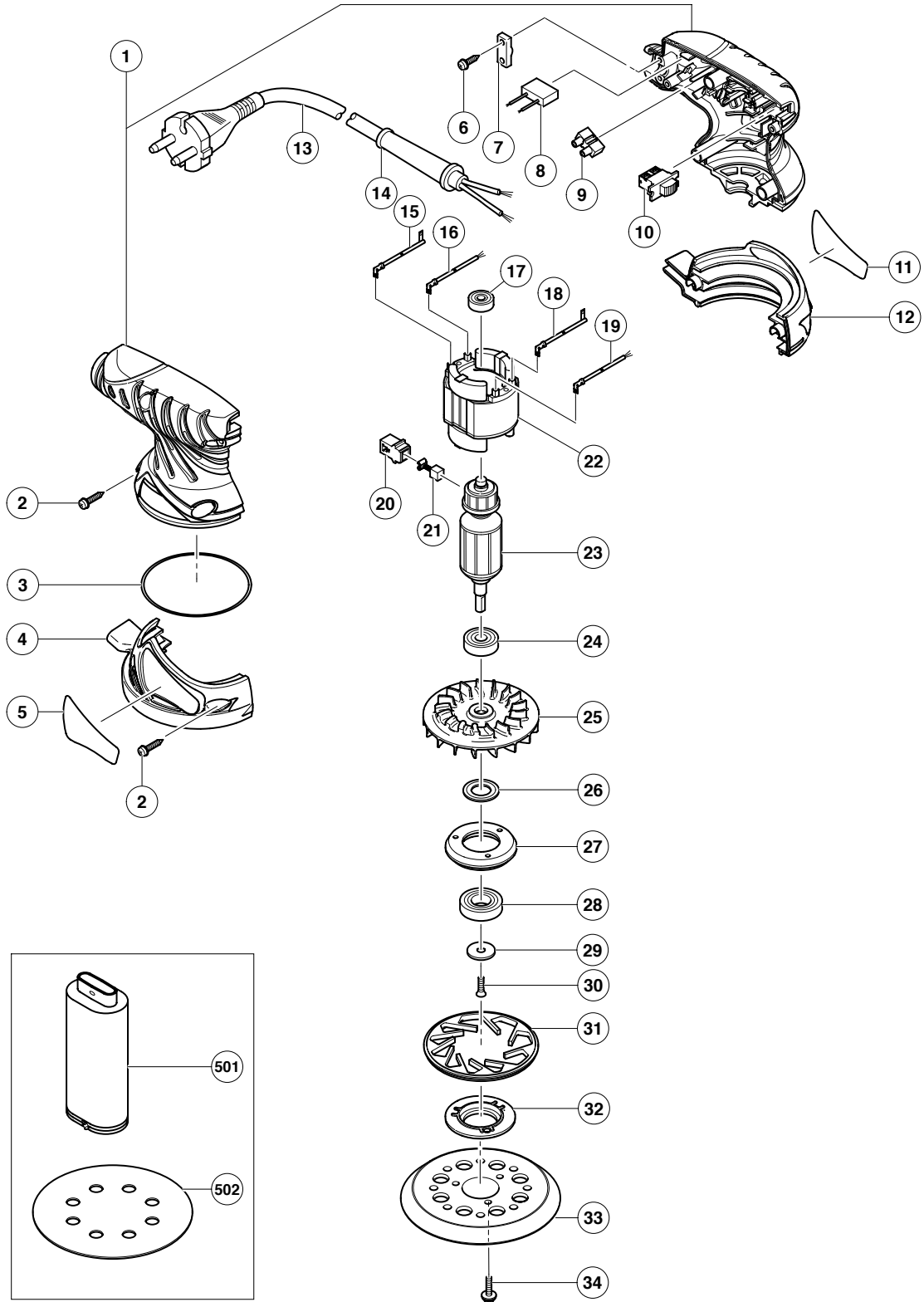


## ELECTRIC TOOL PARTS LIST

**RANDOM ORBIT SANDER**  
**Model SV 13YB**

**2005 · 6 · 1**  
**(E1)**



## PARTS

SV 13YB

ITEM NO.	CODE NO.	DESCRIPTION	NO. USED	REMARKS
1	324-214	HOUSING (A).(B) SET	1	
2	301-653	TAPPING SCREW (W/FLANGE) D4X20 (BLACK)	7	
3	993-195	O-RING	1	
4	324-207	LOWER COVER (B)	1	
5		NAME PLATE	1	
6	984-750	TAPPING SCREW (W/FLANGE) D4X16	2	
7	937-631	CORD CLIP	1	
*	8	NOISE SUPPRESSOR	1	FOR AUS, NZL, GBR, EUROPE, FIN, NOR, SWE, DEN, CHN
	9	PILLAR TERMINAL	1	
	10	SLIDE SWITCH (1P SCREW TYPE)	1	
	11	HITACHI LABEL	1	
	12	324-206 LOWER COVER (A)	1	
*	13	500-409Z CORD	1	(CORD ARMOR D8.8)
*	13	500-468Z CORD	1	(CORD ARMOR D8.8) FOR THA, CHN
*	13	500-240Z CORD	1	(CORD ARMOR D8.8) FOR USA, CAN
*	13	500-423Z CORD	1	(CORD ARMOR D8.8) FOR SIN
*	13	500-439Z CORD	1	(CORD ARMOR D8.8) FOR AUS, NZL
*	13	500-461Z CORD	1	(CORD ARMOR D8.8) FOR GBR
	14	953-327 CORD ARMOR D8.8	1	
	15	322-764 INTERNAL WIRE (BROWN)	1	
	16	322-761 TAB TERMINAL (BLUE)	1	
	17	626-VVM BALL BEARING 626VVC2PS2L	1	
	18	322-763 INTERNAL WIRE (BLUE)	1	
	19	322-762 TAB TERMINAL (BROWN)	1	
	20	930-483 BRUSH HOLDER	2	
	21	999-041 CARBON BRUSH (1 PAIR)	2	
*	22	340-618C STATOR 110V	1	
*	22	340-618D STATOR 120V	1	
*	22	340-618E STATOR 220V-230V	1	
*	22	340-618F STATOR 240V	1	
*	23	360-698C ARMATURE 110V	1	
*	23	360-698U ARMATURE ASS'Y 120V	1	INCLUD. 17, 24
*	23	360-698E ARMATURE 220V-230V	1	
*	23	360-698F ARMATURE 240V	1	
	24	629-VVM BALL BEARING 629VVC2PS2L	1	
	25	324-521 BALANCE FAN	1	
	26	324-208 DUST WASHER	1	
	27	324-212 BEARING HOLDER	1	
	28	600-2DW BALL BEARING 600DDWCMP2L	1	
	29	309-422 WASHER	1	
	30	993-244 SEAL LOCK FLAT HD. SCREW M4X12	1	
	31	324-210 BRAKE	1	
	32	324-211 BEARING COVER	1	
	33	324-209 PAD (PRESSURE SENSITIVE TYPE)	1	
	34	307-109 SEAL LOCK SCREW (W/WASHERS) M4X16 (BLACK)	3	

**STANDARD ACCESSORIES**

SV 13YB

ITEM NO.	CODE NO.	DESCRIPTION	NO. USED	REMARKS
* 501	310-339	DUST BAG	1	
* 501	323-004	DUST BAG	1	FOR USA, CAN
502	308-519	SANDING DISCS 125MM A-P120 (5 PCS.)	1	

**OPTIONAL ACCESSORIES**

ITEM NO.	CODE NO.	DESCRIPTION	NO. USED	REMARKS
601	308-516	SANDING DISCS 125MM A-P40 (5 PCS.)	1	
602	308-517	SANDING DISCS 125MM A-P60 (5 PCS.)	1	
603	308-518	SANDING DISCS 125MM A-P80 (5 PCS.)	1	
604	308-520	SANDING DISCS 125MM A-P180 (5 PCS.)	1	
605	308-521	SANDING DISCS 125MM A-P240 (5 PCS.)	1	
606	308-522	SANDING DISCS 125MM A-P320 (5 PCS.)	1	
607	308-523	SANDING DISCS 125MM A-P400 (5 PCS.)	1	
608	308-515	POLYESTER BUFF (3 PCS.)	1	

