



INSTRUCTIONS & PARTS LIST FOR SRW03S-25, SRW03S-38, SRW07-38 & SRW07-50 SIOUX RATCHETS SERIAL "A"

Read and understand these instructions before operating this tool.
SAVE THESE INSTRUCTIONS!

⚠ WARNING



When used improperly power tools can create hazardous situations.
Everyone using, maintaining, changing accessories or working near this tool must read, understand and follow these Safety Instructions!
Improperly used power tools can cause injury or death.

Air Ratchet Safety Messages



Power tools can cause flying particles during use.
Wear safety goggles, user and bystanders.
Flying particles can cause injury.



Power tools generate noise.
Wear hearing protection, user and bystanders.
Prolonged exposure to noise can cause hearing loss.



Power tools vibrate.
Avoid prolonged exposure to vibration, repetitive motions and uncomfortable positions.
Stop using the tool if discomfort, tingling feeling or pain occurs. Seek medical advice before resuming use.
Prolonged exposure to vibration, repetitive motions and uncomfortable positions can cause injury.



Risk of contamination from hazardous dust.
Wear an approved dust mask or respirator when using power tools that create dust.
Some dust created by power sanding, sawing, grinding, drilling and other construction activities contains chemicals known to cause cancer, birth defects or other reproductive harm.
Inhaling hazardous dust can cause injury.



Sudden changes in motion or position can occur while using the tool.
Anticipate and be alert for changes in motion during start up and operation.
Maintain a secure grip.
Anticipate reaction force. Adjust your stance and hold tool securely.
Observe the position of the reverse mechanism before operating the tool and be aware of rotation direction when you press the trigger.
Sudden changes in motion or position can cause injury.



Risk of entanglement.
Keep body parts away from moving parts.
Do not wear loose clothing and jewelry while operating tool.
Wear protective hair covering to contain long hair.
Do not carry tool with your finger on the trigger.
Remove adjusting keys or wrenches before turning the tool on.
Do not lock, tape, wire, etc., the trigger in the ON position.
Keep handle dry, clean and free from oil and grease.
Always shut off air supply and disconnect tool from air supply when changing accessories.
Entanglement can cause injury.



Flammable vapors can explode.
Do not use near flammable vapors or near a gas line or gas tank.
Direct tool exhaust air away from flames or hot surfaces.
Do not lubricate tools with flammable or volatile liquids such as kerosene, diesel or jet fuel.
Use only recommended lubricants.
Explosion and flames can cause injury.



Lubricating oil is discharged with exhaust air.
Operate tool in a well-ventilated area.
Avoid breathing exhaust air.
Breathing air with oil mist can cause injury.



Electricity can cause electric shock.
Do not use on or near live electrical circuits, or under the influence of medication, drugs or alcohol.
This tool is not insulated against electrical shock.
Electric shock can cause injury.



Work area can contain hazards.
Keep work area clean and well lit.
Stay alert and use common sense when operating tool. Do not operate when fatigued, or under the influence of medication, drugs or alcohol.
Before using the tool, make sure that a shutoff device has been fitted on the supply line and the location is well-known and easily accessible so that the air supply to the tool can be shut off in an emergency.



Snap-on Power Tools, Inc.

Never lay a tool down until the attachment has stopped moving.
 Do not overreach. Keep proper footing and balance at all times.
 Do not allow bystanders to contact tool.
 Keep bystanders at a safe distance from the work area.
 Wear appropriate protective apparel, users and bystanders.
 Direct exhaust air to avoid blowing air or debris from the workpiece onto the user or bystanders.
 When operating in heights, be aware of things below and around you.
 When tool is not in use, shut off the air supply and press trigger or lever to relieve air pressure.
 If tool is not to be used for a period of time, lubricate it, disconnect it from the air supply line and store it in a dry place with moderate temperature.
 Store tools when not being used in a high, dry and locked area that can not be accessed by children.
Work area hazards can cause injury.



Risk of whipping compressed air hoses.
Attach air lines securely.
Check the air hose and fittings regularly for wear.
Do not connect quick-connect couplings directly to the tool.
Use a whip air hose no longer than 60" (150 cm).
Whipping compressed air hose can cause injury.



Untrained users can create hazards.
Secure work with a clamp or a vise whenever possible.
Use the right tool. Do not use a tool that is too light or too heavy for the work.
Do not force tool.
Operate air tools at 90 psig (6.2 bar, 620 kPa) maximum air pressure.
It is expected that users adopt safe working practices and observe all local, regional or country legal requirements when installing, using or maintaining this tool.
Improper use can cause injury.



Improper repairs or lack of maintenance can create hazards.
Do not modify or make temporary repairs. Use only genuine Snap-on replacement parts for maintenance and repair. Servicing and repairs should be performed only by trained personnel.
Do not use the tool if it vibrates too much, makes unusual noises, has loose parts, or shows any other sign of damage.
If tool malfunctions, discontinue use and immediately arrange for service and repair. If it is not practical to remove the tool from service, shut off the tool air supply, write a warning tag and attach the tag to the tool.
Do not remove any manufacturer fitted safety devices (e.g., wheel guards, safety trigger, speed governors).
If this tool becomes damaged beyond repair, disassemble and degrease the tool. Then separate all parts by material type and recycle.
Improper parts, repair or maintenance can cause injury.

⚠ WARNING	
	<p>Using damaged and incorrect sockets or accessories can cause flying particles. Do not use chipped, cracked or damaged sockets or accessories. Use only power or impact sockets and accessories. Use only ball-joint flexible sockets. Do not use square block type flex sockets. When using extensions, hold air ratchet so that socket fits straight on the fastener. <i>Flying particles can cause injury.</i></p>

APPLICATIONS

The Sioux SWR03S Series Air Ratchet is a rugged, variable speed, reversible air ratchet that is ideal for many confined automotive and industrial applications.

It is designed and built to make fast work of light duty fastener turning jobs that do not require more than 35 ft.lb. (47 N•m) torque.

AIR SUPPLY

The efficiency and life of this tool depend on the proper supply of clean, dry air at a maximum of 90 PSI. The use of an air line filter, pressure regulator, and lubricator is recommended.

Before connecting to tools, blow out the air line to remove water and dirt that may have accumulated.

AIR COMPRESSOR

The air compressor should have sufficient capacity to deliver 3.8 cfm (27 SCFM) at 90 psig (6.2 bar, 620 kPa) at each outlet while the tool is running. The receiver tank should have sufficient capacity to provide surge balance for each air tool.

FILTER

A filter should be used to assure clean air for the tool. Water, dirt and scale act as abrasives which could damage the air tool. A filter unit should be installed between the compressor and the air regulator and air lubricator.

AIR STRAINER

An air strainer is built into the removable air inlet bushing located at the rear of the ratchet. To clean, remove the bushing and use an air hose to blow dirt and other particles from the screen and bushing. Torque the air inlet bushing to 100 in. lb. (11.3 N•m).

INSTALLING SOCKETS

The SRW03S-38 uses 3/8" square drive sockets. The SRW03S-25 uses 1/4" square drive sockets. Be sure that only power or impact sockets are used.

TRIGGER

A trigger controls the air flow valve, which regulates the power and speed of the ratchet. The button provides for variable low speed control with feathering ability and progressive, high speed control for high torque requirements. The distance of trigger movement directly controls the amount of air flow to the air motor.

REVERSE MECHANISM

The direction of rotation is determined by the position of the selector knob in the drive body. Be sure the selector knob is positioned fully in either direction before depressing the trigger. Turning the selector knob to the left turns the nut or bolt in a clockwise direction.

SERVICE INSTRUCTIONS

Refer to parts listing. Use only genuine Sioux replacement parts for maintenance and repair. Servicing and repairs should be performed only by trained personnel.

HOSE AND HOSE CONNECTIONS

The air supply hose recommended is 3/8" (10mm) I.D. If an extension hose is necessary, use 1/2" (13mm) ID hose with couplings not less than 3/8" (10mm) I.D.

LUBRICATION

All models may operate without airline lubrication. However, operating the tool without airline lubrication may reduce tool performance and vane life. If an airline lubrication is not used, it is recommended that the tool be oiled daily before use to improve performance. Add 2-4 drops of air motor oil and run the tool for 10-20 seconds to distribute oil through the tool.

For maximum performance and tool life, an air line lubricator, set to deliver 2 drops per minute, is recommended. SIOUX No. 288 Air Motor Oil is recommended.

For Ratchet Mechanism Lubrication

Lubricate the ratchet head assembly with 2 shots of SIOUX #1232A grease every 8 working hours.

Inject grease through the flush-type fitting on the selector knob until fresh grease becomes visible on both sides of the ratchet head.

MAINTENANCE

Water, dust and other airline contaminants can cause rust and vane sticking. For long periods between tool use, flush the tool with a few drops of oil and run for 10 seconds. This will help remove contaminants and reduce the formation of rust.

OPERATION

Speed of the tool may be adjusted by turning the regulator, which is located opposite the throttle lever.

⚠ WARNING

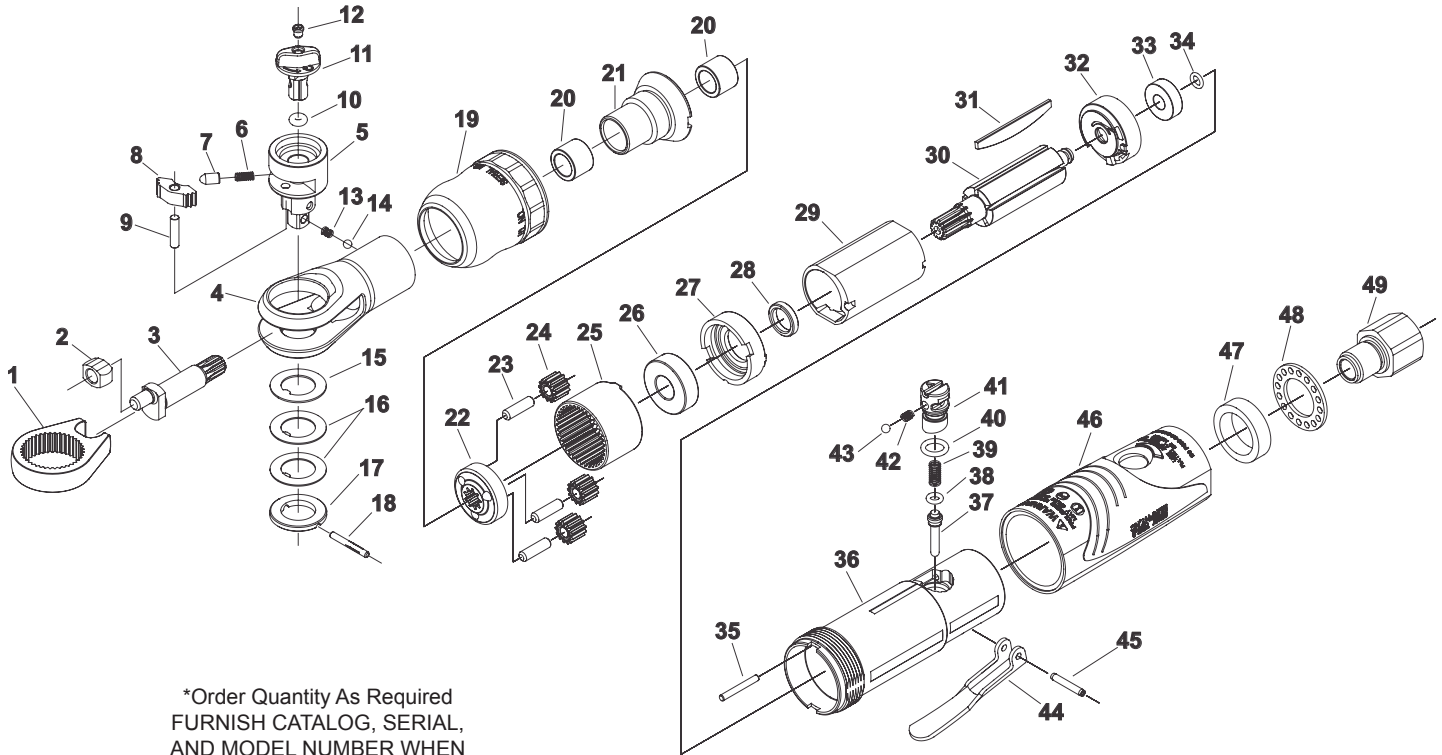


Disconnect tool from air supply before installing or removing sockets or making any adjustments

NOISE AND VIBRATION READINGS

Catalog Number	Noise* (Tested in accordance with ISO Standard 15744)			Vibration* (Tested in accordance with ISO Standard 28927)	
	*Sound Pressure (dBA)	*Sound Power (dBA)	Uncertainty (dBA)	*Vibration m/s ²	Uncertainty m/s ²
SRW03S-25	84.0	95.6	3.0	2.5	0.4
SRW03S-38	84.0	95.6	3.0	2.5	0.4
SRW07-38	91.4	103.0	3.0	9.04	1.89
SRW07-50	91.4	103.0	3.0	9.04	1.89

PARTS LIST FOR SRW03S-25 & SRW03S-38 SIOUX RATCHETS SERIAL "A"



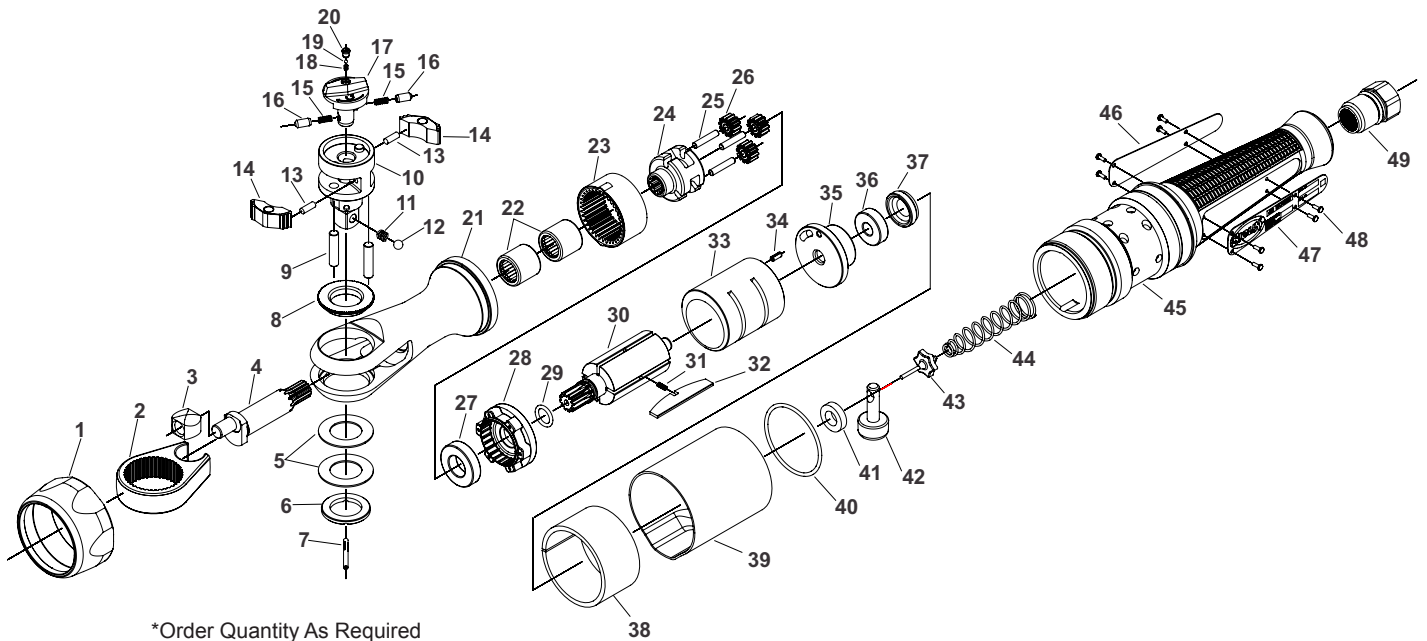
*Order Quantity As Required
FURNISH CATALOG, SERIAL,
AND MODEL NUMBER WHEN
ORDERING PARTS

Fig. No.	Part No.	Description
1	FAR25-8	Ratchet Head
2	FAR25-7	Bar Element
3	PTR200-5	Crank Shaft
4	FAR2500DM2	Ratchet Housing
5	FAR2500-31R	Drivebody (SRW03S-25) (includes items 13 & 14)
	FAR2505-31R	Drivebody (SRW03S-38) (includes items 13 & 14)
6	ME1A228	Plunger Spring
7	FAR25-34A	Plunger
8	FAR25-32A	Pawl
9	ME2A129	Pawl Pin
10	ME7B88	O-Ring
11	FAR25-33B	Selector Knob
12	ESD1333	Grease Zerk
13	ME1A133	Spring (SRW03S-25)
	ESD16	Spring (SRW03S-38)
14	ESD852	Ball (SRW03S-25)
	ESD854	Ball (SRW03S-38)
15	FAR25-12A	Wear Washer
16	ME1G12	Disc Spring (2)*
17	FAR25-41	Groove Washer
18	ME2C80	Spring Pin
19	FAR2500DM11	Clamp Nut
20	ME11B15	Caged Needle Bearing (2)*
21	FAR2500-35	Lock Nut
22	FAR25-100	Gear Carrier Assembly
23	ME2A122A	Pin (3)*
24	FAR25-6	Planet Gear (3)*

Fig. No.	Part No.	Description
25	PTR200-3	Internal Gear
26	ME11A12	Ball Bearing
27	PT100-4	Front End Plate
28	PT100-10	Front End Plate Spacer
29	PT100-7	Cylinder
30	FAR2500-6	Splined Rotor
31	FAR2500-305V	Vane Service Set of 5
32	PT100-5	Rear End Plate
33	ME11A35	Ball Bearing
34	ME7B74	O-Ring
35	ME2A140	Regulator Pin
36	PT100-1	Housing
37	MR2000-13	Valve Stem
38	ME7B97	O-Ring
39	ME1A227	Spring
40	ME7B5	O-Ring
41	MR2000-6	Regulator
42	ME1A189	Compression Spring
43	ME9A14	Ball
44	FAR25-11A	Paddle
45	ME2C82	Spiral Pin
46	78900	Housing Cover
47	PT100-13	Muffler
48	PT100-2	Exhaust Washer
49	ME6F7	Inlet Bushing

Not Shown: YA905 Boot

**PARTS LIST FOR SRW07-38 & SRW07-50 SIOUX RATCHETS
SERIAL "A"**



*Order Quantity As Required
FURNISH CATALOG, SERIAL,
AND MODEL NUMBER WHEN
ORDERING PARTS

Fig. No.	Part No.	Description	Fig. No.	Part No.	Description
1	FAR7200-11	Clamp Nut	29	ME7B76	O-Ring
2	FAR72B-8B	Ratchet Head Finished	30	FAR72-501A	Rotor
3	FAR7200-7	Bar Element	31	ME1A203	Spring (4)*
4	FAR7200-5	Drive Shaft	32	FAR72B-204	Vane (4)*
5	ME1G17	Disc Spring FAR7200 (2)*	33	PD3C221A	Cylinder Liner
6	FAR7200-41	Grooved Washer	34	ME2C45	Pin
7	ME2D173	Grooved Pin	35	FAR72-211	Rear End Plate
8	FAR7200-9	Wear Bushing	36	ME11A27	Ball Bearing
9	ME2A108B	Pawl Pin (2)*	37	PD3C203	Plug
10	FAR7200-301	Drive Body (3/8" Model)	38	FAR72C33	Muffler Material
	BP92122	Drive Body (1/2" Model)	39	74928	Muffler
11	ESD16	Coil Spring (3/8" Model)	40	ME7B23J	O-Ring
	ME1A28	Coil Spring (1/2" Model)	41	IM5100-20A	Trigger Valve Seat
12	ESD854	Steel Ball (3/8" Model)	42	FAR72C200	Trigger Stem
	ESD855	Steel Ball (1/2" Model)	43	IM5100-22A	Trigger Valve
13	ME2A133	Stop Pin-Pawl (2)*	44	ME1A226	Tipper Spring
14	FAR72C302	Pawl PM (2)*	45	74926	Housing
15	FAR72A-307A	Selector Knob	46	74924	Warning Label
16	ME1A168C	Compression Spring (2)*	47	74927-38	ID Label (3/8" Model)
17	FAR72A306A	Plunger (2)*		74927-50	ID Label (1/2" Model)
18	ESD16	Spring	48	09954	Rivet (8)*
19	ESD854	Steel Ball 3/16"	49	ME6F1A	Inlet Adaptor Bushing
20	ESD1333	Grease Zerk			
21	FAR72C2DEM	Ratchet Head Housing			
22	ME11B14	Needle Bearing (2)*			
23	FAR7200-3A	Internal Gear			
24	FAR72-4A	MIM Gear Carrier			
25	ME2A107	Gear Pin (3)*			
26	FAR72-6	Planetary Gear (3)*			
27	ME11A46	Ball Bearing			
28	FAR72-505A	End Plate			
			Not Shown:		
				YA889A	Boot For Ratchet Head



⚠ WARNING



Some dust created by power sanding, sawing, grinding, drilling, and other construction activities contains chemicals known to cause cancer, birth defects or other reproductive harm.

⚠ WARNUNG



Der durch Elektrosanden, -sägen, -schleifen und -bohren sowie durch andere Bauarbeiten anfallende Staub enthält Chemikalien, die nachweislich Krebs sowie Geburts- bzw. andere Fortpflanzungsschäden hervorrufen.

⚠ ADVERTENCIA



El polvo generado al lijar, aserrar, afilar, taladrar y realizar otras tareas de construcción contiene compuestos químicos que podrían provocar cáncer, malformaciones congénitas y otras alteraciones del aparato reproductor.

⚠ ATTENZIONE



La polvere generata da carteggiatura, segatura, smerigliatura, trapanatura con attrezzi elettrici e simili attività può contenere sostanze chimiche che causano cancro, difetti congeniti o altri danni all'apparato riproduttivo.

⚠ AVERTISSEMENT



Les poussières produites par les travaux de ponçage, sciage, meulage, perçage et autres activités du bâtiment contiennent des substances chimiques aux propriétés réputées pour provoquer le cancer, des malformations de naissance et d'autres nuisances à l'égard des fonctions de la reproduction.

⚠ OPGEPAST



Tijdens het zandstralen, zagen, slijpen, boren en bij andere bouwactiviteiten komen er scheikundige stoffen vrij die kankerverwekkend zijn en die bij pasgeborenen misvormingen veroorzaken of die andere vruchtbaarheidsstoornissen kunnen veroorzaken.

⚠ VARNING



Somligt damm som skapas vid användning av verktyg för sandning, sågning, slipning, borrarning samt andra aktiviteter innehåller kemikalier som är kända för att orsaka cancer, fosterskador och andra skador vid fortplantning.



Snap-on Power Tools, Inc.

Z812_where_used

SRW03S-25

SRW03S-25-RP

SRW03S-38

SRW03S-38-RP

SRW07-38

SRW07-50

0.3 HP 1/4 SIOUX RATCHET

1/4" RATCHET PROMO

0.3 HP 3/8 SIOUX RATCHET

3/8" RATCHET PROMO

SIOUX 3/8" AIR RATCHET

SIOUX 1/2" AIR RATCHET