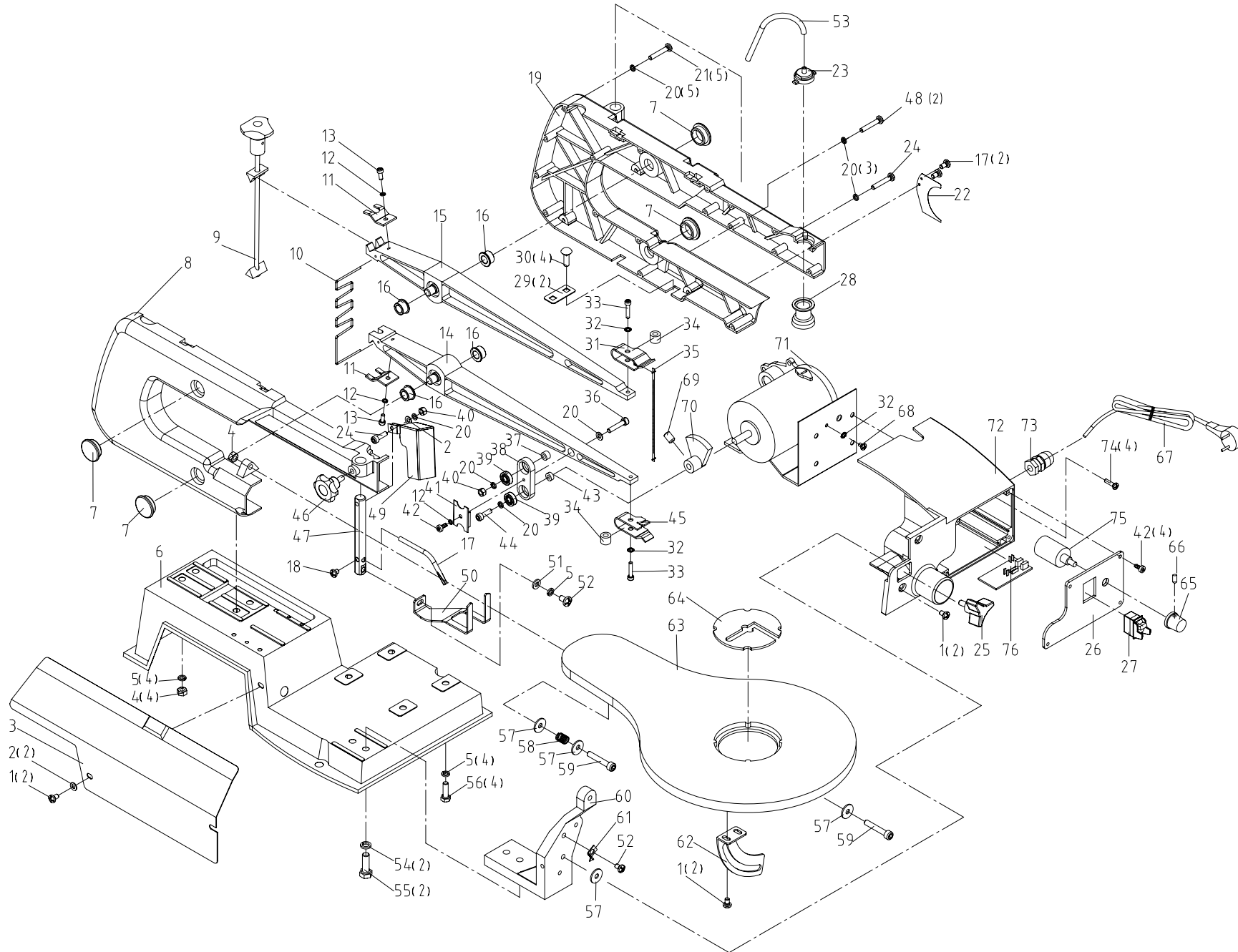


RK7315

Version:00
Date:090403



Ref #	Part #	Description	Qty
1	60019434	Screw	6
2	60019435	Washer	6
3	60019436	Side Cover	1
4	60019437	Nut	5
5	60019438	Washer	9
6	60019439	Base	1
7	60019440	Cord Protector	4
8	60019441	Left Bracket	1
9	60019442	Locking Bolt Assembly	1
10	60019443	Spring	1
11	60019444	Clamp	2
12	60019445	Washer	3
13	60019446	Screw	2
14	60019447	Upper Saw Blade Arm	1
15	60019448	Downside Saw Blade Arm	1
16	60019449	Bearing	4
17	60019450	Dust Blowing Tube	1
18	60019451	Screw	1
19	60019452	Right Bracket	1
20	60019453	Washer	11
21	60019454	Screw	5
22	60019455	Protector Board	1
23	60019456	Gasbag Cover	1
24	60019457	Screw	2
25	60019458	Locking Lever	1
26	60019459	Switch Box Cover	1
27	60019460	Switch	1
28	60019461	Gasbag	1
29	60019462	Fixed Piece	2
30	60019463	Screw	4
31	60019464	Upper Blade Bracket	1
32	60019465	Washer	2
33	60019466	Screw	2
34	60019467	Washer	2
35	60019468	Blade	1
36	60019469	Screw	1
37	60019470	Washer	1
38	60019471	Bearing Adaptor	1
39	60019472	Bearing	2
40	60019473	Nut	2
41	60019474	Clamp	1
42	60019475	Screw	5
43	60019476	Washer	1

Ref #	Part #	Description	Qty
44	60019477	Screw	1
45	60019478	Lower Blade Bracket	1
46	60019479	Locking Lever Handle	1
47	60019480	Locking Lever	1
48	60019481	Screw	2
49	60019482	Blade Protector	1
50	60019483	Protector Bracket	1
51	60019484	Washer	1
52	60019485	Screw	2
53	60019486	Soft Pipe	1
54	60019487	Washer	2
55	60019488	Screw	2
56	60019489	Screw	4
57	60019490	Washer	4
58	60019491	Spring	1
59	60019492	Screw	2
60	60019493	Table Bracket	1
61	60019494	Finger	1
62	60019495	Angle Scale	1
63	60019496	Table	1
64	60019497	Table Cover	1
65	60019498	Adjusting Lever	1
66	60019499	Screw	1
67	60019500	Power Cord	1
68	60019501	Screw	2
69	60019502	Screw	1
70	60019503	Eccentric Wheel	1
71	60019504	Motor	1
72	60019505	Switch Box	1
73	60019506	Cord Clamp	1
74	60019507	Screw	4
75	60019508	Speed Adjustor	1
76	60019509	Pcb	1