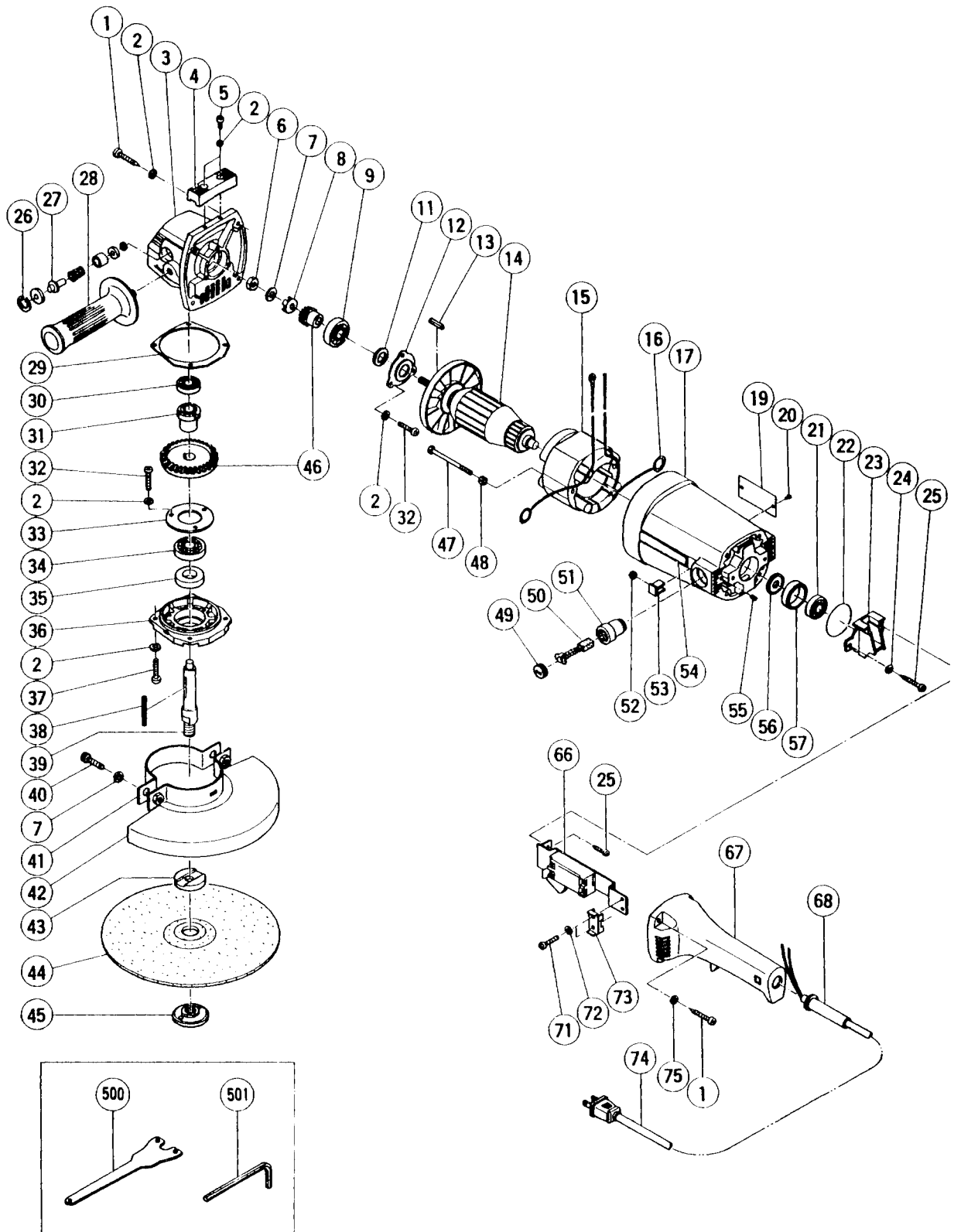


ELECTRIC TOOL PARTS LIST

DISC GRINDER
Model PDL-180A

1992 · 1 · 16
(E4)



PARTS

PDL - 180A

ITEM NO.	CODE NO.	DESCRIPTION	NO. USED	REMARKS
1	937-807	TAPPING SCREW D5X25	8	
2	949-454	SPRING WASHER M5 (10 PCS.)	16	
3	981-880Z	GEAR COVER ASS'Y	1	INCLUD.4,5,26,27
4	981-881Z	TOOL REST	1	
5	949-237	MACHINE SCREW M5X12 (10 PCS.)	2	
6	949-568	LOCK NUT M8 (10 PCS.)	1	
7	949-457	SPRING WASHER M8 (10 PCS.)	3	
8	937-988	PAWL WASHER	1	
9	630-1VV	BALL BEARING 6301VVCMP2S	1	
11	938-853	FELT PACKING (A)	1	
12	937-896	BEARING COVER (A)	1	
13	940-533	FEATHER KEY 3X3X10	1	
14	937-945U	ARMATURE ASS'Y 110V - 120V	1	INCLUD.9,21,58
* 15	981-882D	STATOR ASS'Y 110V - 127V	1	INCLUD.16 FOR USA
* 15	981-882C	STATOR ASS'Y 110V - 127V	1	INCLUD.16 FOR CAN
16	958-032	BRUSH TERMINAL	2	
17	937-890Z	HOUSING ASS'Y	1	INCLUD.51,55
19		NAME PLATE	1	
20	949-510	RIVET D2.5X4.8 (10 PCS.)	2	
21	620-0VV	BALL BEARING 6200VVCMP2S	1	
22	937-946	BEARING SEAL	1	
23	937-905	BEARING COVER	1	
24	949-423	WASHER M4 (10 PCS.)	1	
25	954-004	TAPPING SCREW D4X16	3	
26	948-011	RETAINING RING FOR D16 HOLE	1	
27	938-094	LOCK PIN	1	
28	937-981Z	SIDE HANDLE FOR M14	1	
29	937-901	SEAL PACKING (B)	1	
30	620-0VV	BALL BEARING 6200VVCMP2S	1	
31	938-096	SLEEVE	1	
32	949-236	MACHINE SCREW M5X10 (10 PCS.)	6	
33	937-035	BEARING COVER (B)	1	
34	630-2VV	BALL BEARING 6302VVCMP2S	1	
35	938-099	FELT PACKING (B)	1	
36	937-902	PACKING GLAND	1	
37	949-239	MACHINE SCREW M5X16 (10 PCS.)	4	
38	948-920	FEATHER KEY 4X4X30	1	
39	938-102P	SPINDLE 5/8"	1	
40	949-656	HEX. SOCKET HD. BOLT M8X20 (10 PCS.)	2	
41	937-811	SET RING (A)	1	
* 42	937-960Z	WHEEL GUARD	1	FOR USA
* 42	937-934Z	WHEEL GUARD	1	FOR CAN
43	937-922P	WHEEL WASHER (B) FOR D5/8" HOLE	1	
44	937-933Z	D. C. WHEELS 180MM A24R (10 PCS.)	1	
45	937-923P	WHEEL NUT 5/8" - 11UNC	1	
46	937-897	GEAR	1	
47	937-925	BOLT (+HD.) M5X80	2	
48	956-784	SPECIAL WASHER	2	
49	940-540	BRUSH CAP	2	
* 50	999-044	CARBON BRUSH (1 PAIR)	2	
* 50	937-943Z	CARBON BRUSH (AUTO STOP TYPE) (1 PAIR)	2	

*: ALTERNATIVE PARTS

STANDARD ACCESSORIES

PDL - 180A

ITEM NO.	CODE NO.	DESCRIPTION	NO. USED	REMARKS
500	937-913Z	WRENCH	1	
501	872-422	HEX. BAR WRENCH 6MM	1	

OPTIONAL ACCESSORIES

ITEM NO.	CODE NO.	DESCRIPTION	NO. USED	REMARKS
801	937-915	THRUST WASHER (B)	2	
802	953-256Z	SANDING DISC SET	1	
803	939-574	SANDING DISCS 180MM CC18 (10 PCS.)	1	
804	939-041	SANDING DISCS 180MM CC20 (10 PCS.)	1	
805	939-042	SANDING DISCS 180MM CC24 (10 PCS.)	1	
806	939-043	SANDING DISCS 180MM CC30 (10 PCS.)	1	
807	939-044	SANDING DISCS 180MM CC38 (10 PCS.)	1	
808	939-045	SANDING DISCS 180MM CC40 (10 PCS.)	1	
809	939-047	SANDING DISCS 180MM CC50 (10 PCS.)	1	
810	939-048	SANDING DISCS 180MM CC60 (10 PCS.)	1	
811	939-049	SANDING DISCS 180MM CC80 (10 PCS.)	1	
812	939-050	SANDING DISCS 180MM CC100 (10 PCS.)	1	
813	939-051	SANDING DISCS 180MM CC120 (10 PCS.)	1	
814	939-180	SANDING DISCS 180MM AA18 (10 PCS.)	1	
815	939-187	SANDING DISCS 180MM AA80 (10 PCS.)	1	
816	939-188	SANDING DISCS 180MM AA80 (10 PCS.)	1	
817	939-189	SANDING DISCS 180MM AA100 (10 PCS.)	1	
818	939-190	SANDING DISCS 180MM AA120 (10 PCS.)	1	
819	953-255	RUBBER PAD FOR D16 HOLE	1	
820	953-254P	WASHER NUT 5/8" - 11UNC	1	
* 821	994-312	WHEEL WASHER (C) FOR D20 HOLE	1	FOR USA
* 822	994-313	WHEEL WASHER (C) FOR D22 HOLE	1	FOR USA

* : ALTERNATIVE PARTS