



PC1010N

# Electric Air Compressor

## Operating Instructions



# SENCO®

Senco Brands, Inc.  
8450 Broadwell Road  
Cincinnati, OH 45244  
1-800-543-4596  
[www.senco.com](http://www.senco.com)



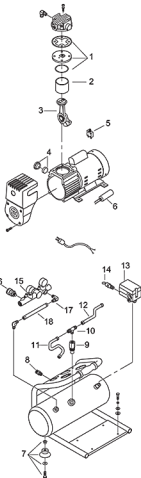
Warnings for the safe use of this tool are included in this manual.

Revision 5/31/13

© 2013 by Senco Brands, Inc.

## 1/2 HP Electric Air Compressor

### Parts Reference Guide



Ref. No.	Part No.	Description
1	3B11DC02A	Exhaust Valve Assembly
2	3201068	Cylinder
3	3B34DC02	Rod Assembly
4	2140026	Air Filter Set
5	2E2505A	Circuit Breaker
6	2E27010F2525	Running Capacitor
7	3433011A	Rubber Pad Set
8	2405012	Drain Valve
9	2414033A	Check Valve
10	2N0902H01T02H4	Unloading 3-way Pipe
11	3B202120F	Unloading Tube A
12	3B202190N	Unloading Tube B
13	3Y30W5002	Pressure Switch Set
14	2406016A	Pressure Relief Valve
15	3Y30W5003	Regulator Set
16	PC0901	Quick Coupler
17	2N0602T02H5	Exhaust Elbow
18	3B202150N	Unloading Tube C