

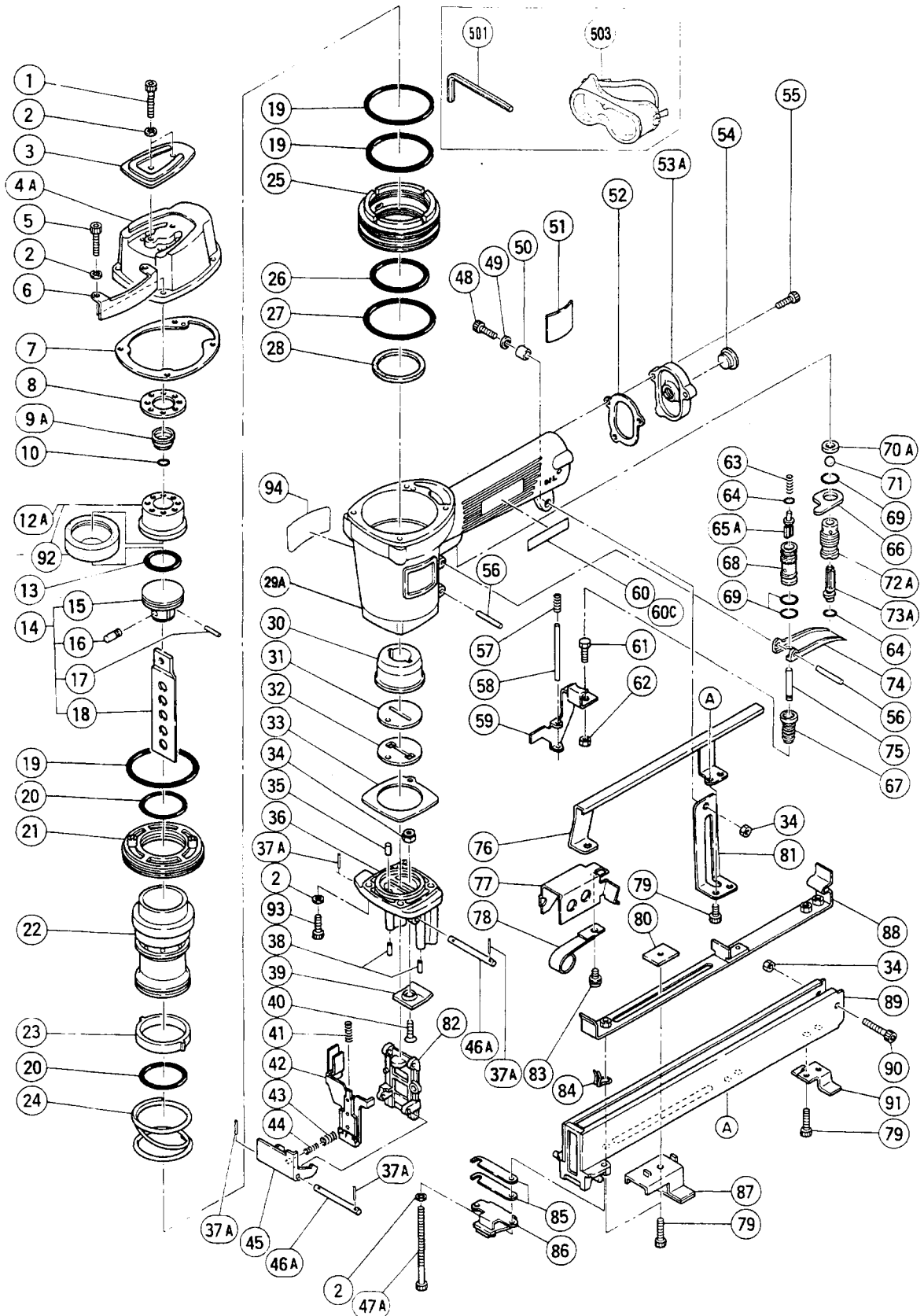
PNEUMATIC TOOL PARTS LIST

■ STAPLER

1997 · 1 · 30

Model N 3824A WIDE CROWN

(E5)



PARTS

N 3824A

ITEM NO.	CODE NO.	DESCRIPTION	NO. USED	REMARKS
1	949-662	HEX. SOCKET HD. BOLT M5X25 (10 PCS.)	2	
2	949-454	SPRING WASHER M5 (10 PCS.)	10	
3	878-221	TOP COVER (A)	1	
4A	877-917	EXHAUST COVER	1	
5	949-757	HEX. SOCKET HD. BOLT M5X20 (10 PCS.)	4	
6	878-154	BODY GUARD	2	
7	876-176	GASKET (B)	1	
8	876-178	GASKET (C)	1	
9A	878-417	EXHAUST VALVE	1	
10	872-821	VALVE O - RING	1	TILL 12.1987
12A	877-129	HEAD CAP ASS'Y	1	INCLUD.92
13	876-174	PISTON O - RING	1	
14	878-204	PISTON ASS'Y	1	INCLUD.15 - 18
15	878-023	PISTON	1	
16	876-255	BIT PIN	1	
17	949-861	ROLL PIN D2X12 (10 PCS.)	1	
18	878-205	DRIVER BLADE	1	
19	876-161	O - RING (S - 65)	3	
20	877-126	CYLINDER O - RING (D)	2	
21	876-168	CYLINDER PLATE	1	
22	878-203	CYLINDER	1	
23	876-167	CYLINDER RING	1	
24	876-172	CYLINDER SPRING	1	
25	877-122	CYLINDER GUIDE	1	
26	877-124	CYLINDER O - RING (B)	1	
27	877-123	CYLINDER O - RING (A)	1	
28	878-202	CYLINDER BUMPER	1	
29A	878-201	BODY	1	
30	878-206	PISTON BUMPER	1	
31	878-191	BUMPER SHEET	1	
32	878-190	BUMPER SHEET	1	
33	876-673	GASKET (A)	1	
34	877-371	NYLON NUT M5	3	
35	962-980	PIN (B) D4X8	1	
36	878-192	NOSE ASS'Y	1	INCLUD.34,35,38 - 40
37A	878-222	ROLL PIN D1.6X12	4	
38	949-869	ROLL PIN D4X10 (10 PCS.)	2	
39	878-216	GUIDE PIECE	1	
40	949-334	FLAT HD. SCREW M5X16 (10 PCS.)	1	
41	877-081Z	SPRING	1	
42	878-195	PUSHING LEVER	1	
43	877-867	LEVER SPRING	1	
44	878-220	LEVER SPRING (B)	1	
45	878-196	LOCK LEVER	1	
46A	878-197	HINGE PIN ASS'Y	2	INCLUD.37A
47A	878-225	NYLOCK HEX. SOCKET HD. BOLT M5X85	2	
48	949-658	HEX. SOCKET HD. BOLT M5X18 (10 PCS.)	1	
49	876-205	WASHER	1	
50	878-218	SLEEVE	1	
51		NAME PLATE	1	
52	877-131	GASKET (D)	1	

*: ALTERNATIVE PARTS

PARTS

N 3824A

ITEM NO.	CODE NO.	DESCRIPTION	NO. USED	REMARKS
53A	880-036	CAP	1	
54	872-035	DUST CAP	1	
55	949-821	HEX. SOCKET HD. BOLT M5X16 (10 PCS.)	3	
56	949-866	ROLL PIN D3X30 (10 PCS.)	2	
57	877-871	SPRING (A)	1	
58	878-198	SPRING GUIDE	1	
59	878-193	PUSHING LEVER (A)	1	
60	950-565	HITACHI LABEL	1	TILL 7.1986
60C	878-182	HITACHI LABEL	1	SINCE 8.1986
61	875-650	SAFETY BOLT	1	
62	949-555	NUT M5 (10 PCS.)	1	
63	875-643	PLUNGER SPRING	1	
64	874-820	PLUNGER O - RING	2	
65A	878-155	PLUNGER (A)	1	
66	875-644	VALVE PLATE	1	
67	878-170	VALVE RUBBER COVER	1	
68	878-166	VALVE BUSHING	1	
69	875-638	O - RING (S - 12)	3	
70A	878-734	VALVE PACKING	1	
71	875-645	URETHANE BALL (C) D7.14	1	
72A	877-335	TRIGGER VALVE BUSHING	1	
73A	878-121	TRIGGER PLUNGER	1	
74	876-203	TRIGGER	1	
75	878-171	PLUNGER (B)	1	
76	878-210	MAGAZINE COVER	1	
77	878-208	STAPLE FEEDER	1	
78	877-876	RIBBON SPRING	1	
79	949-765	HEX. SOCKET HD. BOLT M5X12 (10 PCS.)	6	
80	878-213	PLATE NUT	1	
81	878-211	HANDLE ARM	1	
82	878-194	BIT GUIDE	1	
83	976-706	MACHINE SCREW (W/WASHERS) M5X10	1	
84	878-217	GUIDE	1	
85	878-199	ADJUSTING PLATE	2	
86	878-200	STOPPER	1	
87	878-212	SHINGLE GAUGE	1	
88	878-209	BOTTOM PLATE	1	
89	878-207	STAPLE GUIDE (A)	1	
90	949-664	HEX. SOCKET HD. BOLT M5X30 (10 PCS.)	1	
91	878-214	PROTECTOR	1	
92	877-942	HEAD CAP RUBBER	1	
93	878-224	NYLOCK HEX. SOCKET HD. BOLT M5X20	2	
94	878-184	WARNING LABEL	1	

*: ALTERNATIVE PARTS

