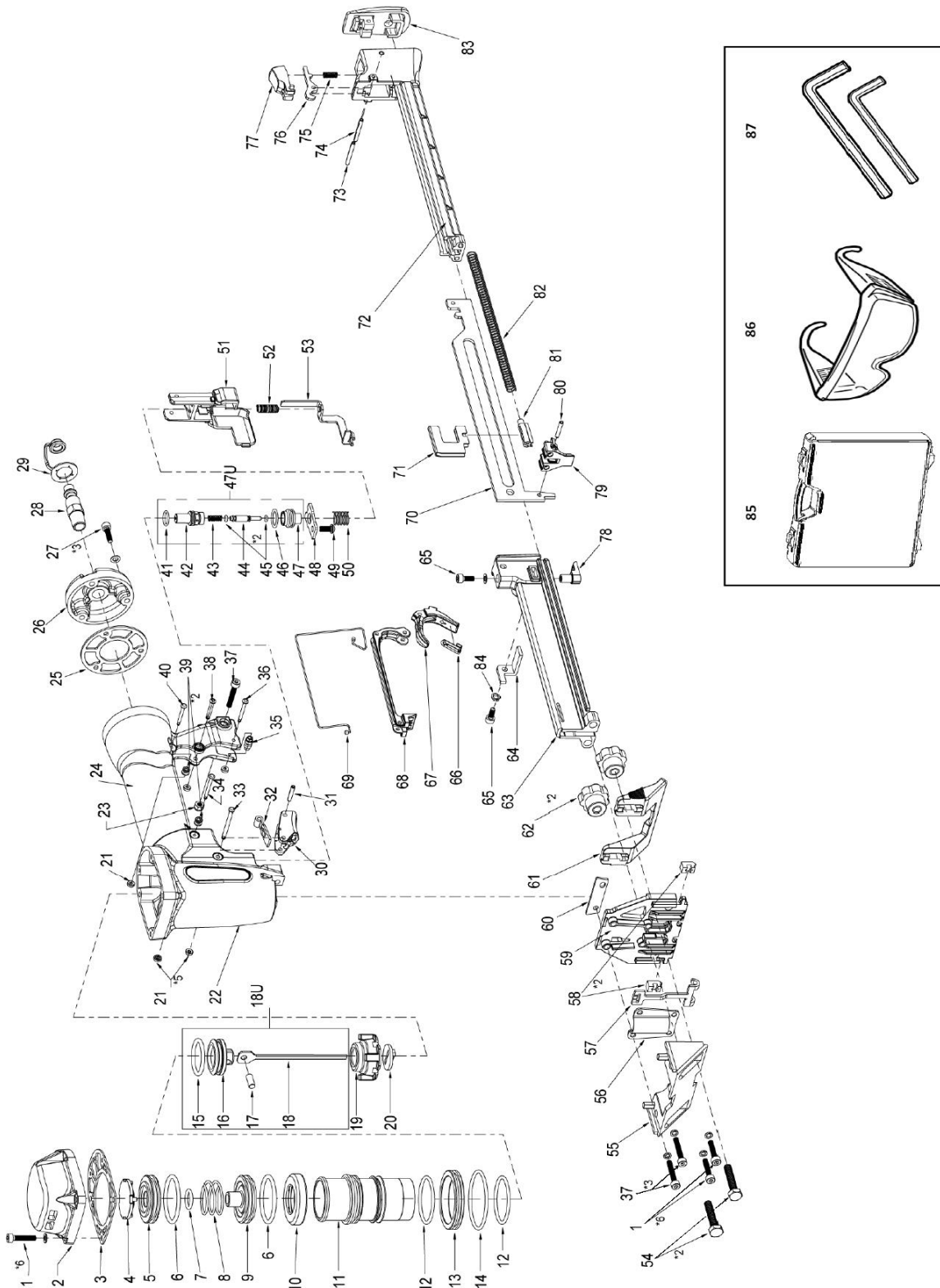


PNEUMATIC TOOL PARTS LIST

■ 1" Twin Trigger Flooring Stapler
Model N2503AF

2009 • 10 • 13
(E1)



PARTS

N2503AF

Item NO.	Code NO.	DESCRIPTION	NO USED	Remarks
1	330469	Screw, SHCS	6	
2	330470	Cap - Handle	1	
3	330471	Gasket, Cap	1	
4	330472	Top Seal	1	
5	330473	Poppet	1	
6	330474	O-Ring Head Valve	2	
7	330475	O-Ring Head Valve	1	
8	330476	Spring, Head Valve	1	
9	330477	Head Valve	1	
10	330478	Cylinder Top Seal	1	
11	330479	Cylinder	1	
12	330480	O-Ring	2	
13	330481	Cylinder Ring	1	
14	330482	O-Ring	1	
15	330483	O-Ring	1	
16	330484	Piston	1	
17	330485	Pin	1	
18	330486	Driver Blade	1	
18U	330487	Piston/Driver Blade Ass'y	1	(Includes Items 15-18)
19	330488	Bumper	1	
20	330489	Guide Driver	1	
21	330490	Pin Retainer	5	
22	330491	Body	1	
23	330492	Nut	1	
24	330493	Grip, Rubber	1	
25	330494	Gasket, Handle	1	
26	330495	Handle Cap	1	
27	330496	Screw, SHCS	3	
28	190001	Air Plug	1	
29	330498	Plug Cap	1	
30	330499	Trigger	1	
31	330500	Spring Pin	1	
32	330501	Trigger Plate	1	
33	330502	Pin, Trigger	1	
34	330503	Pin	1	
35	330504	Roller	1	
36	330505	Pin	1	
37	330506	Screw, SHCS	3	
38	330507	Pin	1	
39	330508	Roller	2	
40	330509	Pin	1	
41	330510	O-Ring	1	
42	330511	Trigger Valve Plunger	1	
43	330512	Spring, Trigger Valve	1	
44	330513	Trigger Valve Stem	1	
45	330514	O-Ring	2	
46	330515	O-Ring	1	
47	330516	Trigger Valve Housing	1	
47U	330517	Trigger Valve Unit	1	(Includes Items 41-47)
48	330518	Hold Plate	1	
49	330519	Screw	1	
50	330520	Spring	1	
51	330521	Arm Guide	1	
52	330522	Spring	1	
53	330523	Safety Arm B	1	
54	330524	Screw, HHCS	2	
55	330525	Front Guide	1	
56	330526	Arm Cover	1	
57	330527	Safety Arm A	1	
58	330528	Insert, Nose	2	

