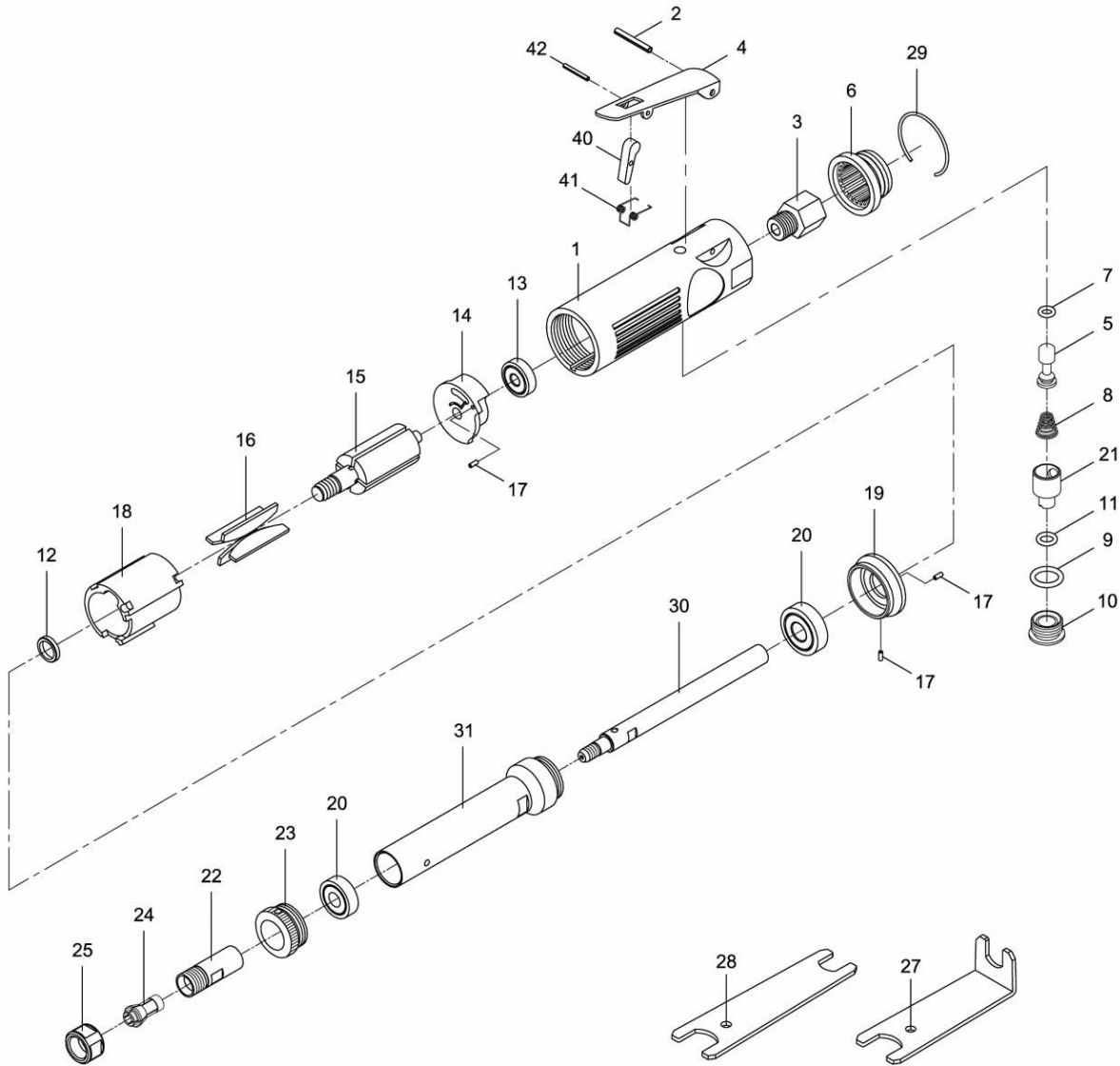




JSM-512F 1/4-inch Extended Die Grinder

(parts list on reverse side)



WMH TOOL GROUP

2420 Vantage Drive
Elgin, Illinois 60124
Ph.: 800-274-6848
www.wmhtoolgroup.com

Part No. M-JSM-512F
Revision B 1/07
Copyright © WMH Tool Group

Parts List for JSM-512F Extended Die Grinder

Index No.	Part No.	Description	Size	Qty
1	51201	Motor Housing		1
2	SM-30102	Spring Pin	Ø3 x 24L mm	1
3	51203	Air Inlet		1
4	51504	Throttle Lever		1
5	51205	Valve Shaft		1
6	51206	Exhaust Diffuser		1
7	70107	O-Ring	Ø4.8 x 1.9 mm	1
8	51208	Valve Spring		1
9	70123	O-Ring	Ø11.8 x 2.4 mm	1
10	51210	Throttle Valve Plug		1
11	40305	O-Ring	Ø6.5 x 2 mm	1
12	51212	Rotor Spacer		1
13	BB-626ZZ	Ball Bearing	626ZZ	1
14	51214	Rear End Plate		1
15	51215	Rotor		1
16	51216	Rotor Blade		4
17	70117	Spring Pin	Ø2 x 5L mm	3
18	70118	Cylinder		1
19	51219	Front End Plate		1
20	BB-6000ZZ	Ball Bearing	6000ZZ	2
21	51221	Air Regulator		1
22	51222	Spindle		1
23	51223F	Lock Nut		1
24	51224	Collet	1/4"	1
25	51225	Collet Nut		1
27	51227	Angle Double Ended Spanner		1
28	51228	Double Ended Spanner		1
29	51229	Retainer Ring		1
30	51230F	Extension Bar		1
31	51231F	Extension Housing		1
40	51540	Lever Bar		1
41	51541	Spring		1
42	51542	Spring Pin	Ø2 x 18L mm	1
	RPK-512F	Repair Kit (Contains Index # 7, 8, 9, 11, 16, 29)		
	RBK-512F	Rebuild Kit (Contains Index # 24, 25)		