

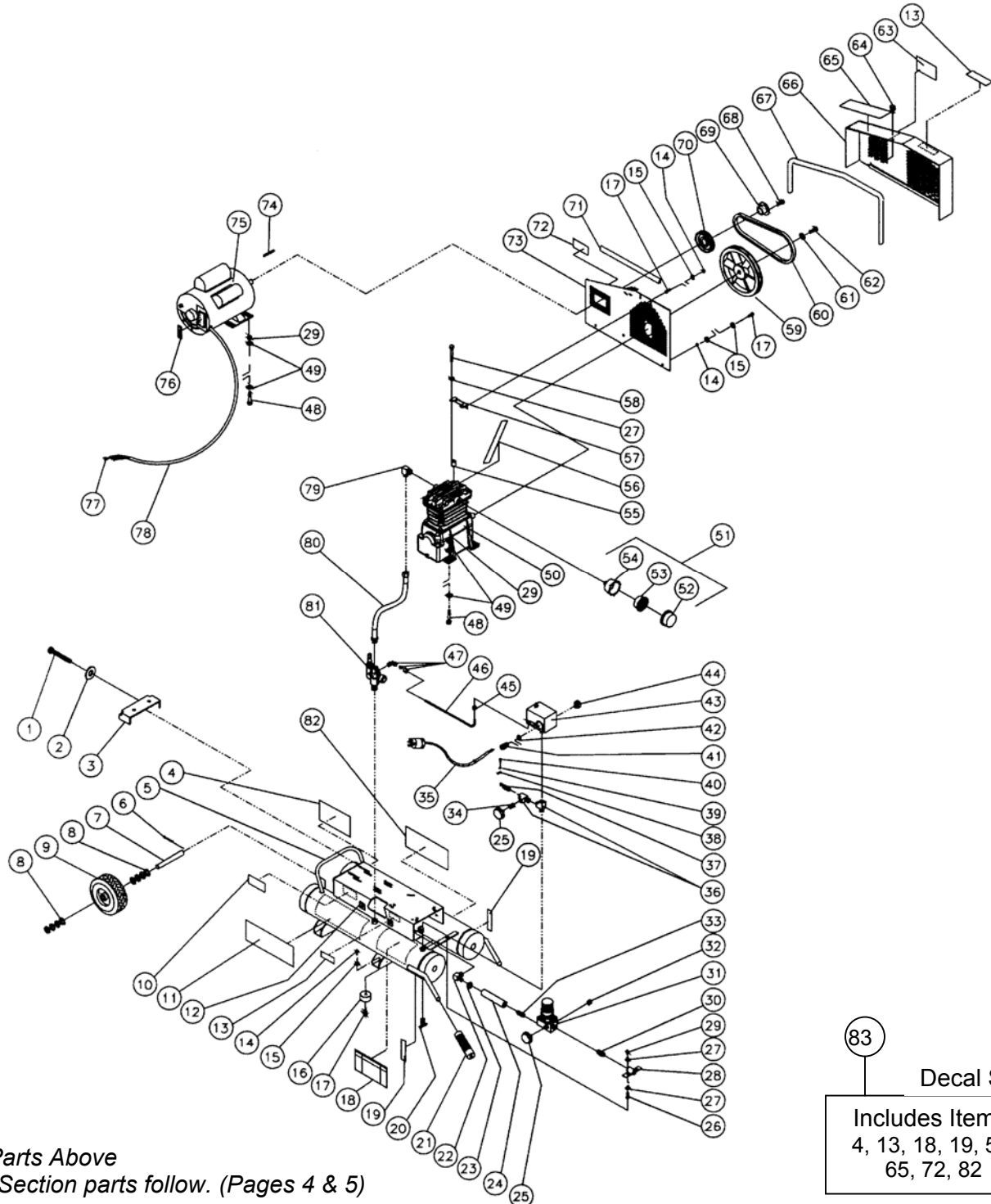
HITACHI

ELECTRIC COMPRESSOR PARTS LIST

ELECTRIC COMPRESSOR
Model EC 25G & EC189

2003 • 02 • 21
(E1)

Breakdowns and Owners Manuals are also available on our Web Site WWW.HITACHIPOWERTOOLS.COM



PARTS

EC25G & EC189

ITEM #	CODE #	DESCRIPTION	NO USED	Remarks
1	724086	Bolt	1	
2	724079	Washer	1	
3	724080	Belt Tensioner Plate	1	
4		Decal- Maint. Instructions (Included w/ Item 83 Only)	1	
5	724006	Air Tank Assembly	1	
6	724004	Cotter Pin	2	
7	724003	Axle	1	
8	724001	Washer	10	
9	724005	Wheel	1	
10	N/A	Decal- Date Plate	1	
11	724008	Decal- Hitachi	1	
12	724087	Wire Clips	2	
13		Decal-Warning, Hot Surface (Included w/ Item 83 Only)	1	
14	724010	Locknut	9	
15	724011	Washer	12	
16	724012	Isolator	4	
17	724013	Bolt	9	
18	N/A	Decal-Danger/Warning/Caution (French Only)	1	
19		Decal-Drain Tank (Included w/ Item 83 Only)	2	
20	724016	Drain Valve	2	
21	724017	Handle Grips	2	
22	724018	Elbow	1	
23	724019	Hose Clamp	2	
24	724020	Hose (One Foot Required)	1	
25	724088	Pressure Gage	2	
26	724021	Bolt	2	
27	724022	Washer	6	
28	724023	Regulator Mounting Bracket	1	
29	724024	Locknut	10	
30	724064	Nipple	1	
31	724065	Adjustable Regulator- 150 PSI	1	
32		Regulator Plug (Included w/ Item # 31 Only)	1	
33	724067	Hose Barb	1	
34	724036	Adapter	1	
35	724089	Plug-Cord Set	1	
36	724070	Street Tee	2	
37	724037	Safety Relief Valve	1	
38	724090	Terminal	3	
39	724091	Lock washer	3	
40	724092	Screw	1	
41	724093	Cord Strain Relief	1	
42	724094	Locknut	1	

2003-02-21

PARTS

EC25G & EC189

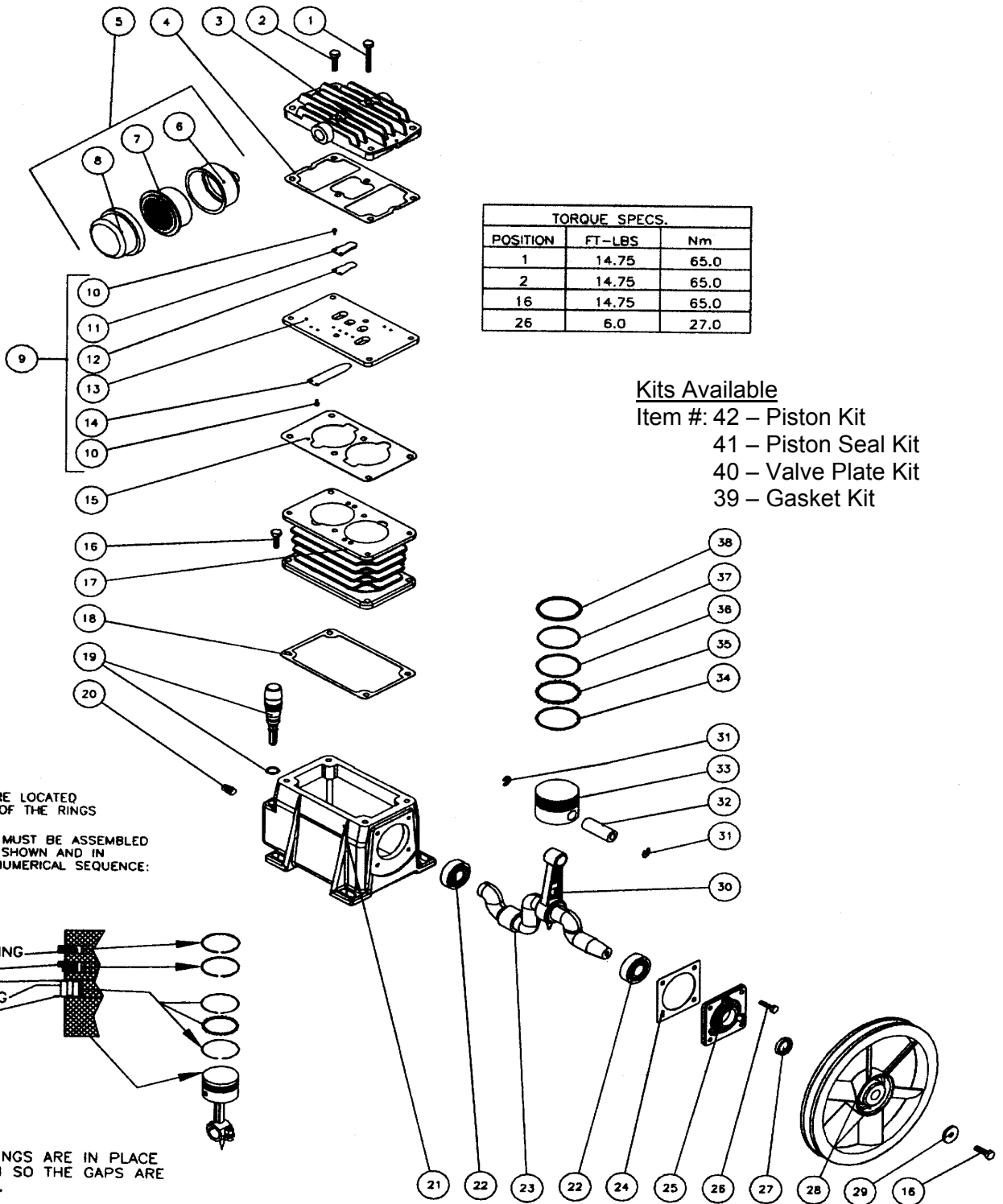
ITEM #	CODE #	DESCRIPTION	QTY	Remarks
43	724095	Pressure Switch	1	
44	724096	Cord Relief	1	
45	724057	Compression Nut	1	
46	724038	Copper Tube *(Two Feet Required)	1	
47	724039	Fitting	1	
48	724040	Bolt	8	
49	724041	Washer	16	
50	724046	Pump	1	
51	724042	Air Filter Assembly (Includes Items 52-54)	1	
52	724108	Filter Housing	1	
53	724044	Filter Element	1	
54		Rear Filter Housing (Included w/ Item 51 Only)	1	
55	724047	Spacer	2	
56		Decal- Check Oil lope (Included w/ Item 83 Only)	1	
57	724097	Belt Guard Bracket	1	
58	724098	Screw	2	
59	724049	Flywheel	1	
60	724050	Drive Belt	1	
61	N/A	Flat Washer Flywheel	1	
62	724021	Bolt	1	
63	724055	Decal- Hitachi	1	
64	724056	Fastener	1	
65		Decal- Operating Instructions (Included w/ Item 83 Only)	1	
66	724084	Belt guard Cover (Includes Items 64, 67)	1	
67	724063	Edging (Four Feet Required)	1	
68	724013	Bolt w/Bushing	2	
69	724099	Bushing	1	
70	724100	Drive Pulley	1	
71	724058	Edging (Two Feet Required)	1	
72		Decal- Warning (Included w/ Item 83 Only)	1	
73	724062	Belt guard Back (Includes Item 71)	1	
74	724068	Key	1	
75	724146	Electric Motor	1	
76		Decal- 115 Volt	1	
77	724147	Electrical Terminal	6	
78	724148	Cord (Three Feet Required)	1	
79	724045	Elbow	1	
80	724151	Hose	1	
81	724149	Pilot Valve (Pilot, Filter & Un-loader Valve, all in one)	1	
82		Decal- Danger (English Only) (Included w/ Item 83 Only)	1	
83	724150	Safety Decal Kit (Inc. 4,13,18,19,56,65,72,82)	1	

Optional Accessories

ITEM #	CODE #	DESCRIPTION	Remarks

2003-02-21

Pump Section, EC25G & EC189



2003-02-22

Pump Section Parts

EC25G & EC189

Item #	Code #	DESCRIPTION	No Used	Remarks,
1	724101	Screw	2	
2	724040	Screw	4	
3	724103	Cylinder Head	1	
4		Head Gasket (See Item 39)	1	
5	724042	Air Filter Assembly (*) (Includes Items 6-8)	1	
6		Rear Filter Housing (*) (Included w/Item 5 Only)	1	
7	724044	Filter Element (*)	1	
8	724108	Filter Cap (*)	1	
9	724152	Valve Plate Assembly (Includes Items 10-14)	1	
10		Valve Screw (See Item 9)	8	
11		Valve Stop (See Item 9)	2	
12		Outlet Reed Valve (See Item 9)	2	
13		Valve Plate (Included w/Item 9 Only)	1	
14		Inlet Reed Valve (See Item 9)	2	
15		Cylinder Valve Plate Gasket (See Item 39)	1	
16	724021	Screw	5	
17	724117	Cylinder	1	
18		Cylinder / Crankcase Gasket (See Item 39)	1	
19	724119	Oil Dipstick w/ O-ring	1	
20	724120	Plug	1	
21	724121	Crankcase	1	
22	724122	Bear, Ball	2	
23	724123	Crankshaft	1	
24		Flange Gasket (See Item 39)	1	
25	724125	Flange	1	
26	724126	Screw	4	
27	724127	Shaft Oil Seal	1	
28	724049	Flywheel	1	
29		Washer w/ Crankshaft (Included w/ Item 23)	1	
30	724130	Connecting Rod	2	
31		Snap Ring (See Item 41)	4	
32		Wrist Pin (See Item 41)	2	
33		Piston (See Item 41)	2	
34		Bottom Rail (See Item 40)	2	
35		Expander Ring (See Item 40)	2	
36		Top Rail (See Item 40)	2	
37		Scraper Piston Ring (See Item 40)	2	
38		Taper Face Piston Ring (See Item 40)	2	
39	724139	Gasket Kit (Inc. 4. 15. 18. 24)		
40	724140	Valve Plate Kit (Includes items 10-12, 14)		
41	724141	Piston Seals Kit (Inc. 34-38)		
42	724142	Piston Kit (Inc. 31-33)		

(*) Indicates Not Supplied with Pump Ass'y 724046

2003-02-2