

# HITACHI

LIST NO. 0189

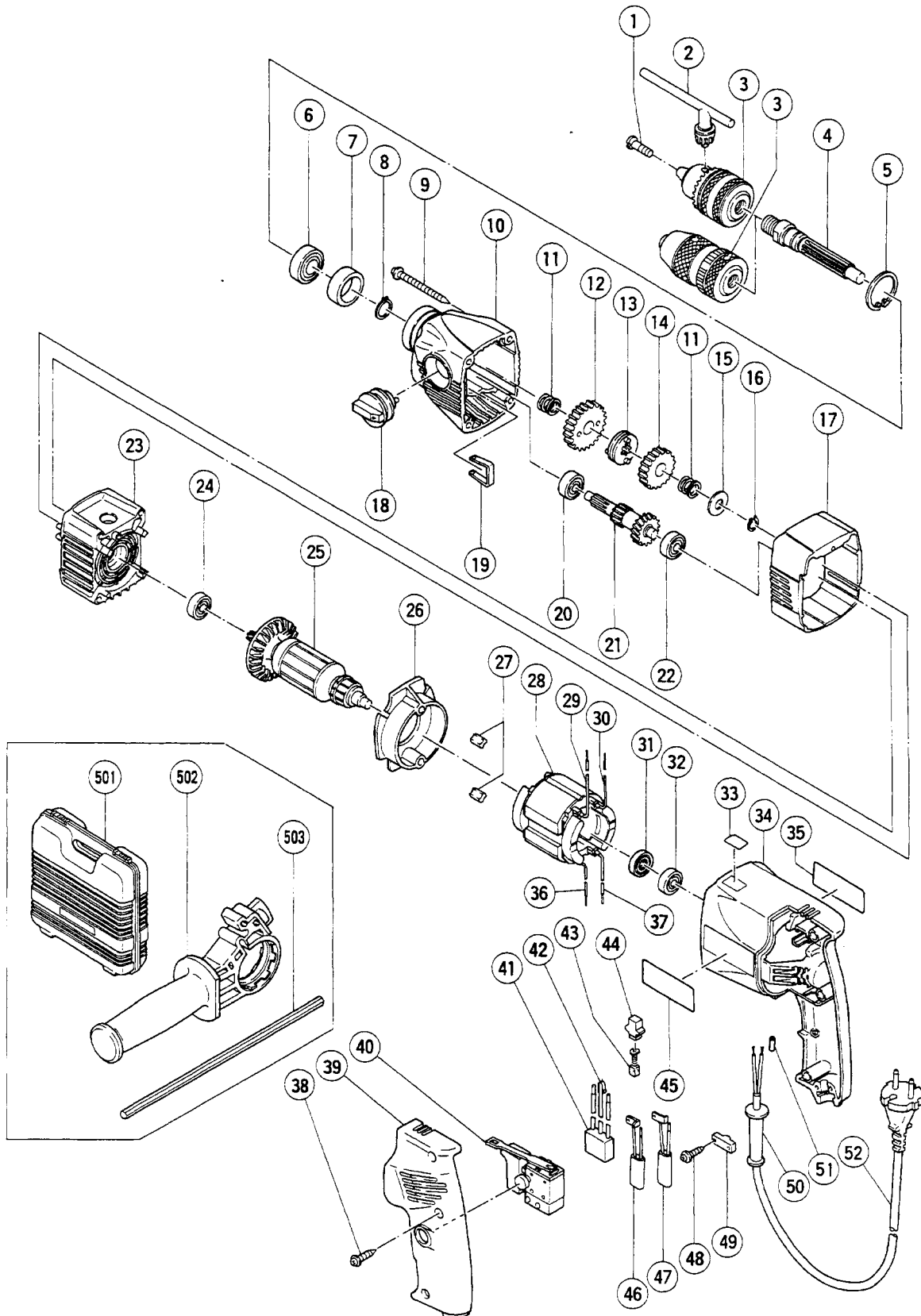
## ELECTRIC TOOL PARTS LIST

■ DRILL

1998·6·30

Model D 13VB2

(E1)



## PARTS

D 13VB2

ITEM NO.	CODE NO.	DESCRIPTION	NO. USED	REMARKS	
1	995-344	FLAT HD. SCREW (A) (LEFT HAND) M6X25	1		
2	930-515	CHUCK WRENCH 10G	1		
*	3	950-275	DRILL CHUCK 13VLR	1	INCLUD.2
*	3	316-280	DRILL CHUCK 13VLN (W/O CHUCK WRENCH)	1	
	4	316-308	SPINDLE	1	
	5	948-001	RETAINING RING FOR D32 HOLE	1	
	6	600-2DD	BALL BEARING 6002DDUCMPS2S	1	
	7	316-307	DISTANCE RING	1	
	8	939-544	RETAINING RING FOR D15 SHAFT (10 PCS.)	1	
	9	305-701	TAPPING SCREW (W/FLANGE) D5X60	4	
	10	316-272	GEAR COVER	1	
	11	994-389	SPRING	2	
	12	994-383	LOW SPEED GEAR	1	
	13	316-297	CLUTCH DISK	1	
	14	994-384	HIGH SPEED GEAR	1	
	15	981-077	WASHER	1	
	16	992-805	RETAINING RING FOR D9 SHAFT	1	
	17	316-306	OUTER COVER	1	
	18	316-276	SHIFT LEVER	1	
	19	994-396	SHIFT SPRING	1	
	20	627-VVM	BALL BEARING 627VVMC2EPS2S	1	
	21	316-278	SECOND PINION	1	
	22	608-VVM	BALL BEARING 608VVMC2EPS2L	1	
	23	316-305	INNER COVER ASS'Y	1	INCLUD.22,24
	24	608-DDM	BALL BEARING 608DDMC2EPS2S	1	
*	25	360-474U	ARMATURE ASS'Y 110V-115V	1	INCLUD.24,31,32
*	25	360-474E	ARMATURE 220V-230V	1	
	26	314-879	FAN GUIDE ASS'Y	1	INCLUD.27
	27	994-343	RUBBER BUSHING	2	
*	28	340-421C	STATOR 110V-115V	1	
*	28	340-421E	STATOR 220V-230V	1	
	29	314-914	INTERNAL WIRE (A) BLACK	1	
*	30	314-913	INTERNAL WIRE (A) GRAY	1	FOR GBR (110V),USA
	31	316-785	DUST SEAL	1	
	32	608-VVM	BALL BEARING 608VVMC2EPS2L	1	
	33		LABEL (CE MARK)	1	
	34	314-889	HOUSING	1	
	35		NAME PLATE	1	
	36	314-912	INTERNAL WIRE (A) RED	1	
*	37	314-915	INTERNAL WIRE (A) WHITE	1	FOR GBR (110V),USA
	38	301-653	TAPPING SCREW (W/FLANGE) D4X20 (BLACK)	3	
	39	314-891	HANDLE COVER	1	
*	40	314-916	SPEED CONTROL SWITCH (2P) 100V-115V	1	
*	40	314-921	SPEED CONTROL SWITCH (2P) 220V-240V	1	
	41	994-273	NOISE SUPPRESSOR	1	
	42	302-488	EARTH TERMINAL	1	
	43	999-041	CARBON BRUSH (1 PAIR)	2	
	44	955-203	BRUSH HOLDER	2	
	45		HITACHI LABEL	1	
*	46	314-922	CHOKE COIL (A) BLUE	1	
*	46	314-917	INTERNAL WIRE (B) BLUE	1	FOR USA

\* : ALTERNATIVE PARTS

6 - 98



