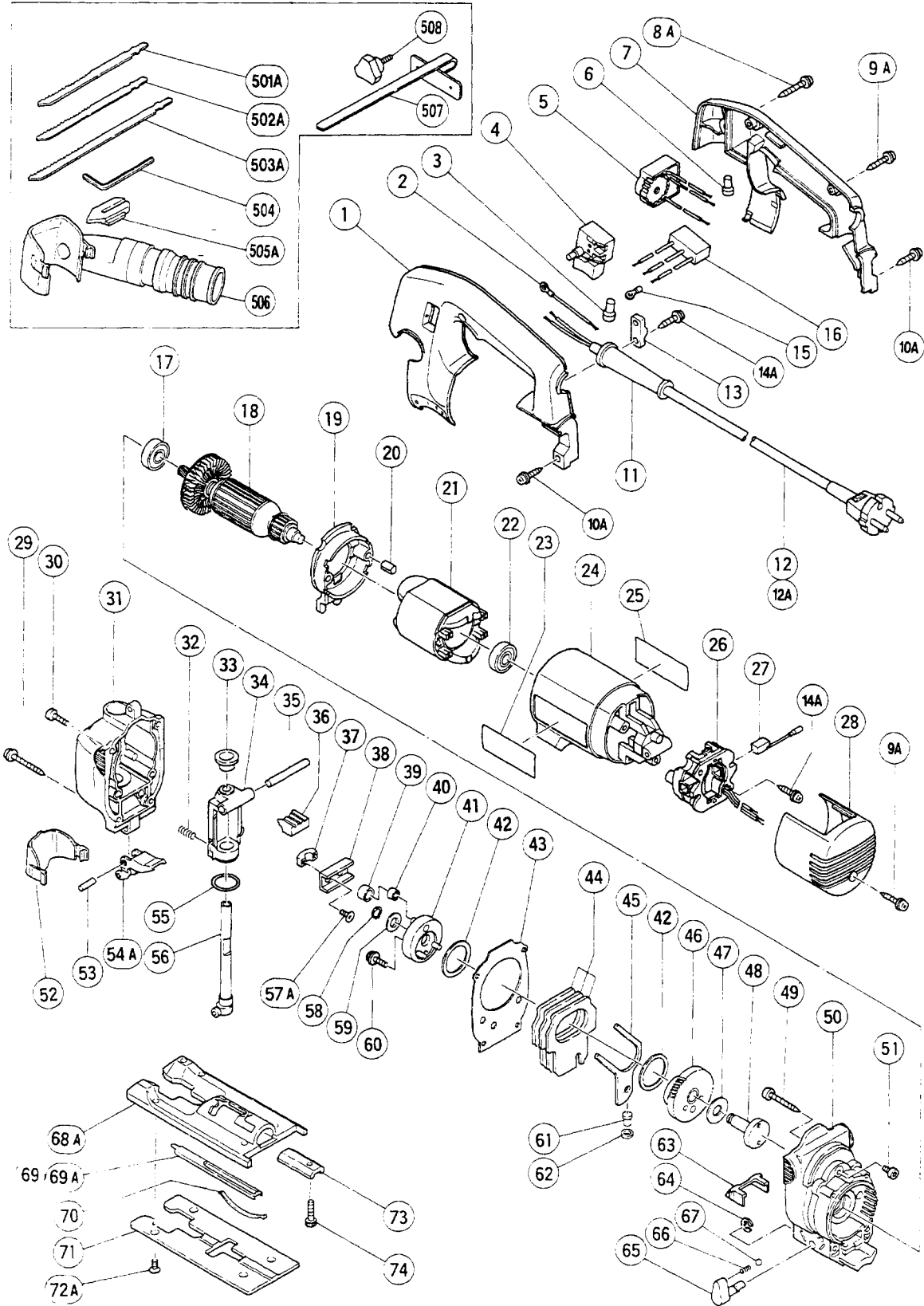


ELECTRIC TOOL PARTS LIST

■ JIG SAW
Model CJ 65V2

1997 · 5 · 30
(E3)



PARTS

CJ 65V2

ITEM NO.	CODE NO.	DESCRIPTION	NO. USED	REMARKS
1	305-800	HANDLE (A)	1	
2	305-783	INTERNAL WIRE	1	
3	959-141	CONNECTOR 50092 (10 PCS.)	1	
* 4	305-409	SWITCH (A) (1P PLUG IN TYPE) W/O LOCK	1	
* 4	305-791	SWITCH (C) (2P SCREW TYPE) W/LOCK	1	FOR NZL.AUS.GBR.SAF.ITA.FR.G.FRA.HOL.DEN FIN.SWE.AUT.NOR.USA.CAN
* 5	305-787	CONTROLLER CIRCUIT 100V - 115V	1	
* 5	305-788	CONTROLLER CIRCUIT 220V - 240V	1	
* 5	305-789	CONTROLLER CIRCUIT 220V - 240V	1	FOR NZL.GBR.SAF.ITA.FR.G.FRA.HOL.DEN.FIN SWE.AUT.NOR.SUI
* 5	305-790	CONTROLLER CIRCUIT 110V - 115V	1	FOR GBR.USA.CAN
6	959-140	CONNECTOR 50091 (10 PCS.)	2	
7	305-801	HANDLE (B)	1	
8A	307-028	TAPPING SCREW (W/FLANGE) D4X25 (BLACK)	1	
9A	301-653	TAPPING SCREW (W/FLANGE) D4X20 (BLACK)	3	
10A	305-812	TAPPING SCREW (W/FLANGE) D4X16 (BLACK)	2	
* 11	953-327	CORD ARMOR D8.8	1	
* 11	938-051	CORD ARMOR D10.1	1	
* 12	500-201Z	CORD	1	(CORD ARMOR D10.1)
* 12	500-409Z	CORD	1	(CORD ARMOR D8.8) FOR INA.ITA.FR.G.FRA.HOL. DEN.FIN.AUT.NOR
* 12	500-226Z	CORD	1	(CORD ARMOR D8.8) FOR NZL.AUS
* 12	500-247Z	CORD	1	(CORD ARMOR D10.1) FOR SWE
* 12	500-240Z	CORD	1	(CORD ARMOR D8.8) FOR USA.CAN
* 12	500-423Z	CORD	1	(CORD ARMOR D8.8) FOR SIN.KUW
* 12	500-231Z	CORD	1	(CORD ARMOR D8.8) FOR SAF
* 12	500-245Z	CORD	1	(CORD ARMOR D10.1) FOR SYR
* 12	500-395Z	CORD	1	(CORD ARMOR D8.8) FOR SUI
* 12A	500-436Z	CORD	1	(CORD ARMOR D8.8) FOR GBR
13	960-266	CORD CLIP	1	
14A	305-812	TAPPING SCREW (W/FLANGE) D4X16 (BLACK)	2	
* 15	980-063	TERMINAL	2	FOR NZL.GBR.SAF.ITA.FR.G.FRA.HOL.DEN.FIN SWE.AUT.NOR
* 16	994-273	NOISE SUPPRESSOR	1	FOR NZL.GBR.SAF.ITA.FR.G.FRA.HOL.DEN.FIN SWE.AUT.NOR
* 16	994-212	NOISE SUPPRESSOR	1	FOR SUI
17	608-DDW	BALL BEARING 608DDW	1	
* 18	360-277C	ARMATURE 110V - 115V	1	
* 18	360-277E	ARMATURE 220V - 230V	1	
* 18	360-277F	ARMATURE 240V	1	
19	305-782	FAN GUIDE ASS'Y	1	INCLUD.20
20	994-343	RUBBER BUSHING	2	
* 21	340-249C	STATOR 110V - 115V	1	
* 21	340-249E	STATOR 220V - 230V	1	
* 21	340-249F	STATOR 240V	1	
22	608-DDM	BALL BEARING 608DDMC2EPS2S	1	
23		HITACHI LABEL	1	
24	305-784	HOUSING	1	
25		NAME PLATE	1	
* 26	305-786	WIRING BLOCK (C)	1	

*: ALTERNATIVE PARTS

PARTS

CJ 65V2

ITEM NO.	CODE NO.	DESCRIPTION	NO. USED	REMARKS
26	305 - 785	WIRING BLOCK (C)	1	FOR NZL.GBR.SAF.ITA.FRG.FRA.HOL.DEN.FIN SWE.AUT.NOR.SUI
27	999 - 046	CARBON BRUSH (AUTO STOP TYPE) (1 PAIR)	2	
28	305 - 799	TAIL COVER	1	
29	305 - 736	TAPPING SCREW (W/FLANGE) D4X65	2	
30	949 - 219	MACHINE SCREW M4X16 (10 PCS.)	2	
31	305 - 762	UPPER COVER	1	
32	305 - 752	SPRING	2	
33	305 - 746	RUBBER PACKING	1	
34	305 - 745	PLUNGER HOLDER ASS'Y	1	INCLUD.55
35	961 - 181	PIN D6X47	1	
36	305 - 751	RUBBER CUSHION	1	
37	305 - 748	CONNECTOR HOLDER	1	
38	305 - 747	CONNECTOR	1	
39	940 - 916	CONNECTING PIECE	1	
40	940 - 917	NEEDLE BEARING NTN K6X9X8T2	1	
41	305 - 742	WEIGHT HOLDER	1	
42	963 - 349	WASHER (A)	2	
43	305 - 743	PACKING	1	
44	305 - 741	BALANCE WEIGHT (3 PCS.)	3	
45	305 - 738	ORBITAL CAM	1	
46	305 - 737	GEAR	1	
47	957 - 540	WASHER (A)	1	
48	305 - 734	SPINDLE	1	
49	954 - 014	TAPPING SCREW D4X30	2	
50	305 - 733	GEAR COVER	1	
51	305 - 735	HEX. SOCKET HD. BOLT (W/FLANGE) M4X6	2	
52	305 - 772	CHIP COVER	1	
53	305 - 592	NEEDLE D5X19.8	1	
54A	305 - 754	GUIDE ROLLER	1	
55	873 - 095	O - RING (P - 16)	1	
56	305 - 750	PLUNGER	1	
57A	305 - 749	SEAL LOCK FLAT HD. SCREW M4X10	2	
58	940 - 079	RETAINING RING FOR D8 SHAFT	1	
59	963 - 351	WASHER (B)	1	
60	305 - 755	HEX. SOCKET HD. BOLT (W/FLANGE) M5X12	1	
61	305 - 739	ORBITAL PIN	1	
62	305 - 740	FELT	1	
63	305 - 753	SHOOTER	1	
64	673 - 489	RETAINING RING (E - TYPE) FOR D5 SHAFT	1	
65	305 - 744	CHANGE KNOB	1	
66	982 - 454	SPRING (C)	1	
67	959 - 155	STEEL BALL D3.97 (10 PCS.)	1	
68A	306 - 893	BASE	1	
69	305 - 761	SPACER	1	TILL 1.1993
69A	306 - 895	SPACER	1	SINCE 2.1993
70	305 - 760	PLATE SPRING	2	
71	305 - 759	SUB BASE (A)	1	
72A	309 - 175	NYLOCK FLAT HD.SCREW M5X10	4	
73	963 - 371	BASE LOCKER	1	
74	306 - 060	HEX. SOCKET HD. BOLT (W/FLANGE) M4X20	1	

*: ALTERNATIVE PARTS

