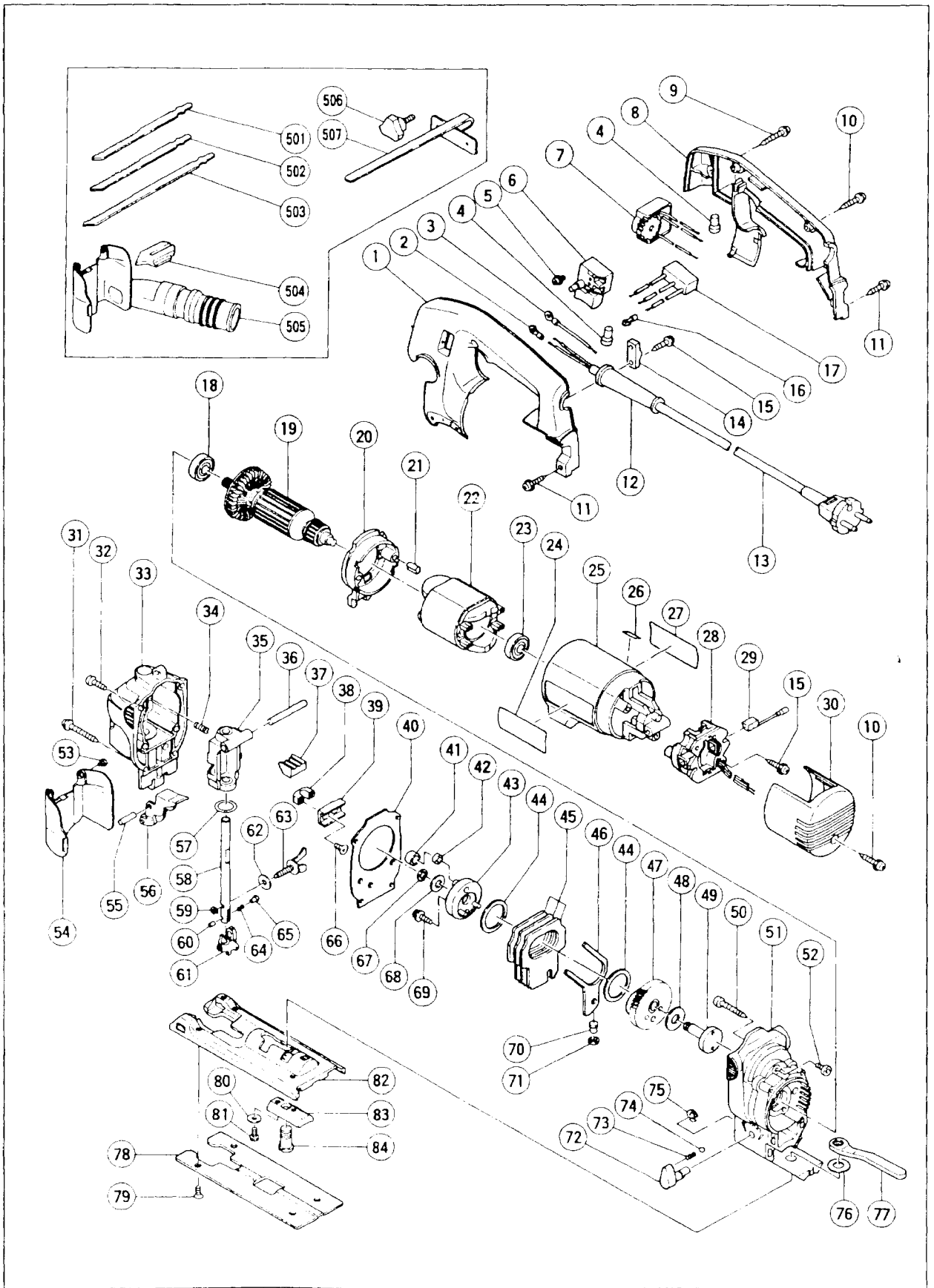


Assembly Diagram for CJ 110V



PARTS

CJ 110V

ITEM NO.	CODE NO.	DESCRIPTION	NO. USED	REMARKS
1	305-800	HANDLE (A)	1	
2	980-063	TERMINAL	2	FOR CORD
3	305-783	INTERNAL WIRE	1	
4	959-140	CONNECTOR 50091 (10 PCS.)	3	
5	305-499	MACHINE SCREW (W/WASHER) M3.5X6	4	
6	305-791	SWITCH (C) (2P SCREW TYPE) W/LOCK	1	
* 7	305-789	CONTROLLER CIRCUIT 220V - 240V	1	
* 7	305-790	CONTROLLER CIRCUIT 110V - 115V	1	
8	305-801	HANDLE (B)	1	
9	307-028	TAPPING SCREW (W/FLANGE) D4X25 (BLACK)	1	
10	301-653	TAPPING SCREW (W/FLANGE) D4X20 (BLACK)	3	
11	930-446	TAPPING SCREW (W/WASHER) D4X16	2	
12	953-327	CORD ARMOR D8.8	1	
* 13	500-234Z	CORD	1	(CORD ARMOR D8.8)
* 13	500-439Z	CORD	1	(CORD ARMOR D8.8) FOR NZL
* 13	500-436Z	CORD	1	(CORD ARMOR D8.8) FOR GBR
* 13	500-395Z	CORD	1	(CORD ARMOR D8.8) FOR SUI
* 13	500-432Z	CORD	1	(CORD ARMOR D8.8) FOR USA
14	960-286	CORD CLIP	1	
15	305-812	TAPPING SCREW (W/FLANGE) D4X16 (BLACK)	4	
16	980-063	TERMINAL	2	FOR NOISE SUPPRESSOR
17	994-273	NOISE SUPPRESSOR	1	
18	608-DDW	BALL BEARING 608DDW	1	
* 19	360-277C	ARMATURE 110V - 115V	1	
* 19	360-277E	ARMATURE 220V - 230V	1	
20	305-782	FAN GUIDE ASS'Y	1	INCLUD.21
21	994-343	RUBBER BUSHING	2	
* 22	340-249C	STATOR 110V - 115V	1	
* 22	340-249E	STATOR 220V - 230V	1	
23	608-DDM	BALL BEARING 608DDMC2EPS2S	1	
24		HITACHI LABEL	1	
25	305-784	HOUSING	1	
26		LABEL (CE MARK) (A)	1	
27		NAME PLATE	1	
* 28	305-785	WIRING BLOCK (C)	1	
* 28	305-788	WIRING BLOCK (C)	1	FOR USA
29	999-075	CARBON BRUSH (AUTO STOP TYPE) (1 PAIR)	2	
30	305-799	TAIL COVER	1	
31	305-736	TAPPING SCREW (W/FLANGE) D4X65	2	
32	949-219	MACHINE SCREW M4X16 (10 PCS.)	2	
33	316-109	UPPER COVER	1	
34	305-752	SPRING	2	
35	316-110	PLUNGER HOLDER ASS'Y	1	INCLUD.57
36	961-181	PIN D6X47	1	
37	305-751	RUBBER CUSHION	1	
38	316-112	CONNECTOR HOLDER	1	
39	316-111	CONNECTOR	1	
40	305-743	PACKING	1	
41	940-916	CONNECTING PIECE	1	
42	940-917	NEEDLE BEARING NTN K6X9X8T2	1	
43	305-742	WEIGHT HOLDER	1	

* : ALTERNATIVE PARTS

