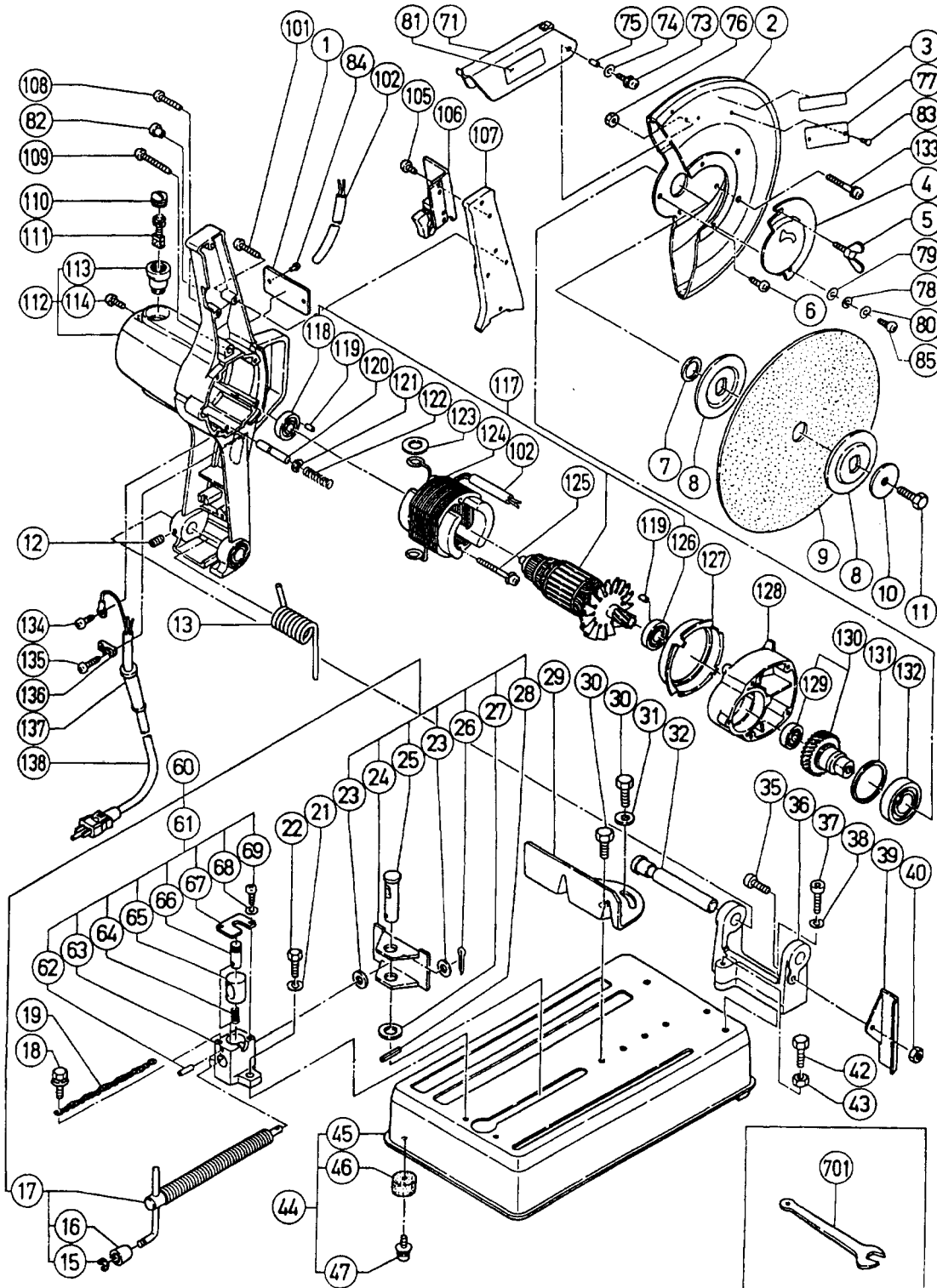


ELECTRIC TOOL PARTS LIST

■ CUT - OFF MACHINE
Model CC 14SB

1995 · 2 · 7
(E2)



PARTS

CC 14SB

ITEM NO.	CODE NO.	DESCRIPTION	NO. USED	REMARKS
1		NAME PLATE	1	
2	310-436	WHEEL COVER	1	
3	978-956	HITACHI LABEL	1	
4	310-440	SUB COVER	1	
5	949-304	WING BOLT M6X10 (10 PCS.)	1	
6	949-254	MACHINE SCREW M6X10 (10 PCS.)	1	
7	978-937	COLLAR	1	
8	310-427	WHEEL WASHER	2	
9	964-975Z	CUT - OFF WHEELS (C) 355MM (5 PCS.)	1	
10	965-724	WASHER (A)	1	
11	310-428	BOLT M10X25	1	
12	966-292	HEX. SOCKET SET SCREW M5X12	1	
13	978-934	SPRING	1	
15	310-432	RETAINING RING (E - TYPE) FOR D6 SHAFT	1	
16	971-563	COLLAR	1	
17	310-431	SCREW ASS'Y	1	INCLUD.15,16
18	978-930	BOLT (W/WASHERS) M8X25	1	
19	968-520	CHAIN (8 LINK)	1	
21	949-457	SPRING WASHER M8 (10 PCS.)	1	
22	949-626	BOLT M8X25 (10 PCS.)	1	
23	949-433	BOLT WASHER M8 (10 PCS.)	2	
24	964-853	WISE (A)	1	
25	978-943	BOLT	1	
26	949-537	SPLIT PIN D3X15 (10 PCS.)	1	
27	955-818	BOLT WASHER M16	1	
28	949-681	ROLL PIN D5X25 (10 PCS.)	1	
29	310-425	WISE (B)	1	
30	310-426	BOLT M10X20	2	
31	949-434	BOLT WASHER M10 (10 PCS.)	1	
32	978-933	SHAFT	1	
35	949-656	HEX. SOCKET HD. BOLT M8X20 (10 PCS.)	1	
36	310-435	HINGE	1	
37	949-846	HEX. SOCKET HD. BOLT M10X30 (10 PCS.)	2	
38	949-458	SPRING WASHER M10 (10 PCS.)	2	
39	978-983	SPARK SHOOT (B)	1	
40	949-566	LOCK NUT M8 (10 PCS.)	1	
42	310-434	BOLT M10X50	1	
43	310-433	NUT M10	1	
44	310-460	BASE ASS'Y	1	INCLUD.45 - 47
45		BASE	1	
46	964-851	BASE RUBBER	3	
47	978-607	MACHINE SCREW (W/WASHERS) M8X16	3	
60	310-430	ONE - TOUCH VISE ASS'Y	1	INCLUD.17,23 - 28,61
61	978-945	FEMALE SCREW ASS'Y (FOR ONE TOUCH VISE)	1	INCLUD.62 - 69
62		DOWEL PIN	1	
63		SCREW HOLDER	1	
64	978-946	SPRING	1	
65	978-947	FEMALE SCREW	1	
66		GRIP	1	
67	978-949	COVER	1	
68	949-453	SPRING WASHER M4 (10 PCS.)	2	

*: ALTERNATIVE PARTS

PARTS

CC 14SB

ITEM NO.	CODE NO.	DESCRIPTION	NO. USED	REMARKS
69	949-216	MACHINE SCREW M4X10 (10 PCS.)	2	
71	310-437	SAFETY COVER	1	
73	951-893	MACHINE SCREW (W/WASHERS) M6X20	2	
74	951-526	FILTER SEAL (C)	2	
75	310-438	COLLAR	2	
76	949-558	NUT M6 (10 PCS.)	2	
77	310-439	CAUTION PLATE	1	
78	974-484	WASHER	1	
79	967-329	WASHER (H)	1	
80	949-455	SPRING WASHER M6 (10 PCS.)	1	
81	951-521	CAUTION PLATE	1	
82	951-895	LOCK OFF BUTTON	1	
83	310-428	RIVET D2.5X3	2	
84	310-429	RIVET D2.5X3	2	
85	949-254	MACHINE SCREW M6X10 (10 PCS.)	1	
101	949-223	MACHINE SCREW M4X25 (10 PCS.)	2	
102		VINYL TUBE (I.D.9XT1.5X345)	1	
105	949-214	MACHINE SCREW M4X6 (10 PCS.)	2	
106	952-771	SWITCH (A) (2P SCREW TYPE) W/LOCK	1	
107	310-443	HANDLE COVER	1	
108	949-226	MACHINE SCREW M4X35 (10 PCS.)	1	
109	949-229	MACHINE SCREW M4X45 (10 PCS.)	1	
110	978-445	BRUSH CAP	2	
111	999-038	CARBON BRUSH (1 PAIR)	2	
112	310-442	HOUSING ASS'Y	1	INCLUD.113,114
113	984-956	BRUSH HOLDER	2	
114	949-216	MACHINE SCREW M4X10 (10 PCS.)	2	
117	360-370C	ARMATURE ASS'Y 115V	1	INCLUD.118,126
118	620-1DD	BALL BEARING 6201DDUCMAV2S	1	
119	976-441	BEARING LOCK	2	
120	978-989	STOPPER PIN	1	
121	310-432	RETAINING RING (E - TYPE) FOR D6 SHAFT	1	
122	948-363	GAUGE SPRING	1	
123	978-961	STOP PLATE	2	
124	340-327C	STATOR 115V	1	
125	985-941	MACHINE SCREW (W/SP. WASHER) M5X65	2	
126	600-3VV	BALL BEARING 6003VVCMP2S	1	
127	978-970	FAN GUIDE	1	
128	310-444	GEAR CASE	1	
129	620-0VV	BALL BEARING 6200VVCMP2S	1	
130	978-990	SPINDLE ASS'Y	1	INCLUD.129
131	978-965	BEARING COLLAR	1	
132	620-6DD	BALL BEARING 6206DDUCMP2S	1	
133	978-967	MACHINE SCREW (W/SP. WASHER) M6X65	4	
134	949-216	MACHINE SCREW M4X10 (10 PCS.)	1	
135	949-219	MACHINE SCREW M4X16 (10 PCS.)	2	
136	937-631	CORD CLIP	1	
137	310-441	CORD ARMOR D10.8	1	
138	500-400Z	CORD	1	(CORD ARMOR D10.8) FOR USA

*: ALTERNATIVE PARTS

