



SERVICE PARTS LIST

BULLETIN NO.
54-40-0221

SPECIFY CATALOG NO. AND SERIAL NO. WHEN ORDERING PARTS		REVISED BULLETIN 54-40-0220	DATE Sept. '86
D.I. VARIABLE SPEED JIG SAW			
CATALOG NO. 6255	STARTING SERIAL NO. 696-14600	WIRING INSTRUCTION 58-01-0092	

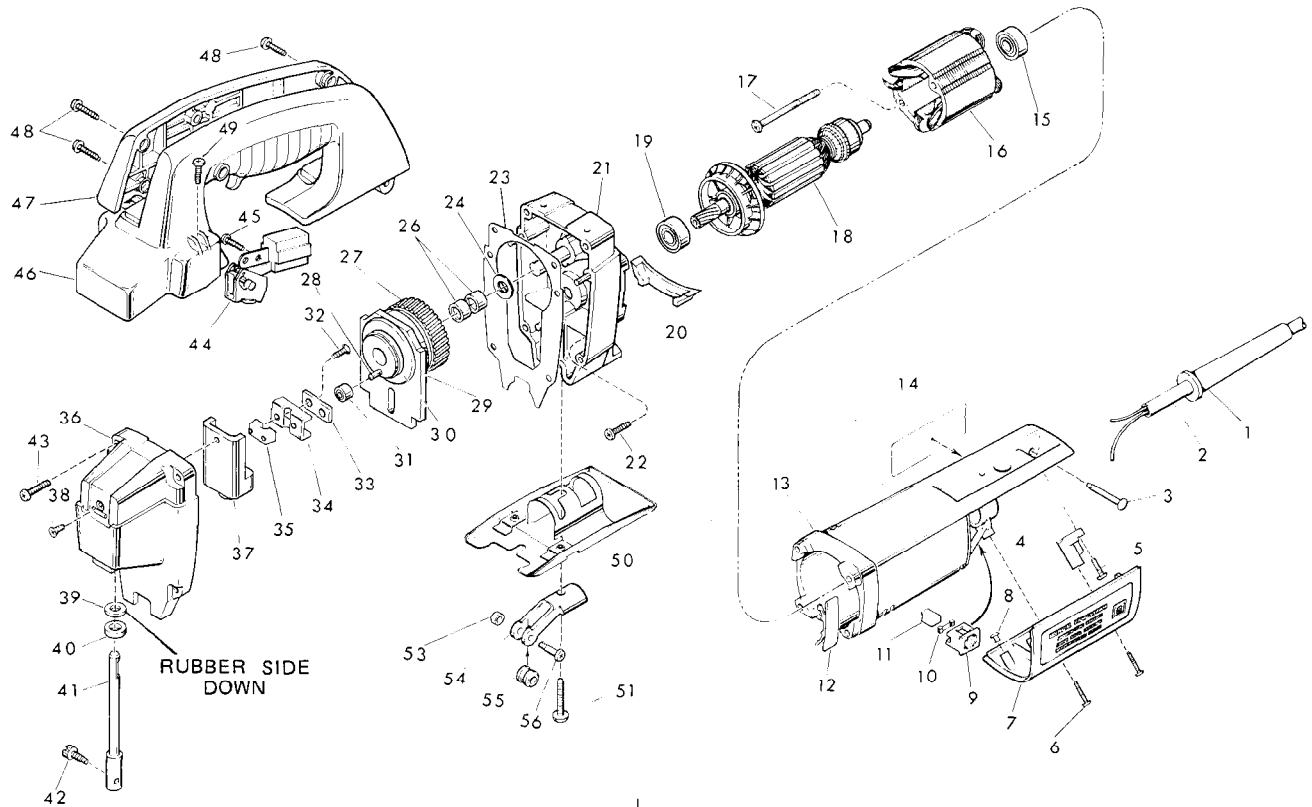


FIG.	PART NO.	DESCRIPTION OF PART	NO. REQ.
1	44-76-0110	Cord Protector	(1)
2	22-64-0215	Cord Set	(1)
3	06-72-0810	Tapered Rivet	(1)
4	31-17-0120	Cord Clamp	(1)
★ 5	06-82-7270	8-16 x 5/8" Torx Plastite Screw	(2)
★ 6	06-82-7270	8-16 x 5/8" Torx Plastite Screw	(2)
7	31-15-0280	Cover	(1)
8	42-38-0180	Rubber Bumper	(2)
9	22-20-0450	Brush Holder	(2)
10	23-52-0190	Brush Spring	(2)
11	22-16-0275	Carbon Brush	(2)
12	31-15-0300	Vent Cover	(1)
13	31-50-0310	Motor Housing	(1)
14	12-75-1876	Service Nameplate	(1)
15	02-04-0850	Ball Bearing	(1)
16	18-07-0040	120 V. Field	(1)
★ 17	06-82-7410	8-16 x 1-7/8" Torx Plastite Screw	(2)
★ 18	16-07-0036	120 V. Armature With 22-84-0680 Fan	(1)
19	02-04-0847	Ball Bearing	(1)
20	31-05-0160	Air Baffle Insert	(1)
21	14-30-0410	Gear Case Assembly	(1)
★ 22	06-82-7270	8-16 x 5/8" Torx Plastite Screw	(4)
23	43-44-0700	Gasket	(1)
24	45-88-0480	Bronze Washer	(1)
25	32-30-0011	Drive Gear Assy. (Incl. Fig. Nos. 26 thru 30)	(1)
26	02-50-2423	Roller Bearing	(2)
27	32-30-0010	Drive Gear	(1)
28	06-65-1572	Pin	(1)
29	42-87-0070	Counter Balance	(1)
30	44-86-0335	Counter Balance Retainer	(1)
31	44-96-0080	Roller Assembly	(1)
★ 32	06-82-0790	6-32 x 7/16" Flat Hd. Screw	(2)
33	44-66-5390	Clamp Plate	(1)
★ 34	45-98-0186	Yoke	(1)
★ 35	42-68-0450	Clamp	(1)
36	14-38-0350	Front Housing Assy. (Incl. Fig. Nos. 37 thru 40)	(1)
37	42-40-0595	Spindle Bearing	(1)
★ 38	06-82-0950	6-32 x 3/8" Flat Hd. Torx Screw	(1)
39	45-88-1030	Felt/Rubber Washer	(1)
40	-	Front Housing Insert	(1)
★ 41	38-50-5611	Spindle Assembly	(1)
★ 42	45-04-0565	Blade Clamp Screw	(1)
★ 43	06-82-5346	8-32 x 3/4" Torx Taptite Screw	(4)
44	23-66-0967	Switch w/Lock Button	(1)
★ 45	06-82-7409	8-32 x 1/2" Torx Taptite Screw	(1)
46	31-44-1230	Handle Half - Left	(1)
47	31-44-1220	Handle Half - Right	(1)
★ 48	06-82-7270	8-16 x 5/8" Torx Plastite Screw	(4)
★ 49	06-82-7252	8-32 x 3/8" Torx Plastite Screw	(2)
50	45-16-0510	Swivel Shoe Assembly	(1)
★ 51	06-81-0506	1/4-20 x 1" Pan Hd. Screw	(1)
52	43-56-0360	Blade Guide Assy. (Incl. Fig. 53 thru 56)	(1)
53	06-57-6058	6-32 Lock Nut	(1)
54	28-10-0720	Blade Roller Casting	(1)
55	43-56-0380	Blade Roller	(1)
56	45-04-0610	Shoulder Screw	(1)