



# SERVICE PARTS LIST

SPECIFY CATALOG NO. AND SERIAL NO. WHEN ORDERING PARTS		REVISED BULLETIN	DATE
<b>4-3/4" DEEP CUT TSC BANDSAW</b>		54-40-0278	June 2012
<b>CATALOG NO. 6230</b>	<b>STARTING SERIAL NO. 678E</b>	<b>WIRING INSTRUCTION 58-01-0762</b>	
<b>SEE BULLETIN NO. 54-40-0775 FOR NEXT REVISION</b>			

00 0

**EXAMPLE:**  
 Component Parts  
 (Small #) Are Included  
 When Ordering The  
 Assembly (Large #).

**RECALL NOTICE!**  
**See back page for important safety information.**

FIG.	PART NO.	DESCRIPTION OF PART	NO. REQ.	FIG.	PART NO.	DESCRIPTION OF PART	NO. REQ.
1	22-64-2000	Cord Set	(1)	60	42-12-0070	Blade Pulley Axle	(2)
2	44-76-0210	Cord Protector	(1)	61	06-82-8864	10-24 x 1/2" Pan Hd. Sem T-25	(2)
3	31-17-0155	Cord Clamp	(1)	62	42-38-0041	Bumper	(1)
4	06-82-7270	8-16 x 5/8" Stl. Plastite T-20	(2)	63	06-82-5330	10-32 x 5/8" Pan Hd. Tapt. T-25	(2)
5	06-82-5292	1/4-20 x 7/8" Pan Hd. Taptite T-30	(4)	64	42-28-0205	Front Blade Guide Block	(1)
6	31-44-0725	Right Handle Half	(1)	65	42-28-0210	Rear Blade Guide Block	(1)
7	06-82-7299	8-16 x 7/8" Stl. Plastite T-20	(4)	66	02-25-0260	Cam Follower	(6)
8	31-44-0720	Left Handle Half	(1)	67	06-82-5574	10-24 x 7/8" Pan Hd. Tapt. T-25	(2)
10	23-66-0770	Switch	(1)	68	06-82-8864	10-24 x 1/2" Pan Hd. Sem T-25	(1)
11	06-82-7252	8-32 x 3/8" Pan Hd. Stl. Tapt. T-20	(1)	69	43-54-0250	Blade Guard	(1)
12	28-62-0031	Blade Release Lever	(1)	70	06-82-9264	10-24 x 1/2" Pan Hd. Tapt. Shld. T-25	(1)
13	06-42-2200	Woodruff Key	(1)	71	-----	Bandsaw Blade - Select From Catalog	(1)
14	45-88-7105	Wave Washer	(1)	72	02-50-3235	Needle Bearing	(1)
15	06-82-8828	8-32 x 5/16" Pan Hd. Tapt. T-20	(1)	73	14-73-0160	Blade Release Shaft Assembly	(1)
16	06-75-4675	3/8-16 x 1" Skt. Hd. Screw	(1)	74	45-36-0720	Retaining Plate Spacer	(4)
17	31-44-0330	Front Handle	(1)	75	44-52-0120	Blade Backing Pad	(1)
18	23-44-0220	Brush Cap	(2)	76	28-41-0920	Front Pulley Guard	(1)
19	22-16-0275	Carbon Brush	(2)	77	42-40-1010	Bronze Bushing	(1)
20	22-20-0020	Brush Tube Housing	(2)	78	44-66-0550	Pulley Guard Retaining Plate	(2)
21	06-82-5294	1/4-20 x 3/4" Pan Hd. Taptite T-30	(6)	79	06-82-3810	1/4-20 x 1-1/4" Flat Hd. Taptite T-27	(4)
22	28-90-0200	Pulley Support	(1)	80	40-50-0710	Blade Tension Spring	(2)
23	28-50-6000	Motor Housing	(1)	81	06-75-1991	1/4-20 x 4" Hex Hd. Cap Screw	(2)
24	02-04-0851	Ball Bearing	(1)	82	06-57-5000	1/4-20 Lock Nut	(2)
25	31-55-0020	Coil Shield	(1)	83	42-18-0190	Blade Tension Bar	(2)
26	23-16-0020	Field Insulator	(1)	84	06-82-5298	1/4-20 x 1" Pan Hd. Taptite T-30	(2)
★ 27	18-30-1600	120 Volt Field	(1)	85	06-82-3024	1/4-20 x 1/2" Fil. Hd. Taptite T-30	(3)
28	06-82-7425	8-16 x 2" Pan Hd. Plastite T-20	(2)	★ 86	22-84-0531	Fan	(1)
29	31-05-0170	Fan Baffle	(1)	87	23-16-1340	Insulator	(1)
★ 30	16-30-0600	120 Volt Armature	(1)	88	22-20-0780	Brush Tube	(2)
31	02-04-1050	Ball Bearing	(1)	89	23-52-0255	Brush Spring Assembly	(2)
32	06-65-1155	3/16 x 5/8" Groove Pin	(1)				
33	28-28-1699	Diaphragm	(1)				
34	02-04-1020	Ball Bearing	(1)				
35	32-40-1680	Intermediate Gear	(1)				
36	06-42-1200	Woodruff Key	(1)				
37	36-18-0050	Worm Shaft	(1)				
38	02-04-1030	Ball Bearing	(1)				
39	28-14-2110	Gear Case	(1)				
40	06-82-3060	1/4-20 x 1-5/16" Pan Hd. Taptite T-30	(4)				
41	06-82-5270	Nameplate Screw	(2)				
42	12-99-0250	Nameplate Blank	(1)				
43	06-82-5394	5/16-18 x 13/16" Pan Hd. T-40	(2)				
44	02-04-1210	Ball Bearing	(1)				
45	32-90-0110	Worm Gear	(1)				
47	36-66-0525	Worm Gear Shaft	(1)				
48	02-04-2700	Ball Bearing	(1)				
49	14-46-1175	Chain/Sprocket Kit	(1)				
50	06-82-8842	8-32 x 3/8" Pan Hd. Tapt. Sem T-20	(2)				
51	-----	Roller Chain	(1)				
52	45-69-0010	Blade Pulley Tire	(2)				
53	45-88-7165	Pulley Hub Washer	(4)				
54	34-60-1400	Snap Ring	(2)				
55	25-20-1220	Blade Pulley Cover	(2)				
56	06-82-3060	1/4-20 x 1-5/16" Fil. Hd. Tapt. T-30	(3)				
57	28-95-0120	Blade Pulley	(2)				
58	42-40-0580	Sleeve Bearing	(4)				
59	-----	Sprocket	(1)				

**FIG. NOTES**  
 34, 35, 36, 37, 38 Assemble and install in Gear Case before 44 thru 48.

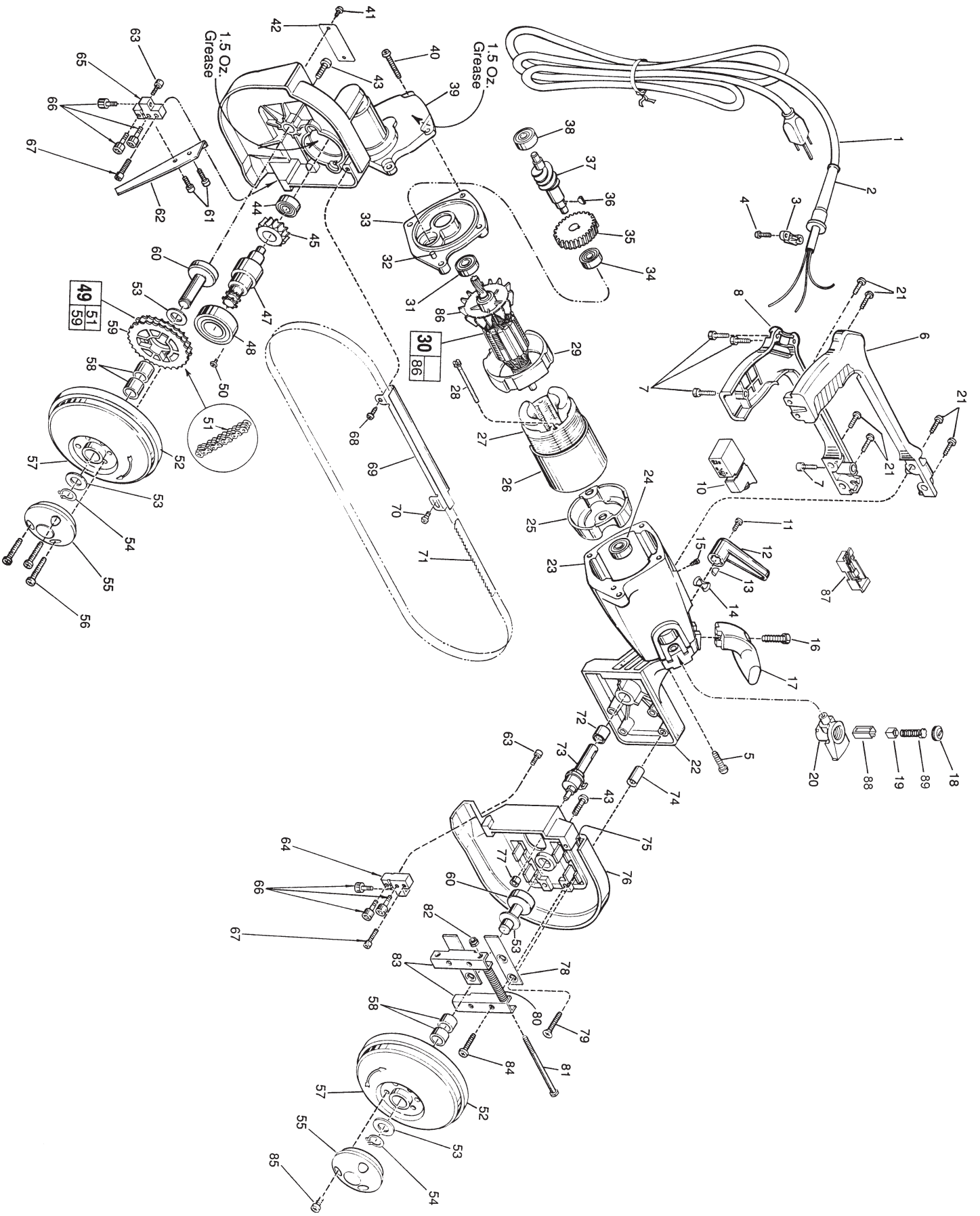
43 Apply Type 242 Blue Loctite. Torque to 75-115 in./lbs.

11, 61, 63, 67 Apply Type 242 Blue Loctite.

66 Torque to 20-30 in./lbs.

83 Dimension between outside edges of blade tension bars 3-11/16" ± 1/16".

**FIG. LUBRICATION**  
 39 3 oz. Type "G" Grease, No. 49-08-4140. 1.5 oz. in each of two locations. (See Illustration).



## RECALL NOTICE-

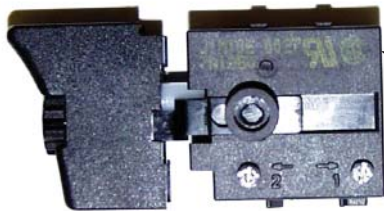
Milwaukee Electric Tool Corporation is providing a no-charge warranty service to owners of **6227 and 6230 Variable Speed Portable Electric Band Saws**. For operator safety, the Management of Milwaukee wants you to be aware of a potential product safety hazard existing in some **6227 and 6230 Variable Speed Portable Electric Band Saws**. The trigger switch may stick in the "on" position. This could subject an operator to a risk of injury.

**6227 and 6230 Variable Speed Band Saws**, within the serial number ranges shown below and sold between January 18, 2000 and September 15, 2000 are affected.

Catalog No. **6227** Serial Number **6 7 4 D 4 00060015** thru **674D400240167**

Catalog No. **6230** Serial Number **678E499520116** thru **678E400371101**

6230 and 6234 Variable Speed Band Saws, within the serial number ranges shown above **should be inspected** for the presence of a **23-66-0770** Switch with a date code within 0001 through 0034. If the unit contains a subject date coded 23-66-0770 switch, please return your Variable Speed Portable Electric Band Saw to the nearest Milwaukee **factory** Service Center or Authorized Service Station for no-charge warranty replacement of the switch.



manufacturers part number J1MT05 &  
date code 0001 thru 0034 location

If the nameplate has an 'X' stamped or etched into the tool's nameplate, next to the catalog number, the tool has been repaired and the defective switch has already been **replaced**.

**If you need assistance in locating the service facility nearest you or have questions please call 1.800.729.3878**