



SERVICE PARTS LIST

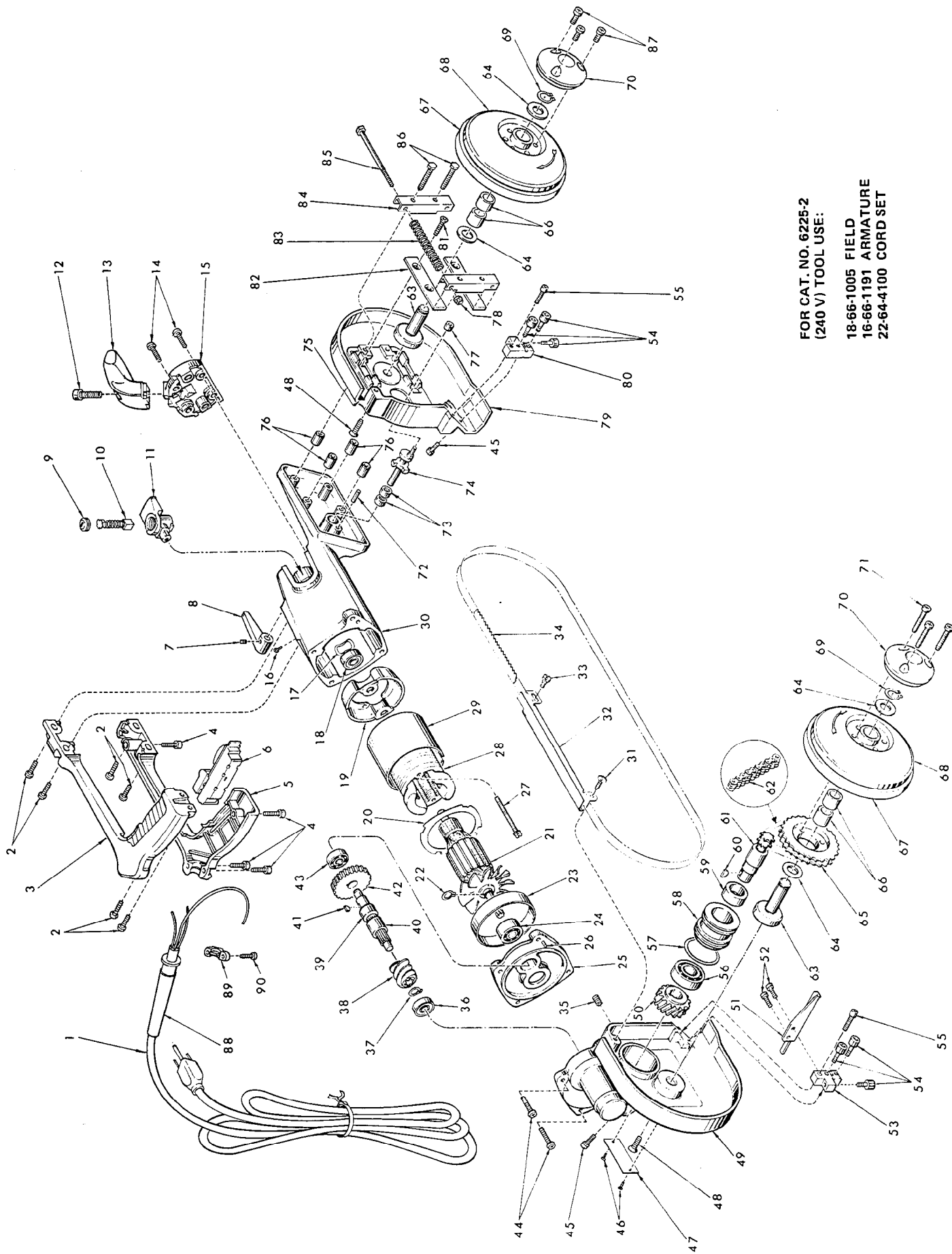
BULLETIN NO.
54-40-1203

SPECIFY CATALOG NO. AND SERIAL NO. WHEN ORDERING PARTS		REVISED BULLETIN 54-40-1202	DATE Jan. '82
TWO SPEED BAND SAW			
CATALOG NO. 6225	STARTING SERIAL NO. 457-96817	WIRING INSTRUCTION 58-01-0721	

7 AMP - High
4 AMP - Low

NOTE: SOME TOOLS WERE MADE WITH CORD SETS HAVING A MOLDED STRAIN RELIEF. IF SO, REPLACE WITH FIG. NO. 1 AND FIG. NOS. 88, 89 & 90.

FIG.	PART NO.	DESCRIPTION OF PART	NO. REQ.	FIG.	PART NO.	DESCRIPTION OF PART	NO. REQ.
★ 1	22-64-0155	Cord Set (See Note)	(1)	45	06-75-2405	10-32 x 5/8" Skt. Hd. Screw	(2)
★ 2	06-81-4230	1/4-20 x 7/8" Pan Hd. Screw	(6)	46	06-85-0200	Nameplate Screw	(2)
★ 3	31-44-0505	Right Handle Half	(1)	47	12-99-0250	Nameplate Blank	(1)
★ 4	06-95-0216	8-16 x 5/8" Plastite Pan Hd. Screw	(4)	★48	06-81-3105	5/16-18 x 1" Phil. Dr. Flat Hd. Screw	(2)
★ 5	31-44-0515	Left Handle Half	(1)	49	28-14-1380	Gear Case	(1)
6	23-66-1040	Switch	(1)	50	32-90-0101	Worm Gear	(1)
7	06-83-2440	10-32 x 5/16" Hdls. Skt. Screw	(1)	51	42-38-0030	Bumper	(1)
8	28-62-0010	Blade Release Lever	(1)	52	06-81-5140	10-24 x 1/2" Button Skt. Hd. Screw	(2)
9	23-44-0130	Brush Retaining Screw	(2)	53	42-28-0210	Rear Blade Guide Block	(1)
10	22-18-0450	Carbon Brush Assembly	(2)	★54	02-25-0260	Cam Follower	(6)
★11	22-22-0285	Brush Holder Assembly	(2)	55	06-75-2110	10-24 x 7/8" Skt. Hd. Screw	(2)
12	06-75-4675	3/8-16 x 1" Skt. Hd. Screw	(1)	56	02-04-2000	Ball Bearing	(1)
13	31-44-0330	Front Handle	(1)	57	34-40-3115	O-Ring	(1)
14	06-81-7800	1/4-20 x 3/4" Fil. Hd. Sem	(4)	58	43-76-0360	Worm Gear Shaft Housing	(1)
15	28-20-0125	Motor End Cover	(1)	59	02-50-6400	Needle Bearing	(1)
16	06-81-8625	6-32 x 1/4" Ground Screw	(1)	60	06-42-2200	Woodruff Key	(1)
17	45-88-7110	Wavy Spring Washer	(1)	61	36-66-0510	Worm Gear Shaft	(1)
18	02-04-0911	Ball Bearing	(1)	62	42-60-0100	Drive Chain	(1)
19	31-55-0062	Coil Shield	(1)	63	42-12-0070	Blade Pulley Axle	(2)
20	42-14-0150	Baffle	(1)	64	45-88-7165	Pulley Hub Washer	(4)
21	16-62-1191	120V. Armature (Includes Fig. No. 22)	(1)	65	31-88-0010	Sprocket	(1)
22	34-60-0827	Retaining Ring	(1)	★66	42-40-0580	Sleeve Bearing	(4)
23	45-36-0710	Baffle Spacer	(1)	67	45-69-0010	Blade Pulley Tire	(2)
24	02-04-1040	Ball Bearing	(1)	★68	28-95-0120	Blade Pulley	(2)
25	28-28-1480	Diaphragm	(1)	69	34-60-1400	Snap Ring	(2)
26	06-65-1206	3/16 x 3/4" Groove Pin	(1)	★70	28-20-1221	Blade Pulley Cover	(2)
★27	06-95-3310	8-16 x 2" Plastite Pan Hd. Screw	(2)	71	06-81-7875	1/4-20 x 1-1/4" Fil. Hd. Screw	(3)
28	18-62-1005	120V. Field	(1)	72	06-65-1155	3/16 x 5/8" Groove Pin	(1)
29	23-16-0430	Field Insulator	(1)	73	02-50-2423	Needle Bearing	(2)
30	28-50-6160	Motor Housing	(1)	74	45-08-0145	Blade Release Shaft	(1)
31	06-81-5692	10-24 x 1/2" Pan Hd. Screw	(1)	75	44-52-0120	Blade Backing Pad	(1)
32	43-54-0250	Blade Guard	(1)	76	45-36-0720	Retaining Plate Spacer	(4)
33	45-04-0450	Shoulder Screw	(1)	77	02-50-1630	Needle Bearing	(1)
34	48-39-0360	Band Saw Blade	(1)	78	06-57-5000	1/4-20 Lock Nut	(2)
35	06-83-2686	1/4-20 x 3/4" Set Screw	(1)	79	28-41-0500	Front Pulley Guard	(1)
36	02-04-1030	Ball Bearing	(1)	80	42-28-0205	Front Blade Guide Block	(1)
37	34-60-0950	Retaining Ring	(1)	81	06-81-2950	1/4-20 x 1-1/4" Flat Hd. Skt. Screw	(4)
38	32-91-0111	Worm	(1)	82	44-66-0550	Pulley Guard Retaining Plate	(2)
39	36-18-0025	Worm Drive Shaft	(1)	83	40-50-0710	Blade Tension Spring	(2)
40	45-36-1000	Spacer	(1)	84	42-18-0190	Blade Tension Bar	(2)
41	06-42-1200	Woodruff Key	(1)	85	06-75-0255	1/4-20 x 4" Hex. Hd. Screw	(2)
42	32-40-1680	Intermediate Gear	(1)	86	06-75-0150	1/4-20 x 1" Hex. Hd. Screw	(2)
43	02-04-1020	Ball Bearing	(1)	★87	06-95-0335	1/4-20 x 1/2" Taptite Screw	(3)
44	06-81-1230	1/4-20 x 1-1/8" Fil. Hd. Screw	(4)	★88	44-76-0120	Cord Protector	(1)
				★89	31-17-0150	Cord Clamp	(1)
				★90	06-95-0216	8-16 x 5/8" Plastite Pan Hd. Screw	(2)



FOR CAT. NO. 6225-2
(240 V) TOOL USE:

18-66-1005 FIELD
16-66-1191 ARMATURE
22-64-4100 CORD SET