



# SERVICE PARTS LIST

**BUL. 54-32-1104**

## 7" POLISHER

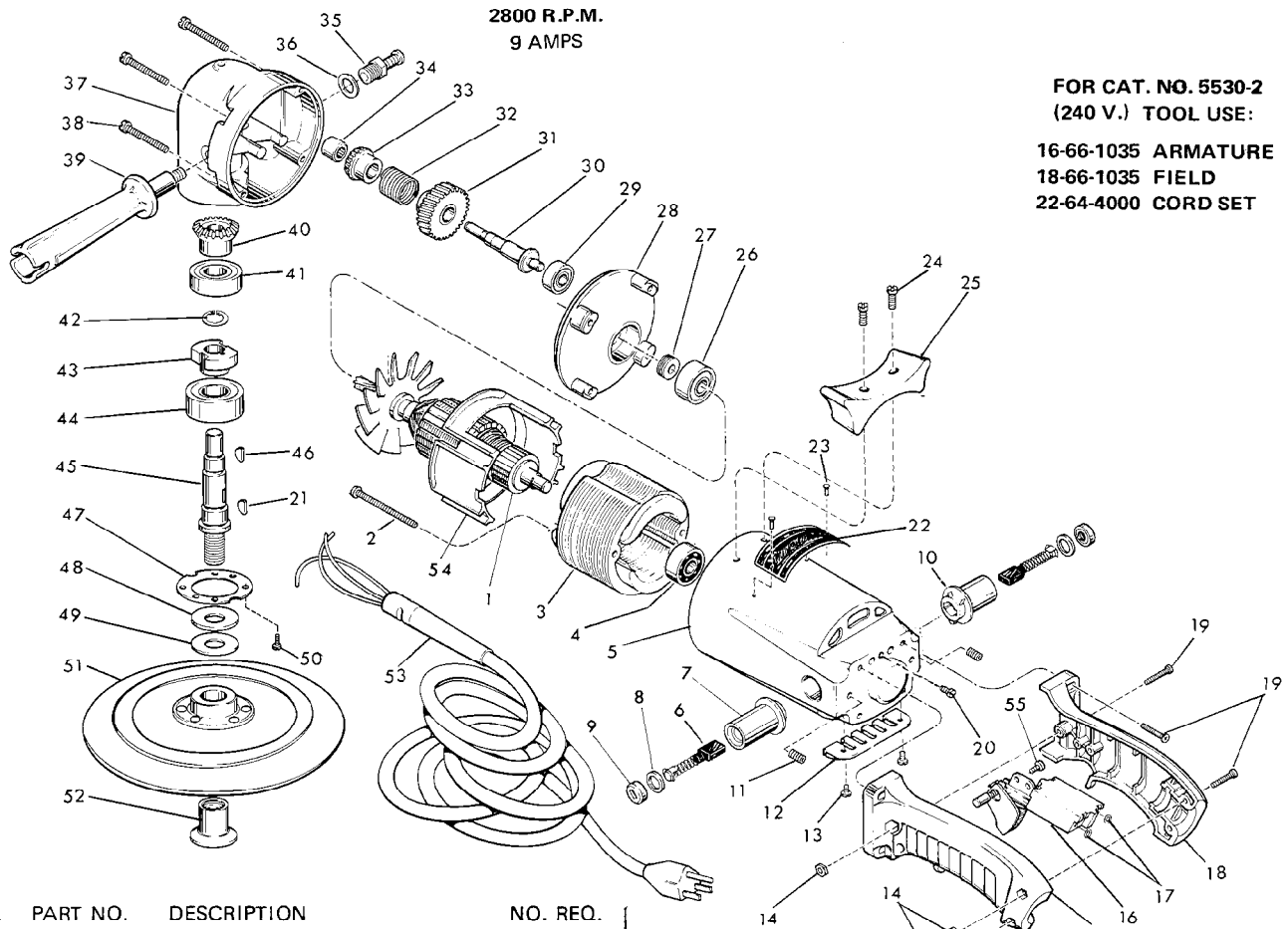
REVISED BUL. 54-32-1103 DATE Sept. '78

**Catalog No. 5530**

Starting Serial No. **140-9300**

WIRING INSTRUCTIONS **58-01-0305**

Specify Catalog and Serial No. when ordering parts



2800 R.P.M.  
9 AMPS

FOR CAT. NO. 5530-2  
(240 V.) TOOL USE:  
16-66-1035 ARMATURE  
18-66-1035 FIELD  
22-64-4000 CORD SET

FIG.	PART NO.	DESCRIPTION	NO. REQ.	
	1	16-62-1035	115 Volt Armature	(1)
	2	06-81-8950	8-32x2-1/4 Rd. Hd. Sem	(2)
	3	18-62-1035	115 Volt Field	(1)
	4	02-04-0970	Ball Bearing	(1)
★	5	28-50-5100	Motor Housing	(1)
★	6	22-18-0175	Carbon Brush	(2)
	7	22-22-1231	Brush Holder	(2)
	8	43-44-0180	Brush Cap Gasket	(2)
	9	23-44-0100	Brush Retaining Screw	(2)
	10	23-86-0075	Insulating Washer	(2)
★	11	06-83-2000	10-24x1/4 Set Screw	(2)
	12	44-66-0230	Commutator Cover Plate	(1)
	13	06-81-8650	6-32x1/4 Rd. Hd. Sem	(2)
★	14	06-55-1000	10-24 Hex Nut	(3)
★	15	31-44-0590	Handle Half Left	(1)
★	16	23-66-0165	Switch (16 Amp)	(1)
	17	06-97-1800	Lockwasher	(4)
★	18	31-44-0580	Handle Half Right	(1)
★	19	06-81-4207	10-24x7/8 Phillips Pan Hd. Screw	(7)
★	20	06-81-9125	10-24x1/4 Ground Screw	(1)
	21	06-42-1600	Woodruff Key	(1)
	22	12-99-0032	Nameplate Blank	(1)
	23	06-85-0200	Nameplate Screw	(2)
	24	06-81-6950	10-24x1/2 Fil. Hd. Sem	(2)
	25	28-79-0321	Tool Rest	(1)
	26	02-04-1260	Ball Bearing	(1)
	27	45-28-0060	Grease Slinger	(1)
	28	28-28-0981	Diaphragm	(1)
	29	02-04-0910	Ball Bearing	(1)

FIG.	PART NO.	DESCRIPTION	NO. REQ.	
	30	36-66-3251	Intermediate Shaft	(1)
	31	32-40-1311	Intermediate Gear	(1)
	32	40-50-3100	Drive Spring	(1)
	33	32-05-1101	Bevel Gear	(1)
	34	02-50-1630	Needle Bearing	(1)
	35	44-20-0060	Spindle Lock Assembly	(1)
	36	45-88-5320	Flat Washer	(1)
	37	28-14-1082	Gear Case	(1)
	38	06-81-7300	10-24x1-3/4 Fil. Hd. Sem	(4)
	39	43-62-0570	Side Handle	(1)
	40	32-05-1081	Bevel Gear	(1)
	41	02-04-1710	Ball Bearing	(1)
	42	34-60-1290	Retaining Ring	(1)
	43	42-74-0065	Spindle Lock Cog	(1)
★	44	02-04-2065	Ball Bearing	(1)
	45	38-50-3751	Spindle	(1)
	46	06-42-1200	Woodruff Key	(1)
	47	45-88-0220	Spindle Retaining Washer	(1)
	48	45-88-0141	Hub Thrust Washer	(1)
	49	45-88-0160	Spindle Rubber Washer	(1)
	50	06-81-6050	8-32x5/16 Fil. Hd. Sem	(6)
	51	49-36-2500	7" Rubber Backing Pad	(1)
	52	49-40-0160	Disc Nut	(1)
★	53	22-64-0080	Cord Set	(1)
★	54	31-05-0100	Baffle	(1)
★	55	06-95-0215	8-18x1/2 Pan Hd. Thread Form Screw	(1)
	56	12-98-7081	Caution Plate (Not Shown)	(1)