



SERVICE PARTS LIST

BULLETIN NO.
54-24-0174

SPECIFY CATALOG NO. AND SERIAL NO. WHEN ORDERING PARTS		REVISED BULLETIN	DATE
1/2" REV. MAGNUM HAMMER-DRILL		54-24-0173	July '94
CATALOG NO. 5374-1	STARTING SERIAL NO. 715-28224	WIRING INSTRUCTION 58-01-0077	

EXAMPLE:
Component Parts
(Small #) Are Included
When Ordering The
Assembly (Large #).

00 0

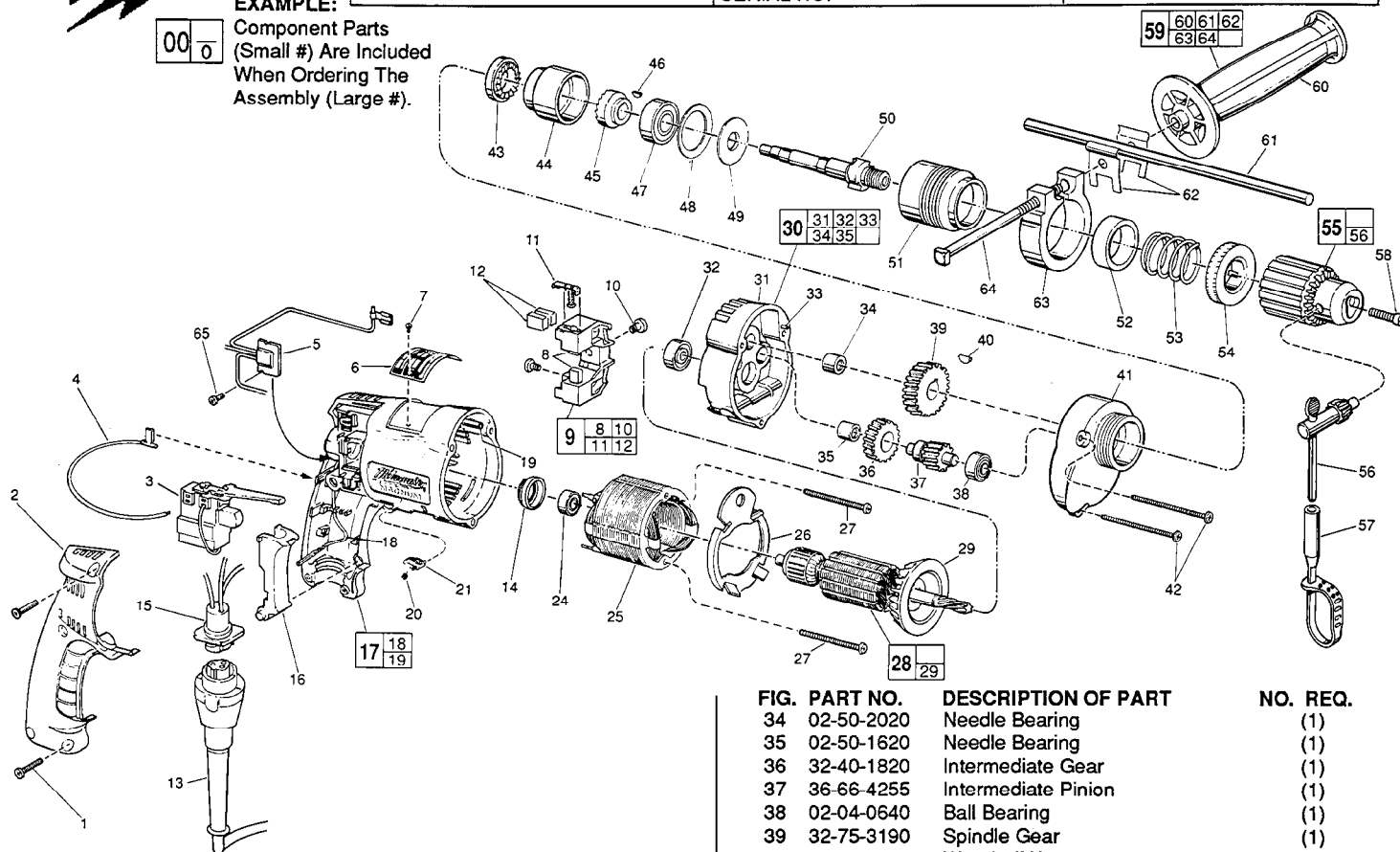


FIG.	PART NO.	DESCRIPTION OF PART	NO. REQ.
	1	06-82-7266 7-18 x 11/16" Plastite Screw T-20	(5)
★	2	31-15-0401 Handle Cover	(1)
	3	23-66-1665 Trigger Speed Control Reversing Switch	(1)
★	4	23-94-6245 2-1/4" Lead Assembly	(1)
★	5	14-20-0250 Remote Electronic Assembly	(1)
	6	12-99-0225 Nameplate Blank	(1)
	7	06-85-0200 Nameplate Screw	(2)
	8	22-16-0300 Carbon Brush	(2)
★	9	22-22-0356 Brush Holder Assembly	(1)
	10	31-75-0040 Brush Holder Screw	(2)
	11	22-20-0355 Brush Spring Assembly	(2)
	12	22-16-0300 Carbon Brush (Spares)	(2)
	13	48-76-4008 8 Foot Quik-Lok Cord Set	(1)
★	14	22-72-0100 Bearing Cup	(1)
★	15	22-56-0630 Pin Housing Assembly	(1)
	16	45-72-0080 Trigger	(1)
★	17	14-38-0540 Motor Housing Assembly	(1)
★	18	23-94-9960 Ground Wire Assembly	(1)
★	19	44-60-1290 Grounding Pin	(1)
	20	40-50-0085 Lock Button Spring	(1)
	21	42-42-0150 Lock Button	(1)
	24	02-04-0645 Ball Bearing	(1)
★	25	18-11-0075 120 Volt Field	(1)
★	26	42-14-0345 Baffle	(1)
★	27	06-82-7393 7-18x 2" Pan Hd. Screw T-20	(2)
	28	16-10-0500 120 Volt Armature	(1)
	29	22-84-0650 Fan Assembly	(1)
	30	14-13-0460 Diaphragm Assembly	(1)
	31	Diaphragm	(1)
	32	02-04-0847 Ball Bearing	(1)
	33	06-65-0825 1/8 x 1/2" Groove Pin	(1)

FIG.	PART NO.	DESCRIPTION OF PART	NO. REQ.
	34	02-50-2020 Needle Bearing	(1)
	35	02-50-1620 Needle Bearing	(1)
	36	32-40-1820 Intermediate Gear	(1)
	37	36-66-4255 Intermediate Pinion	(1)
	38	02-04-0640 Ball Bearing	(1)
	39	32-75-3190 Spindle Gear	(1)
	40	06-42-0800 Woodruff Key	(1)
	41	28-14-1795 Gear Case	(1)
	42	06-82-7411 7-18 x 2-3/16" Pan Hd. Plastite T-20	(3)
	43	44-84-0165 Fixed Ratchet	(1)
	44	42-52-0250 Bearing Housing	(1)
	45	44-84-0160 Rotating Ratchet	(1)
	46	06-42-1200 Woodruff Key	(1)
	47	02-04-1536 Ball Bearing	(1)
	48	45-88-7350 Bearing Retainer Washer	(1)
	49	45-88-7365 Spring Support Washer	(1)
	50	38-50-5575 Spindle	(1)
	51	45-22-0405 Sleeve (Left Hand Thread)	(1)
	52	45-88-7375 Felt Washer	(1)
	53	40-50-4950 Spring	(1)
	54	42-76-0200 Locking Collar	(1)
	55	48-66-1365 1/2" Reversing Chuck	(1)
	56	48-66-3280 Chuck Key	(1)
	57	48-66-4040 Key Holder	(1)
	58	06-75-3150 1/4-20 x 1" Socket Hd. Screw L.H. Thread	(1)
	59	14-34-0250 Side Handle Assembly	(1)
	60	43-62-0865 Side Handle	(1)
	61	44-94-0161 Depth Rod	(1)
	62	42-68-0390 Depth Gauge Clamp	(2)
	63	25-82-0140 Clamping Collar	(1)
	64	42-32-0161 5/16-18 x 3-1/2" Square Hd. Bolt	(1)
★	65	06-82-7212 4-20x1/4" Pan Hd. Plastite T-10	(1)
		10-98-5986 Warning Label	(1)

FIG. LUBRICATION
41 1-1/2 Oz. Type "E" Grease, No. 49-08-4122.
43,45 Apply Thin Coat "U" Grease, No. 49-08-0150,
To Ratchet Teeth.

MILWAUKEE ELECTRIC TOOL CORPORATION
13135 W. LISBON RD., BROOKFIELD, WI 53005