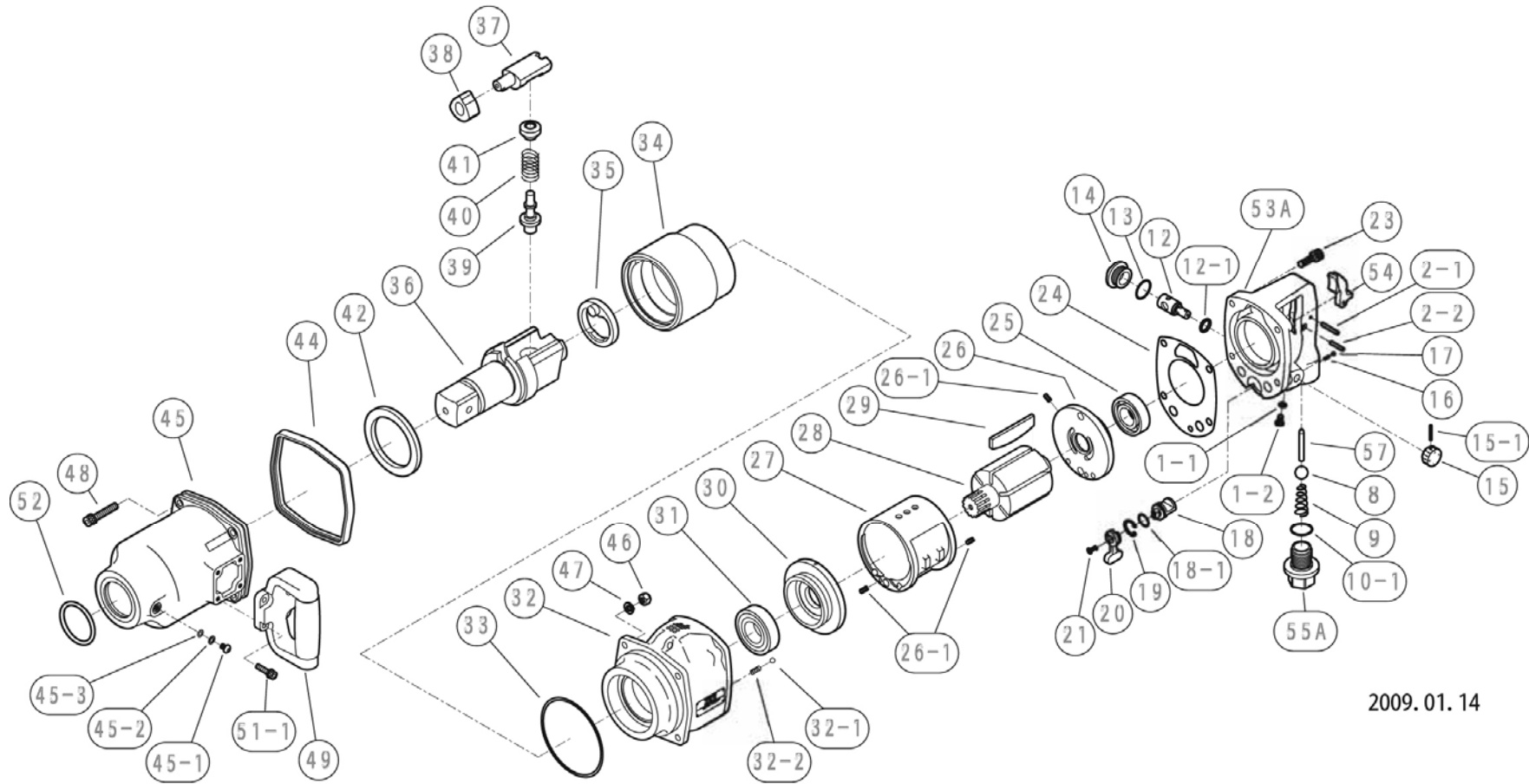




## Parts List for the JET-5000 1-1/2" Square Drive Impact Wrench



2009.01.14

**WALTER MEIER (Manufacturing) Inc.**

427 New Sanford Road  
LaVergne, Tennessee 37086  
Ph.: 800-274-6848  
www.jettools.com

**Part No. M-505955**

Revision G 06/2012

Copyright © 2012 Walter Meier (Manufacturing) Inc.

## Parts List for the JET-5000 1-1/2" Square Drive Impact Wrench

Index No	Part No	Description	Qty	Index No	Part No	Description	Qty
1-1	Z040P6	O-Ring	1	32	0550181BJ	Motor Case CP (Front Exhaust)	1
1-2	Z0846X10	Screw	1	32-1	SB-6MM	Steel Ball, 6mm	1
2-1	Z0614X28	Pin	1	32-2	0132991	Knock Spring	1
2-2	Z0614X22	Pin	1	33	Z041S110	O-Ring	1
8	Z0115/8D	Throttle Valve	1	34	0550026	Hammer Wheel	1
9	0132190	Throttle Spring	1	35	0550050	Retainer	1
10-1	Z040P28J	O-Ring	1	36	0550030A	1/2" Square Drive Anvil	1
12	0446017	Regulator Valve	1	37	0550028	Anvil Piece	1
12-1	Z040P14	O-Ring	1	38	0550027	Cam	1
13	Z041S26	O-Ring	1	39	0550051B	Plunger A	1
14	04460391	Plug	1	40	0550053	Spring	1
15	0442314	Regulator Knob	1	41	0550052B	Plunger B	1
15-1	Z0563X22	Pin	1	42	0550029	Bushing	1
16	0114193	Knock Spring	1	44	0142071	Rear Rubber Protector	1
17	Z0104D	Steel Ball, 4mm	1	45	0550182	Impact Housing CP	1
18	0142015B	Reverse Valve	1	45-1	Z0886X8	Grease Screw	1
18-1	Z041S18	O-Ring	1	45-2	Z0996	Toothed Lock Washer	1
19	Z03121	Retainer	1	45-3	Z040P6	O-Ring	1
20	0132915	Reverse Lever	1	46	Z0918	Lock Nut	4
21	Z0674X12	Screw	1	47	Z0968X1	Washer	4
23	Z0668X25A	Bolt	4	48	Z0668X45A	Bolt	4
24	0142006B	Motor Housing Gasket	1	49	0442387	Dead Handle CP	1
25	BB-6205	Rear Bearing	1	51-1	Z0666X20A	Bolt	4
26	0132124	Rear End Plate	1	52	Z040P50	O-Ring	1
26-1	Z0565X10	Spring Pin	3	53A	0550180BNS	Handle CP (NPT)	1
27	0140509	Cylinder	1	54	0345417	Throttle Lever	1
28	0550021	Rotor	1	55A	0132919NIS	Inlet Bushing (NPT)	1
29	0550022	Rotor Blade	6	57	0550113BT	Throttle Lever Pin	1
30	0550023	Front End Plate	1				
31	BB-6206Z	Ball Bearing	1				

To order parts or reach our service department, call 1-800-274-6848 Monday through Friday (see our website for business hours, [www.jettools.com](http://www.jettools.com)). Having the Model Number and Serial Number of your tool available when you call will allow us to serve you quickly and accurately.