



SERVICE PARTS LIST

BUL. 54-22-0003

1/4 H.P. BENCH GRINDER

REVISED BUL
54-22-0002

DATE
Aug. '68

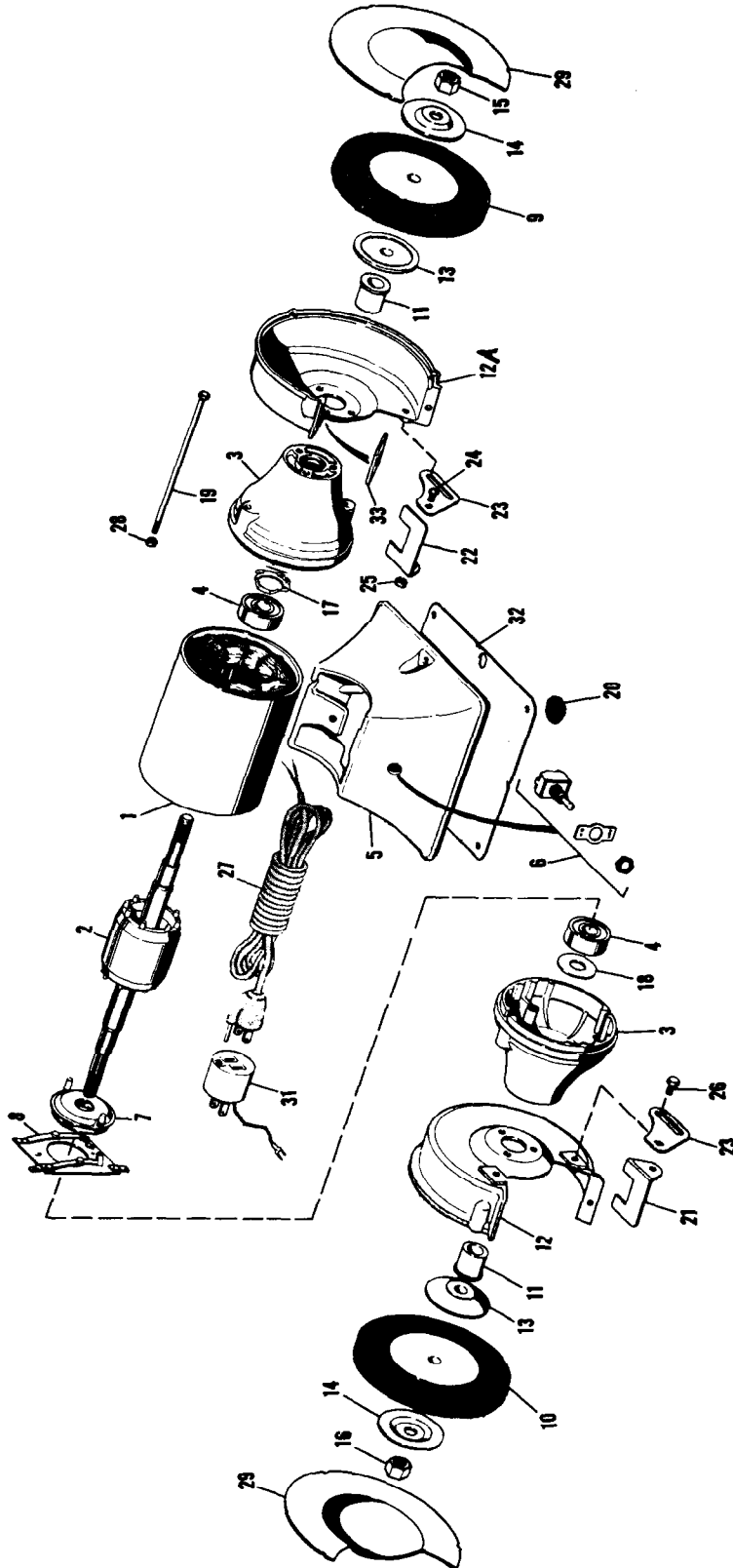
Catalog No. **4900**

MODEL
REF. NO. **40769B3**

WIRING INSTR.

Both Model and Serial No. must be furnished to obtain correct parts.

115 VOLT SINGLE PHASE





SERVICE PARTS LIST

1/4 H.P. BENCH GRINDER

When ordering replacement parts, please give complete motor identification number off name plate of tool.

ILLUSTRATED PARTS

FIG.	PART NO.	DESCRIPTION OF PART	FIG.	PART NO.	DESCRIPTION OF PART	
1	23-58-0251	Stator & Frame	17	40-50-7665	Spring	
2	23-40-0321	Rotor & Shaft	18	45-14-0050	Shim	
★ 3	45-12-0250	End Shield (Aluminum)	(2)	19	06-75-0056	10-32x7 Cap Screw (2)
4	02-04-5040	Bearing	(2)	20	42-38-0090	Rubber Bumper (4)
5	42-20-0140	Base	21	44-85-0140	L.H. Tool Rest	
6	23-66-0630	On-Off Switch	22	44-85-0060	R.H. Tool Rest	
7	23-66-0052	Rotating Switch	23	42-36-0320	Tool Rest Support (2)	
8	23-66-0390	Stationary Switch	24	06-10-0400	1/4-20x1/2 Carriage Bolt (2)	
9		See Catalog	25	06-55-1500	1/4-20 Hex Nut (2)	
10		See Catalog	26	06-75-0073	1/4-20x3/8 Hex. Hd. Bolt (2)	
11	45-36-0632	Wheel Locating Sleeve (2)	27	22-64-0550	Card Set	
★ 12	43-54-0191	L.H. Wheel Guard (Aluminum)	28	06-55-1100	10-32 Hex Nut (2)	
★ 12a	43-54-0181	R.H. Wheel Guard (Aluminum)	29	42-92-0210	Wheel Guard Cover (2)	
13	43-34-0110	Inner Flange (2)	31	48-03-0010	Adaptor	
14	43-34-0100	Outer Flange (2)	32	42-92-0120	Base Cover	
15	06-55-3150	R.H. Hex Nut, 1/2-20	33	45-12-0120	Spark Guard (2)	
16	06-55-3175	1/2-20 L.H. Hex Nut				