



# SERVICE PARTS LIST

**BULLETIN NO.**  
**54-06-2730**

SPECIFY CATALOG NO. AND SERIAL NO. WHEN ORDERING PARTS		REVISED BULLETIN	DATE
<b>CORDLESS 12 VOLT LED WORKLIGHT</b>			Apr. 2010
CATALOG NO. <b>49-24-0146</b>	STARTING SERIAL NO. <b>C11A</b>	WIRING INSTRUCTION	

**EXAMPLE:**  
Component Parts (Small #) Are Included  
When Ordering The Assembly (Large #).

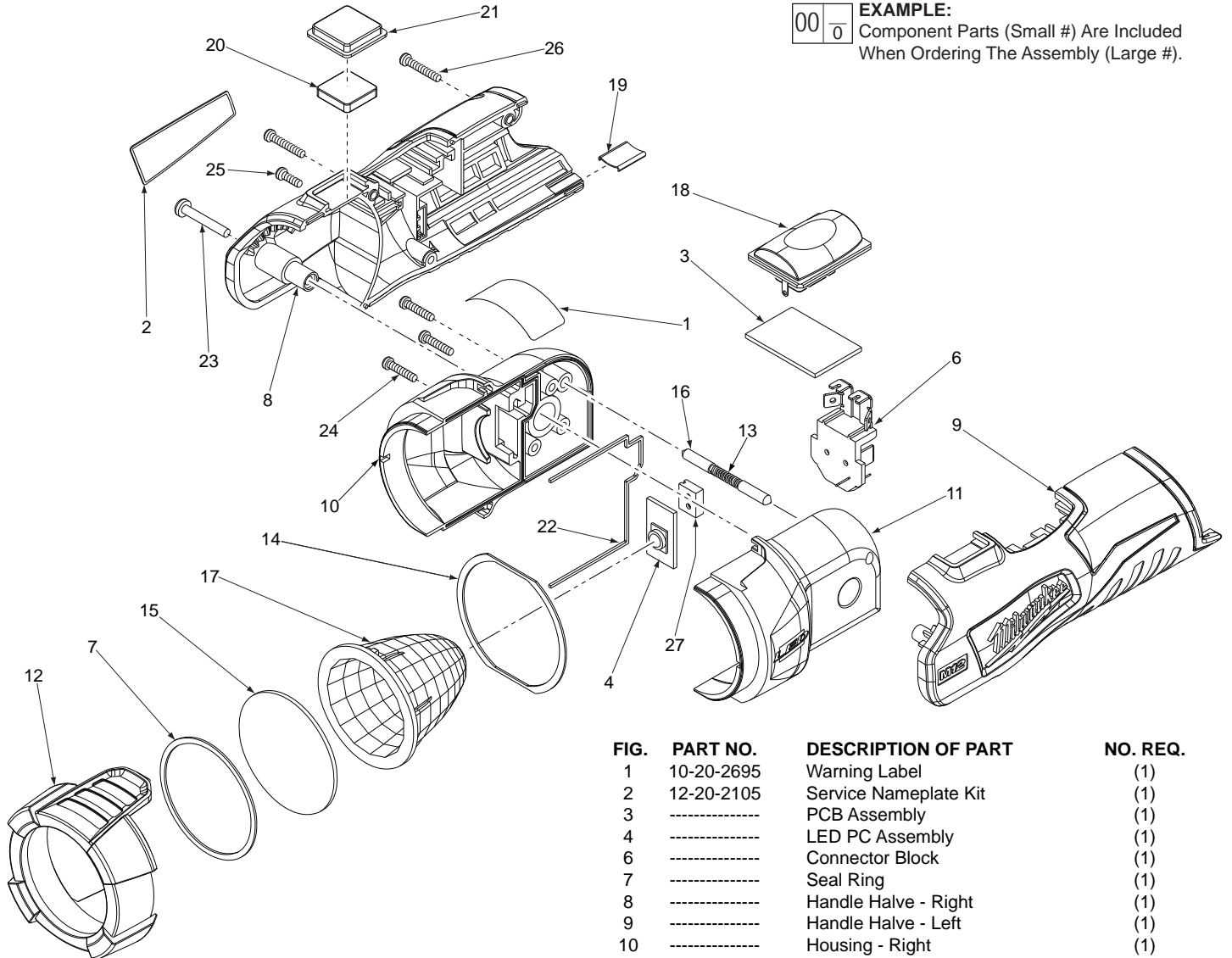


FIG.	PART NO.	DESCRIPTION OF PART	NO. REQ.
1	10-20-2695	Warning Label	(1)
2	12-20-2105	Service Nameplate Kit	(1)
3	-----	PCB Assembly	(1)
4	-----	LED PC Assembly	(1)
6	-----	Connector Block	(1)
7	-----	Seal Ring	(1)
8	-----	Handle Halve - Right	(1)
9	-----	Handle Halve - Left	(1)
10	-----	Housing - Right	(1)
11	-----	Housing - Left	(1)
12	-----	Bezel	(1)
13	-----	Compression Spring	(1)
14	-----	Sealing Gasket	(1)
15	-----	Lens	(1)
16	-----	Detent Pin	(2)
17	-----	Reflector	(1)
18	-----	Push Button Switch	(1)
19	-----	Retainer Clip	(1)
20	-----	Magnet	(1)
21	-----	Protective Cover	(1)
22	-----	Rubber Strap	(1)
23	-----	M3 x 20 Pan Hd. T-9 Screw	(1)
24	-----	6 x 12 Pan Hd. Phillips Screw	(3)
25	-----	6 x 8 Pan Hd. T-9 Screw	(1)
26	-----	6 x 15 Pan Hd. T-9 Screw	(2)
27	-----	Sealing Washer	(1)