

FULL LOAD WATTS  
OF  
MILWAUKEE ELECTRIC TOOLS

MODEL NO.	FULL LOAD WATTS	FULL LOAD AMPS	MODEL NO.	FULL LOAD WATTS	FULL LOAD AMPS	MODEL NO.	FULL LOAD WATTS	FULL LOAD AMPS
0101	340	3.0	1700-1	1100	10.0	5590	1050	10.0
0102-1	370	3.0	1750	1250	11.0	5610	900	8.0
0120	340	3.0	1750-1	1100	10.0	5650	950	10.0
0121	370	3.25	1850	1250	11.0	6000	220	2.0
0122-1	370	3.25	1850-1	1100	10.0	6020	1200	11.5
0140	340	3.0	2200-1	1250	10.0	6060	1200	11.5
0160	340	3.0	2400-1	1250	10.0	6200	1600	13.0
0180	340	3.0	3820	1600	15.0	6250	360	2.3
0181	370	3.25	3880	1600	15.0	6280	360	4.0
0190	340	3.0	3940	1600	15.0	6293	1100	10.5
0191	370	3.25	4020	1600	15.0	6320	1400	12.0
0200	340	3.0	4030	1600	15.0	6331	1200	10.5
0220	340	3.0	4035	1600	15.0	6360	1250	12.0
0221	370	3.25	4250-1	400	4.0	6370	1300	13.0
0222-1	370	3.25	4260-1	1100	11.5	6400	1400	12.0
0800	400	4.0	4270-1	1100	11.5	6505	460	4.0
0850	400	4.0	4280-1	1100	11.5	6510	460	4.0
0870	400	4.0	4290-1	1100	11.5	6541-1	370	3.25
0890	400	4.0	4295-1	1100	11.5	6542-1	370	3.25
1000	400	4.0	5191	350	3.3	6571-1	370	3.25
1000-1	400	4.0	5200	1000	10.0	6581-1	370	3.25
1100	400	4.0	5220	1300	11.5	6582-1	370	3.25
1100-1	400	4.0	5240	1300	11.5	6620-1	400	4.0
1120	250	15.5	5260	1300	11.5	6640-1	400	4.0
1200	400	4.0	5265	460	4.4	6747-1	500	4.5
1200-1	400	4.0	5300	1150	10.0	6781-1	310	3.25
1600	660	6.0	5350	650	6.0	6798-1	515	4.5
1600-1	660	6.0	5360	390	4.0	6800	240	2.1
1620-1	660	6.0	5390	515	4.5	6810	300	3.0
1650	660	6.0	5400	300	3.0	6820	700	6.4
1650-1	660	6.0	5410	680	6.4	6830	700	6.4
1675-1	750	7.5	5450	1100	10.0	8600	360	3.2
1700	1250	11.0	5530	1100	10.0	9050	----	4.0

## SPECIFICATIONS

### ENGINE 5 H.P.

Type: 4 cycle, L head, single cylinder, 2-13/16" bore, 1-15/16" stroke, 12.0 cu. in. displacement, 5 H.P.

COOLING: Pressure air cooled.

GOVERNOR: Mechanical type preset.

IGNITION: Flywheel magneto

STARTING: Recoil

OIL SYSTEM: Splash lube, 21 ounces

FUEL TANK: 2 quart Capacity

ALTERNATOR: 1750 WATT

TYPE: Revolving field two pole, single phase, 115 volt, 60 cycle. Drip proof design, direct connected on tapered shaft.

ELECTRICAL: 115 volts at 15.2 amps.

ROTOR: Laminated electrical steel. Pressed on sintered brass collection rings. Windings are precision semi-automatic wound.

STATOR: Laminated electrical steel pressed into steel stator band. Precision wound, automatic tied coils pressed end returns.

BEARING: Lifetime sealed ball bearing running in steel bearing insert.

VARNISH: Class H Westinghouse double dip 7 hour cure cycle.

INSULATION: Modified class H insulating system DMD liners, heavy polythermaleze wire insulation. Dacron tie tape, modified fiber wedges.

COOLING: Centrifical blower directly connected to rotor shaft.

PAINT COLOR: Metco Red.

### INTRODUCTION

This alternator has been designed and manufactured to give trouble free service if operating and maintenance instructions are followed.

### INSTALLATION

1. Uncrate and inspect for shipping damage. If unit is damaged, notify freight line immediatly.
2. This model requires 21 ounces of oil. NOTE: there are 32 ounces to one quart. The weight of oil used is governed by the external temperature in which the alternator is used.

Summer— SAE 30  
Winter — 5W 20

3. Gasoline:— non-leaded regular.
4. Ventilation - Adequate ventilation should be provided for safe, efficient operation.

### MAINTENANCE

1. Periodically (approximately every 200 operating hours) inspect the alternator brushes and clean the slip rings. Refer to exploded view of alternator on next page. To gain access to these parts, remove 3 screws (item 28) and the fan cover (item 27). Remove Hex Hd. Mach. Screw (item 10) and fan (item 8). This will expose rectifier and brush holder DO NOT START ALTERNATOR UNTIL ITEM 10 CAPSCREW IS SECURELY TIGHTENED. This item holds to rotor assembly to the engine shaft. Brushes which are chipped, cracked or worn to a length of less than 5/16" should be replaced.

2. To clean slip rings, polish with a piece of fine sandpaper while rotor is turning. DO NOT USE EMERY PAPER. Disconnect spark plug wire and turn engine with recoil starter.

After servicing brushes and slip rings, reinstall the brushes, brush holder, fan and fan cover. Be sure to connect the red wire to the brush nearest the fan.

3. The alternator should be kept clean and reasonably dry.

### ILLUSTRATED PARTS LIST

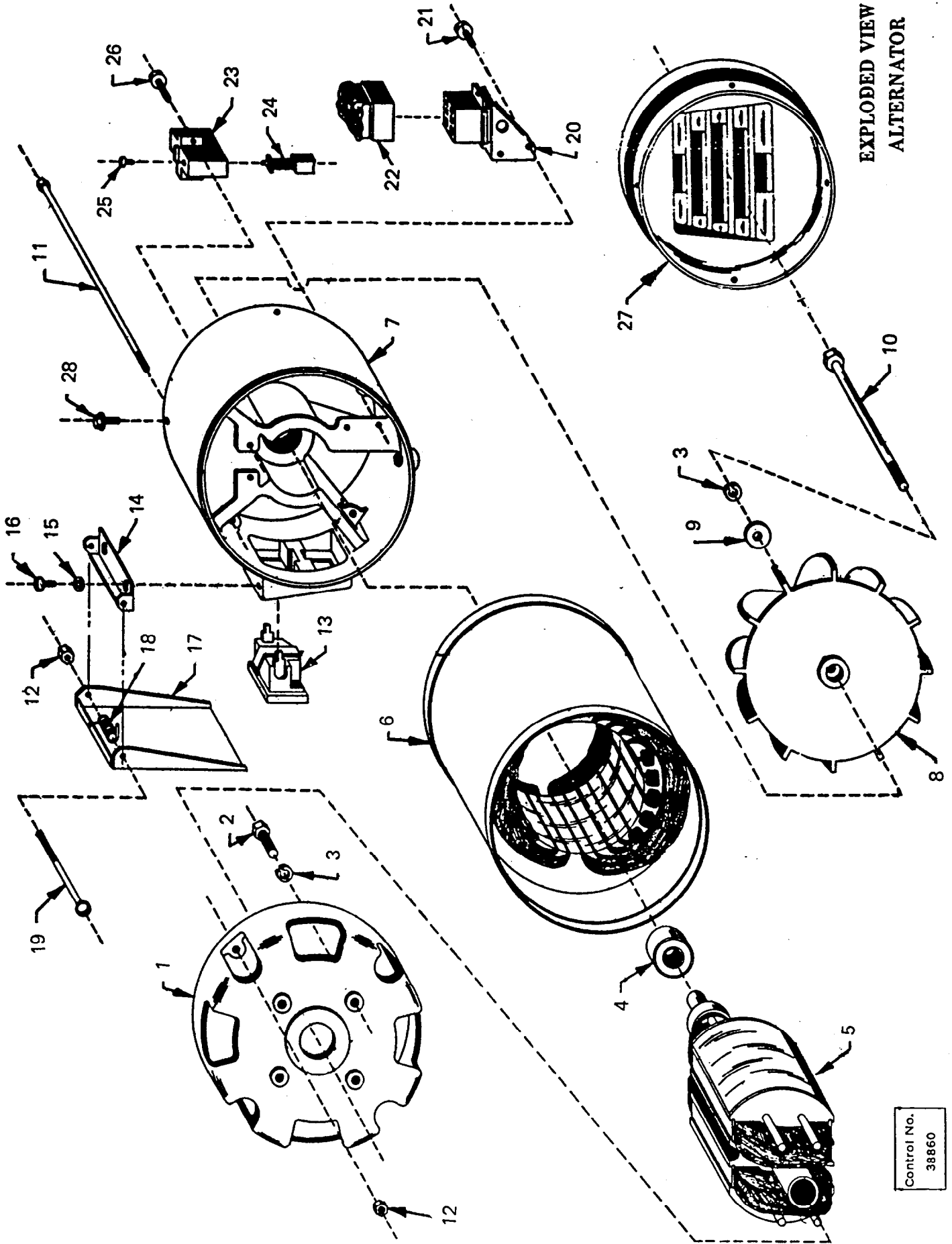
All replacement parts for the alternator are shown on the exploded view illustrations. Each part is identified with an index number which is keyed to the parts list. The index numbers are used solely for identification - not for ordering parts.

To save time - to make sure that you get the correct part - be sure to include the following information with your parts order;

1. Part name and part number (NOT the index number shown on the exploded view.)
2. The alternator model and serial number (found on the nameplate.)
3. Quantity of each part ordered.

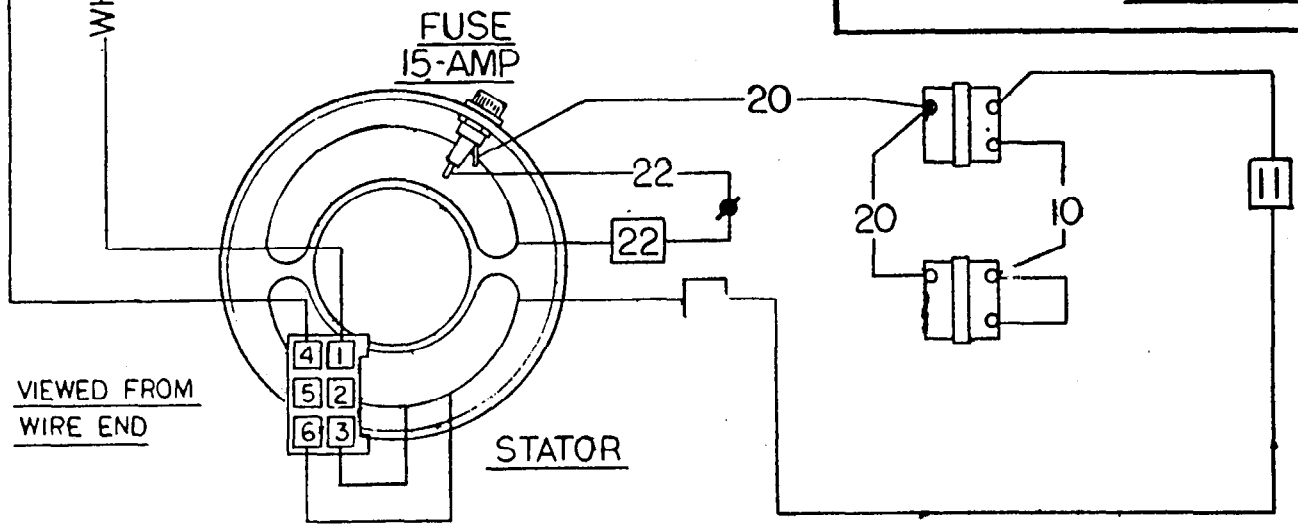
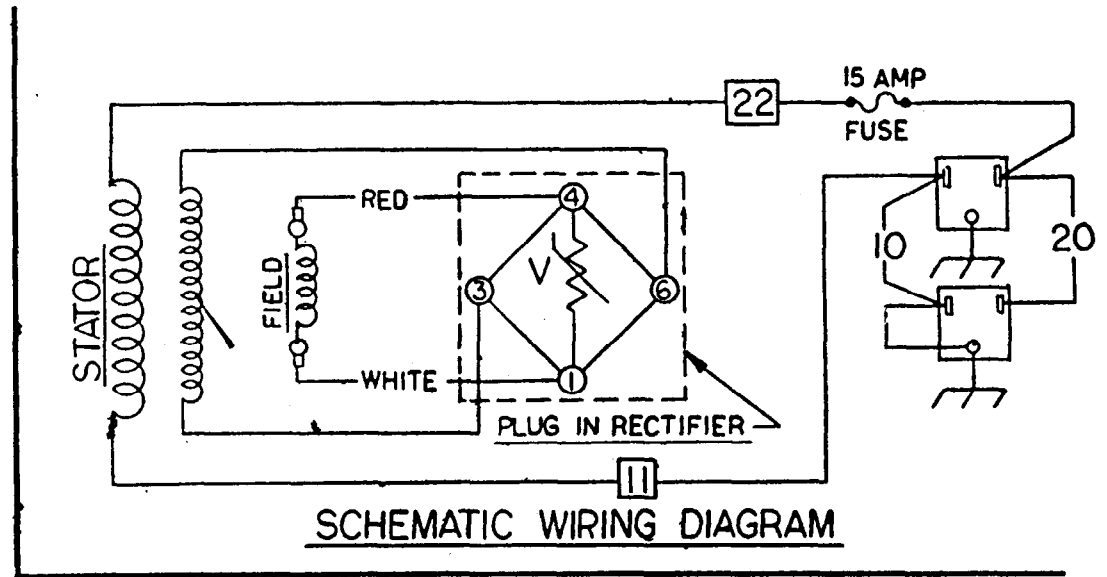
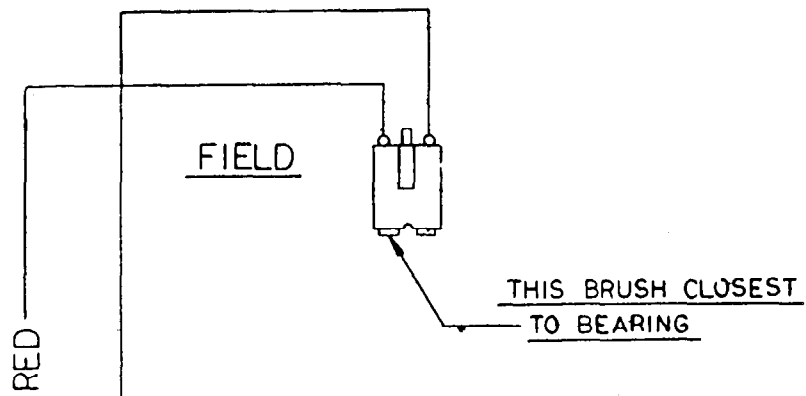
NOTE: To order an exact replacement engine, Order from METCO — part no. 43-20-1010

ALTERNATOR



Control No.  
38860

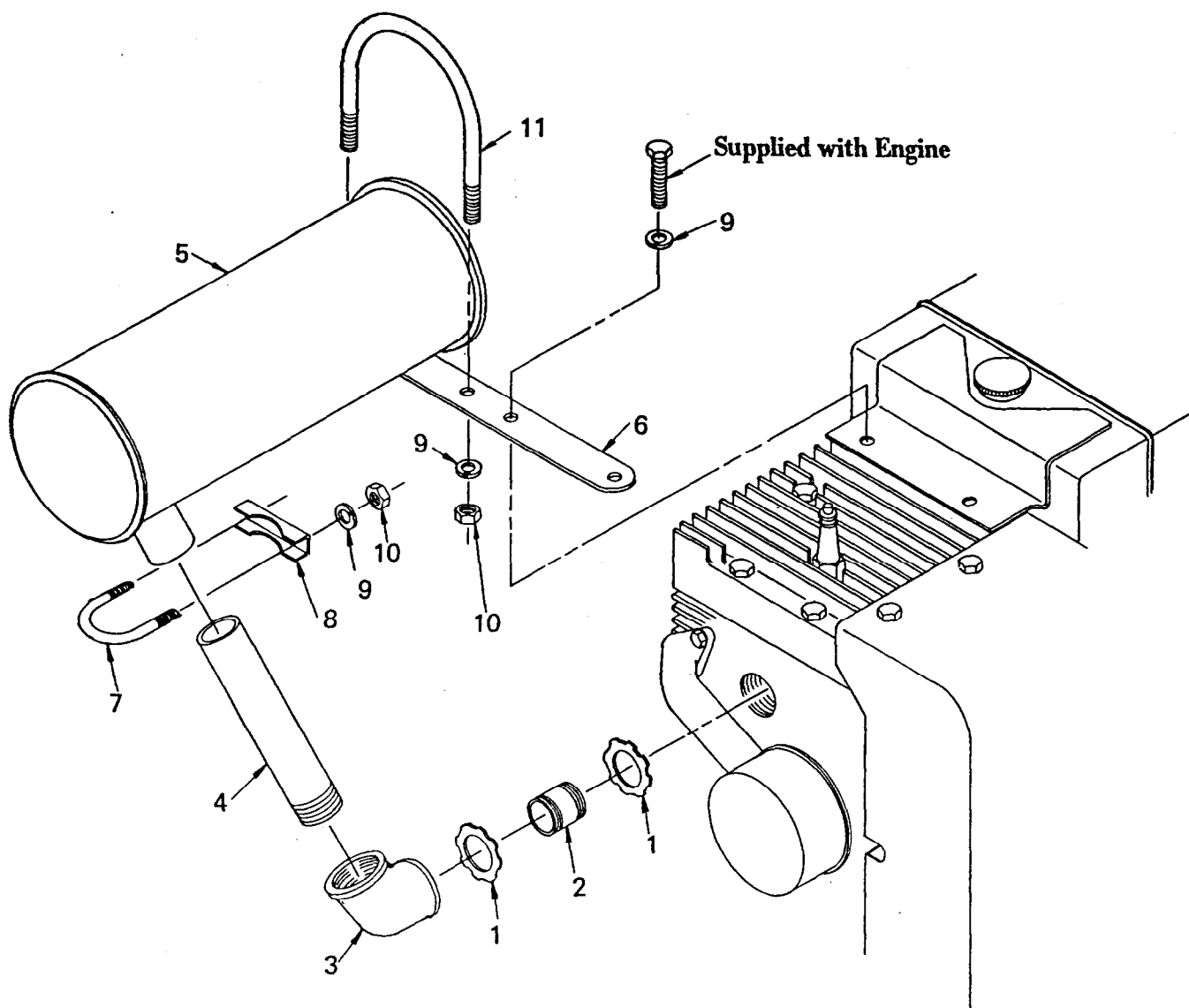
Item	Part No.	Req'd	Description
1	42-04-0470	1	Adapter Casting
2	06-75-0349	4	Hex. Hd. Cpse.
3	06-97-4100	5	Lockwasher
4	02-04-1545	1	Bearing
5	23-40-0410	1	Rotor Assembly
6	23-58-0460	1	Stator Assembly
7	45-60-0330	1	Rear Bearing Carrier
8	22-84-0400	1	Fan
9	45-88-7216	2	1/4" Wrought Flat Washer
10	06-75-0460	1	5/16-24 x 7-5/8" Lg.Stator Bolt
11	06-75-0065	4	10-32 x 7 1/2" Lg.Stator Bolt
12	06-57-3000	5	10-32 Lokut Hex Nut
13	23-33-0130	2	Parallel Blade Outlet
14	45-60-0060	1	Outlet Shield Support
15	06-97-0870	2	No. 10 Shakeproof Ext. Tooth
16	06-81-4650	2	10-32 x 3/8" Lg.Rd.Hd.Mach.Sc.
17	45-12-0180	1	Outlet Shield
18	40-50-7720	1	Spring
19	06-81-4688	1	10-32 x 2-3/4" Rd.Hd.Mach.Sc.
20	45-60-0200	1	Rectifier Support Assembly
21	06-81-0030	2	No. 10 x 3/8" Taptite
22	23-38-2550	1	Rectifier Assembly
23	22-20-0220	1	Brush Holder
24	22-18-0340	2	Brush Assembly
25	06-81-8650	2	6-32 x 1/4" Sims Sc.
26	06-81-3640	2	No. 8 x 5/8" Lg.Taptite Sc.
27	42-92-0340	1	Fan Cover
28	06-75-2400	3	No. 10 x 1/2" Lg.Taptite



WIRING DIAGRAM

Control No.  
18859

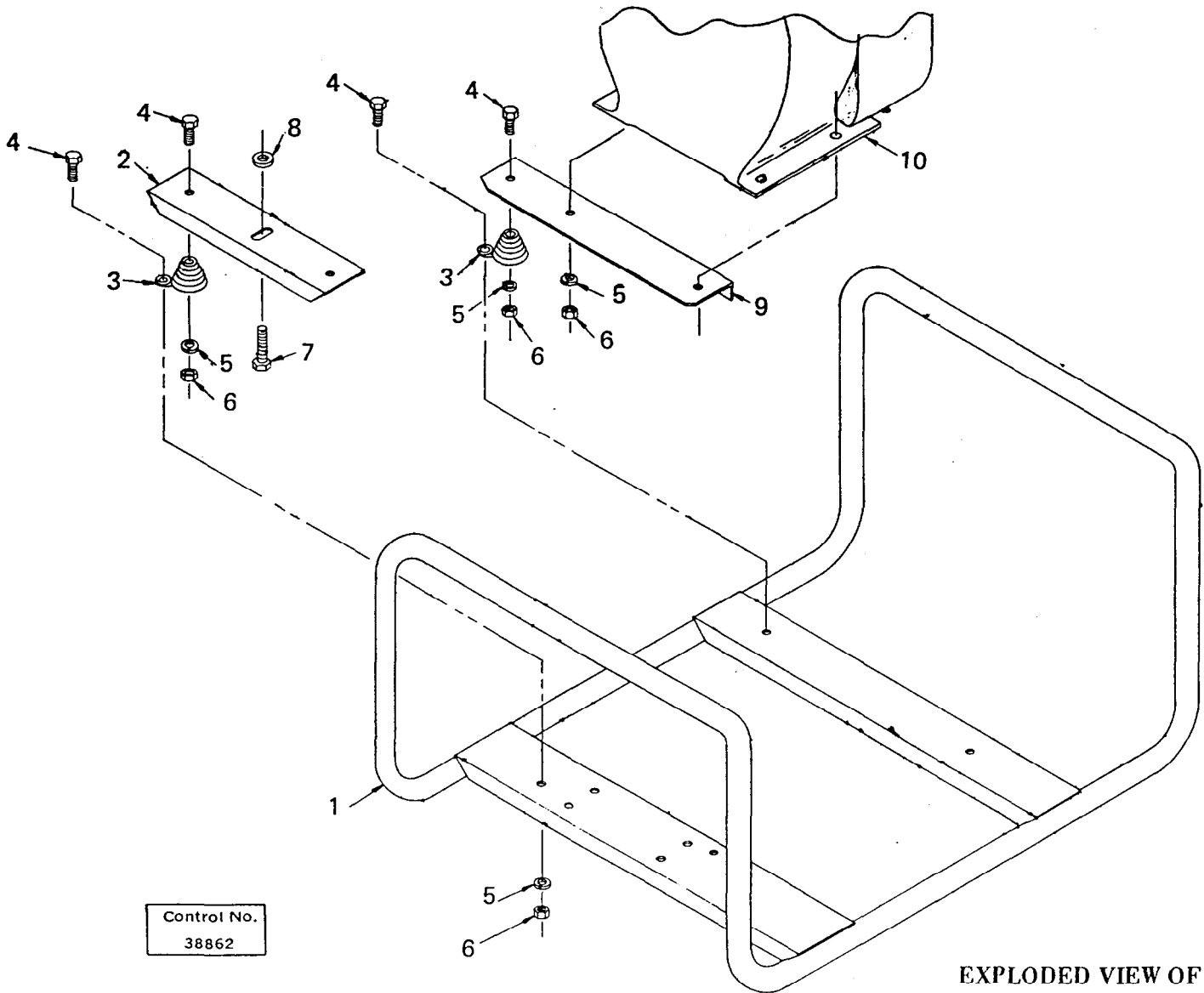
No.	Part No.	Req'd	Description
1	06-57-7475	2	3/4" Pipe Lock Nut
2	43-33-0430	1	3/4" x 2" Pipe Nipple (supplied with engine)
3	43-33-0440	1	3/4" 90° Elbow (supplied with engine)
4	43-33-0450	1	3/4" x 4" Half Nipple
5	43-31-0255	1	Muffler
6	45-60-0335	1	Muffler Support
7	42-68-0295	1	1-1/8" U Bolt
8	42-68-0300	1	1-1/8" Saddle
9	06-97-4100	6	5/16" Lockwashers
10	06-55-1980	4	5/16 - 18 Hex Nut
11	42-68-0305	1	U Bolt



EXPLODED VIEW OF  
EXHAUST SYSTEM

Control No.  
38861

No.	Part No.	Req'd	Description
1	42-20-0430	1	Mounting Base
2	42-36-0895	1	Alternator Support
3	40-50-6900	4	Spring
4	06-75-3975	6	5/16-18 x 1" Hex. Hd.Cpsc.
5	08-97-4100	8	5/16" Lockwasher
6	06-55-1980	8	5/16 - 18 Hex Nut
7	06-81-0035	1	5/16 x 1" Taptite
8	45-36-0430	1	Spacer
9	42-36-0900	1	Engine Support
10	43-20-1010	1	Engine



Control No.  
38862

EXPLODED VIEW OF  
MOUNTING BASE