



# OWNER'S MANUAL

## AHR-50 Auto Rewind Hose Reel



**JET EQUIPMENT & TOOLS, INC.**  
A WMH Company  
[www.jettools.com](http://www.jettools.com)

P.O. BOX 1349  
Auburn, WA 98071-1349  
e-mail [jet@jettools.com](mailto:jet@jettools.com)

Phone: 253-351-6000  
Fax: 1-800-274-6840  
**M-426238 09/01**

This manual has been prepared for the owner and operators of a JET AHR-50 Hose Reel. Its purpose, aside from machine operation, is to promote safety through the use of accepted correct operating and maintenance procedures. Completely read the safety and maintenance instructions before operating or servicing the hose reel. To obtain maximum life and efficiency from your hose reel, and to aid in using the hose reel safely, read this manual thoroughly and follow instructions carefully.

## **Warranty & Service**

The JET Group warrants every product it sells. If one of our tools needs service or repair, one of our Authorized Repair Stations located throughout the United States can give you quick service.

In most cases, any one of these JET Group Repair Stations can authorize warranty repair, assist you in obtaining parts, or perform routine maintenance and major repair on your JET, Performax or Powermatic tools.

For the name of an Authorized Repair Station in your area, please call 1-800-274-6848.

## **More Information**

Remember, the JET Group is consistently adding new products to the line. For complete, up-to-date product information, check with your local JET Group distributor.

## **JET Group Warranty**

The JET Group (including Performax and Powermatic brands) makes every effort to assure that its products meet high quality and durability standards and warrants to the original retail consumer/purchaser of our products that each product be free from defects in materials and workmanship as follow: 1 YEAR LIMITED WARRANTY ON ALL PRODUCTS UNLESS SPECIFIED OTHERWISE. This Warranty does not apply to defects due directly or indirectly to misuse, abuse, negligence or accidents, normal wear-and-tear, repair or alterations outside our facilities, or to a lack of maintenance.

THE JET GROUP LIMITS ALL IMPLIED WARRANTIES TO THE PERIOD SPECIFIED ABOVE, FROM THE DATE THE PRODUCT WAS PURCHASED AT RETAIL. EXCEPT AS STATED HEREIN, ANY IMPLIED WARRANTIES OR MERCHANTABILITY AND FITNESS ARE EXCLUDED. SOME STATES DO NOT ALLOW LIMITATIONS ON HOW LONG THE IMPLIED WARRANTY LASTS, SO THE ABOVE LIMITATION MAY NOT APPLY TO YOU. THE JET GROUP SHALL IN NO EVENT BE LIABLE FOR DEATH, INJURIES TO PERSONS OR PROPERTY, OR FOR INCIDENTAL, CONTINGENT, SPECIAL, OR CONSEQUENTIAL DAMAGES ARISING FROM THE USE OF OUR PRODUCTS. SOME STATES DO NOT ALLOW THE EXCLUSION OR LIMITATION OF INCIDENTAL OR CONSEQUENTIAL DAMAGES, SO THE ABOVE LIMITATION OR EXCLUSION MAY NOT APPLY TO YOU.

To take advantage of this warranty, the product or part must be returned for examination, postage prepaid, to an Authorized Repair Station designated by our office. Proof of purchase date and an explanation of the complaint must accompany the merchandise. If our inspection discloses a defect, we will either repair or replace the product, or refund the purchase price if we cannot readily and quickly provide a repair or replacement, if you are willing to accept a refund. We will return repaired product or replacement at JET'S expense, but if it is determined there is no defect, or that the defect resulted from causes not within the scope of JET'S warranty, then the user must bear the cost of storing and returning the product. This warranty gives you specific legal rights; you may also have other rights which vary from state to state.

The JET Group sells through distributors only. Members of the JET Group reserve the right to effect at any time, without prior notice, those alterations to parts, fittings, and accessory equipment which they may deem necessary for any reason whatsoever.

## Specifications

**AHR-50**

Stock # .....	426238
Hose Type .....	Reinforced Rubber
Hose Size (ID x L).....	3/8" x 50'
Working Pressure .....	300 psi
Hose Inlet Size .....	3/8" NPT
Hose Outlet Size.....	1/4" NPT
Overall Dimensions (LxWxH) .....	21"x7"x19"
Net Weight (lbs).....	47

## Table of Contents

**Page Number**

Warranty.....	2
Specifications .....	3
Table of Contents .....	3
Hose Reel Safety Precautions .....	4
Installation of Reel .....	4
Operation.....	5
Adjustment of Spring Tension .....	5
Replacement of Swivel Seal.....	5
Replacement of Hose .....	5
Spring Canister.....	5
Troubleshooting.....	6
Parts Breakdown .....	7
Parts List .....	8-9
Test Certificate .....	10
Mounting Template .....	11



The specifications in this manual are given as general information and are not binding. JET Equipment and Tools reserves the right to effect, at any time and without prior notice, changes or alterations to parts, fittings, and accessory equipment deemed necessary for any reason whatsoever.

## Hose Reel Safety Precautions



### WARNING

Exposure of skin directly to pressurized air, or fluid could result in severe bodily injury.

1. Make sure incoming line pressure does not exceed rated operating pressure for your model hose reel.
2. Use proper eye protection when assembling and using the hose reel.
3. Assemble the hose reel on a clean workbench.
4. Use soap and water when checking for leaks.
5. Keep children away from the work area.

## Installation of Reel

**For overhead ceiling mounting:** Install reel between ten and fifteen feet above the floor. You will need to purchase appropriate hardware for mounting your new reel (four 7/16" or M12 bolts, washers and nuts or four masonry bolts, or similar depending on installation).

1. The reel base has four 1/2" (or 12.7mm) drilled holes for mounting on a suitable flat surface.
2. The reel is supplied with a hose guide roller bracket. The bracket position may be changed depending on the reel mounting position. Figure 1 shows "Typical Mounting Positions". If bracket position needs to be changed, do the following:
  - Pull out some hose and let reel latch. See Operation Section: "To Latch," "To Unlatch," page 4.
  - Remove the bolts that attach the guide roller bracket to the support post.
  - Rotate guide roller bracket to correct position, replace bolts and tighten.
3. Using the four holes in the base, mount the reel in the desired location. Be sure to use appropriate hardware and tighten securely.
4. Flush hose with air or water prior to connecting to source. Apply Teflon tape or pipe sealant to supply line threads, attach to reel inlet and tighten. The other end of

incoming line can now be connected to desired supply source.

**Note:** A swivel connector and flexible inlet hose are required for supply line or warranty is void.

5. Flush some product through the system and reel prior to connecting outlet nozzle to tool. Apply Teflon tape or pipe sealant to outlet fitting on reel hose, and then attach to desired tool, or nozzle. Check connection for leakage using soapy water.
6. If hose stopper adjustment is required, pull hose from reel and allow latching at desired length. Loosen stopper screws and slide stopper to a position close to the hose guide. Tighten stopper screws, and unlatch the reel.

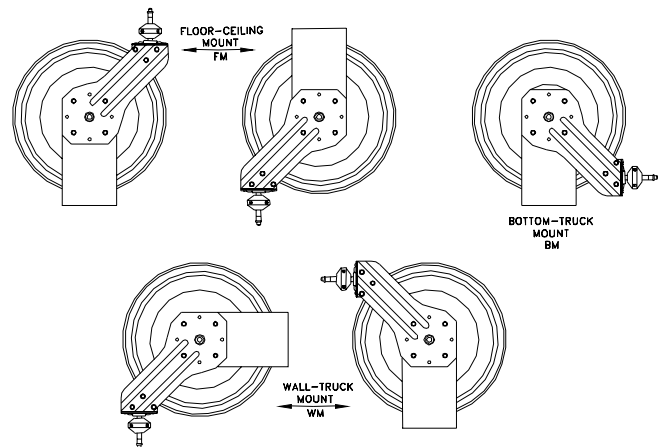


Fig. 1

## Operation

1. Check reel for correct operation by slowly pulling out the hose. A “clicking” noise will be heard every half revolution of the drum.
2. **To latch:** the reel, pull out the hose and allow it to retract after hearing the first, second, or third “click”.
3. **To unlatch:** slowly pull out the hose until the “clicking” noise stops, and then let the hose retract until the hose stop rests against the hose guide.



### **WARNING**

**Do not allow hose to retract without restraining recoil speed. Never let go of the hose when rewinding. Failure to comply may result in severe injury.**

4. Periodically check the hose condition for wear or damage, and check the swivel fitting for leakage. Replace any worn, damaged, or leaking parts.

## Adjustment of Spring Tension

1. Pull out approximately 6 feet, or 2 meters of hose and allow the drum to latch.
2. Remove hose stopper from hose, and feed hose back through guide.
3. Wrap the pulled hose one time around the drum to increase tension or un-wrap hose one time from drum to decrease tension.
4. Re-insert hose through guide, and install stopper onto hose end.
5. Pull hose from reel, and check tension. Adjust stopper if necessary.

## Replacement of Swivel Seal

1. Turn off and disconnect supply line from swivel inlet.
2. Remove swivel assembly from reel axle.
3. Remove retainer clip from swivel, and take apart.

**Note:** You may want to remove swivel from reel hose end, but this is not necessary unless a new swivel is being installed.

4. Replace the seals and reassemble swivel.
5. Use Teflon tape, or thread sealant on swivel thread fitting, reconnect the swivel thread fitting with axle.
6. Re-connect inlet supply line and use soapy water to check for leaks.

## Replacement of Hose

1. Turn off supply to reel and drain.
2. Pull out all the old hose and lock the reel in this position.



### **WARNING**

**Make sure reel drum is securely locked and cannot rotate back. Failure to comply may result in severe injury.**

3. Remove two hose clamps from hose.
4. Carefully disconnect hose from swivel joint on side of reel, or male fitting in axle center and remove old hose.
5. Use the hose guard and hose stop from the old hose and place in the same position on the new hose.
6. Feed new hose through guide and opening in drum, and connect to swivel. Use thread sealant or Teflon tape on the threads.
7. Re-install two hose clamps, on inside and outside of drum flange.
8. Carefully release the drum latch, and slowly allow the hose to wind onto the reel.

**Note:** Final spring adjustment is accomplished by adding, or removing wraps of hose around the drum. See “Adjustment of Spring Tension.”

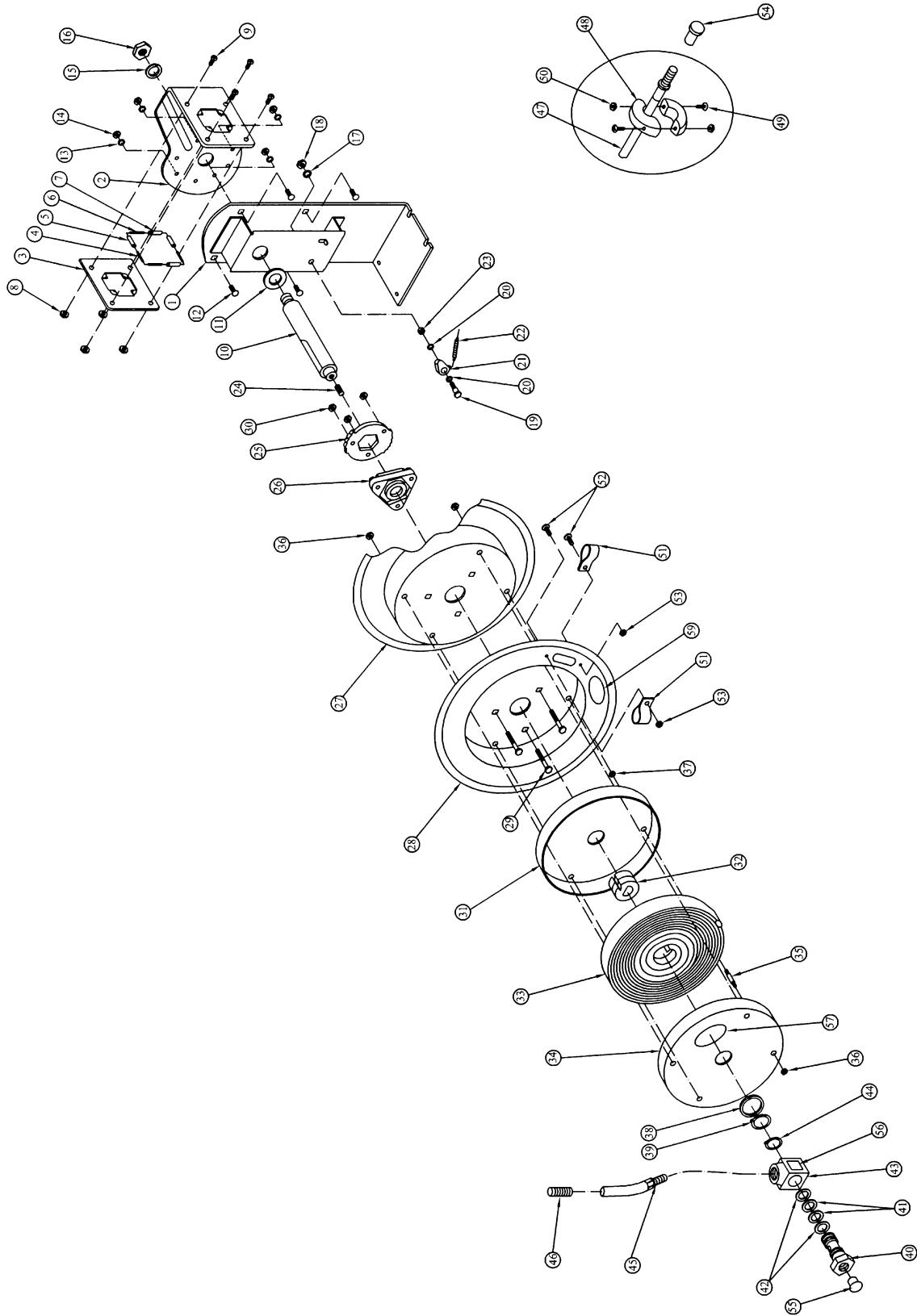
## Spring Canister

**If the rewind spring fails for any reason:** For safety reasons, the manufacturer strongly recommends the replacement of the spring canister be carried out by a JET Authorized Repair Station.

## Troubleshooting

Trouble	Cause	Remedy
<b>Hose will not fully retract</b>	<ol style="list-style-type: none"> <li>1. Outlet nozzle, gun or tool is too heavy.</li> <li>2. Spring is fatigued.</li> <li>3. Replacement hose is too long.</li> </ol>	<ol style="list-style-type: none"> <li>1. Add spring tension. See "Adjustment of Spring Tension."</li> <li>2. Add spring tension. See "Adjustment of Spring Tension." Replace spring canister if required.</li> <li>3. Call local Distributor for correct specified hose length.</li> </ol>
<b>Hose will not retract at all</b>	Spring has lost all tension or has possibly broken.	<ol style="list-style-type: none"> <li>1. Reinstall spring tension</li> <li>2. Replace spring canister. Have a JET Authorized Repair Station replace the spring canister.</li> </ol>
<b>Reel will not latch</b>	<ol style="list-style-type: none"> <li>1. Incorrect operation.</li> <li>2. Dog spring or locking cam is broken or worn.</li> </ol>	<ol style="list-style-type: none"> <li>1. Reel latches on first, second, third or fourth "click". After forth "click" it automatically rewinds.</li> <li>2. Replace dog spring or locking cam.</li> </ol>
<b>Fluid leaks from swivel</b>	Swivel seals are worn.	Replace swivel seals. See "Replacement of Swivel Seal." Be sure leak is not at hose fitting.

# Parts Breakdown for JET AHR-50



## Parts List for the AHR-50

Index No.	Part No.	Description	Size	Qty.
1	AHR50-1	Base		1
2	AHR50-2	Support Plate		1
3	AHR50-3	Guide Plate		1
4	AHR50-4	Roller Axle (long)		2
5	AHR50-5	Roller (long)		2
6	AHR50-6	Roller Axle (short)		2
7	AHR50-7	Roller (short)		2
8	AHR50-8	Nyloc Nut **	M5	4
9	AHR50-9	Pan Head Machine Screw **	M5x10	4
10	AHR50-10	Shaft		1
11	AHR50-11	Washer **		1
12	AHR50-12	Carriage Bolt **	M8x20	4
13	AHR50-13	Lock Washer **	M8	4
14	AHR50-14	Nyloc Nut **	M8	4
15	AHR50-15	Lock Washer **	M16	1
16	AHR50-16	Hex Nut **	M16	1
17	AHR50-17	Lock Washer **	M10	1
18	AHR50-18	Hex Nut **	M10	1
19	AHR50-19	Bolt	M10x43	1
20	AHR50-20	Bushing	Ø13xØ19x1.6	2
21	AHR50-21	Locking Cam		1
22	AHR50-22	Dog Spring		1
23	AHR50-23	Bushing **	Ø13xØ19x10	1
24	AHR50-24	Screw **	M10x30	1
25	AHR50-25	Locking Ring		1
26	AHR50-26	Assembly Hub Bearing		1
27	AHR50-27	Drum		1
28	AHR50-28	Drum		1
29	AHR50-29	Bolt **	M6x37	3
30	AHR50-30	Nyloc Nut **	M6	3
31		Spring Drum		1
	AHR50-31A	Spring Drum Assembly (includes: 31, 32, 33, 34, 35, 36, 37, 57)		1
32		Spring Core		1
33		Spring		1
34		Spring Drum		1
35		Bolt	M6x56	4
36	AHR50-36	Nyloc Nut **	M6	8
37	AHR50-37	Nut **	M6	4
38	AHR50-38	Washer **	Ø19.5xØ40x2	1
39	AHR50-39	Retaining Ring **	19	1
40	AHR50-40	Swivel Spool		1
41	AHR50-41	O-Ring	ASM568-210	2
42	AHR50-42	Retainer	8-210	2
43	AHR50-43	Swivel Body		1
	AHR50-43A	Swivel Assembly (includes: 38, 39, 40, 41, 42, 43, 44, 56)		1
44	AHR50-44	Retaining Ring **	25	1
45	AHR50-45	Fitting		2
46	AHR50-46	Hose Protection Spring		1
47	AHR50-47	Replacement Air Hose	3/8" x 50'	1
48	AHR50-48	Hose Stop		2
49	AHR50-49	Pan Head Machine Screw **	M6x40	2
50	AHR50-50	Hex Nut **	M6	2
51	AHR50-51	Clamp		2
52	AHR50-52	Pan Head Machine Screw **	M5x12	2



Index No.	Part No.	Description	Size	Qty.
53	AHR50-53	Nyloc Nut **	M5	2
54	AHR50-54	Plastic Cover		1
55	AHR50-55	Plastic Plug		1
56	AHR50-56	Swivel Label *		1
57	AHR50-57	Spring Drum Label *		1
59	AHR50-59	Arrow Label *		1
	AHR50-ID	JET I.D. Label (not shown)		1
	AHR50-LK	*Label Kit (includes: 56, 57, 59)		
	AHR50-HK	**Hardware Kit (includes: 8, 9, 11, 12, 13, 14, 15, 16, 17, 18, 23, 24, 29, 30, 36, 37, 38, 39, 44, 49, 50, 52, 53)		



## TEST CERTIFICATE

COMMODITY	Hose Reel
MODEL	AHR-50
SERIAL NO.	
CAPACITY	300 psi
TEST LOAD	300 psi
DATE OF INSPECTION	
JUDGEMENT	<b>PASSED</b>
INSPECTOR	

# Mounting Template

