



OWNER'S MANUAL PHR-50 Air/Water Hose Reel



JET EQUIPMENT & TOOLS, INC.
WMH Tool Group
www.jettools.com

P.O. BOX 1349
Auburn, WA 98071-1349
e-mail jet@jettools.com

Phone: 253-351-6000
Fax: 1-800-274-6840
M-426237 02/02

This manual has been prepared for the owner and operators of a JET PHR-50 Hose Reel. Its purpose, aside from hose reel operation, is to promote safety through the use of accepted correct operating and maintenance procedures. Completely read the safety and maintenance instructions before operating or servicing the reel. To obtain maximum life and efficiency from your hose reel, and to aid in using the reel safely, read this manual thoroughly and follow instructions carefully.

Warranty & Service

The JET Group warrants every product it sells. If one of our tools needs service or repair, one of our Authorized Repair Stations located throughout the United States can give you quick service.

In most cases, any one of these JET Group Repair Stations can authorize warranty repair, assist you in obtaining parts, or perform routine maintenance and major repair on your JET, Performax or Powermatic tools.

For the name of an Authorized Repair Station in your area, please call 1-800-274-6848.

More Information

Remember, the JET Group is consistently adding new products to the line. For complete, up-to-date product information, check with your local JET Group distributor.

JET Group Warranty

The JET Group (including Performax and Powermatic brands) makes every effort to assure that its products meet high quality and durability standards and warrants to the original retail consumer/purchaser of our products that each product be free from defects in materials and workmanship as follow: 1 YEAR LIMITED WARRANTY ON ALL PRODUCTS UNLESS SPECIFIED OTHERWISE. This Warranty does not apply to defects due directly or indirectly to misuse, abuse, negligence or accidents, normal wear-and-tear, repair or alterations outside our facilities, or to a lack of maintenance.

THE JET GROUP LIMITS ALL IMPLIED WARRANTIES TO THE PERIOD SPECIFIED ABOVE, FROM THE DATE THE PRODUCT WAS PURCHASED AT RETAIL. EXCEPT AS STATED HEREIN, ANY IMPLIED WARRANTIES OR MERCHANTABILITY AND FITNESS ARE EXCLUDED. SOME STATES DO NOT ALLOW LIMITATIONS ON HOW LONG THE IMPLIED WARRANTY LASTS, SO THE ABOVE LIMITATION MAY NOT APPLY TO YOU. THE JET GROUP SHALL IN NO EVENT BE LIABLE FOR DEATH, INJURIES TO PERSONS OR PROPERTY, OR FOR INCIDENTAL, CONTINGENT, SPECIAL, OR CONSEQUENTIAL DAMAGES ARISING FROM THE USE OF OUR PRODUCTS. SOME STATES DO NOT ALLOW THE EXCLUSION OR LIMITATION OF INCIDENTAL OR CONSEQUENTIAL DAMAGES, SO THE ABOVE LIMITATION OR EXCLUSION MAY NOT APPLY TO YOU.

To take advantage of this warranty, the product or part must be returned for examination, postage prepaid, to an Authorized Repair Station designated by our office. Proof of purchase date and an explanation of the complaint must accompany the merchandise. If our inspection discloses a defect, we will either repair or replace the product, or refund the purchase price if we cannot readily and quickly provide a repair or replacement, if you are willing to accept a refund. We will return repaired product or replacement at JET'S expense, but if it is determined there is no defect, or that the defect resulted from causes not within the scope of JET'S warranty, then the user must bear the cost of storing and returning the product. This warranty gives you specific legal rights; you may also have other rights which vary from state to state.

The JET Group sells through distributors only. Members of the JET Group reserve the right to effect at any time, without prior notice, those alterations to parts, fittings, and accessory equipment which they may deem necessary for any reason whatsoever.

Table of Contents

Page

Warranty.....	2
Specifications.....	3
Features.....	3
Safety Precautions.....	4
Installation of Reel.....	4
Operation.....	5
Spring Tension Adjustment.....	5
Replacing Swivel Seal.....	6
Replacing Spring Canister.....	6
Troubleshooting.....	7
Parts Breakdown.....	8
Parts List.....	9

Specifications:

PHR-50

Stock Number.....	426237
Hose Type.....	PVC
Hose Size.....	3/8" I.D. x 50' L
Working Pressure.....	300 psi
Overall Dimensions.....	17-1/2" x 18-1/2"
Net Weight.....	21 lbs.

Features

- Impact resistant, high quality polypropylene construction.
- Automatic rewind with positive latching mechanism.
- Choose free run or latching mode.
- Fully enclosed and lubricated spring driven drum.
- Non-snap rollers reduce hose wear.
- Ideal for use with air or water.



The specifications in this manual are given as general information and are not binding. JET Equipment & Tools reserves the right to effect, at any time and without prior notice, changes or alterations to parts, fittings, and accessory equipment deemed necessary for any reason whatsoever.

Hose Reel Safety Precautions

WARNING

Exposure of skin directly to pressurized air or fluid could result in severe bodily injury.

1. Make sure incoming line pressure does not exceed rated operating pressure for your model hose reel.
2. Use proper eye protection when using or servicing the hose reel.
3. Assemble the hose reel on a clean workbench.
4. Use soap and water when checking for leaks.
5. Keep children away from the work area.

Installation of Reel

For overhead ceiling mounting: Install reel at least 10 feet above the floor. You will need to purchase appropriate hardware for mounting the reel.

1. The reel base has three 13/32" (10.5mm) drilled holes for mounting on a suitable flat surface. Figure 1 shows the reel mounted to wall or ceiling.
2. Use the three holes in the base to design a template for drilling three holes in wall or ceiling. Mount the reel in the desired location. Be sure to use appropriate hardware and tighten securely.
3. Flush hose with air prior to connecting to source. Apply Teflon tape or pipe sealant to supply line threads, attach to reel inlet and tighten. The other end of incoming line can now be connected to desired supply source.
4. Apply Teflon tape or pipe sealant to outlet fitting on reel hose, then attach to desired tool or nozzle. Check connection for leakage using soapy water, also check hose reel for correct operation.
5. If hose stopper adjustment is required, pull hose from reel and allow it to latch at desired length. Loosen stopper bolts, and slide stopper to a position close to the hose guide. Tighten stopper bolts, and unlatch the reel.

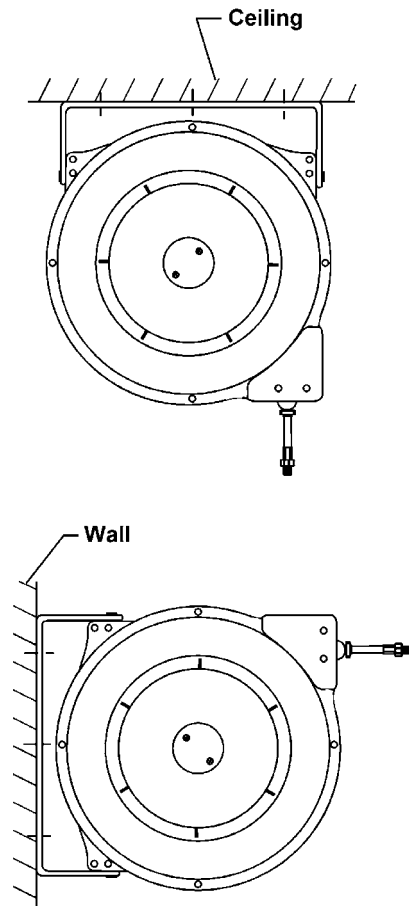


Fig. 1

Operation

1. Check reel for correct operation by slowly pulling out the hose. A “clicking” noise will be heard every half revolution of the drum.
2. To lock the reel: Pull out the hose and allow it to retract after hearing the first, second, or third “click”. Then move the slipping block (A-Fig. 2) to the lock position as shown.
3. To unlock the reel: Move the slipping block (A-Fig. 2) to the unlock position. Slowly pull out the hose until the “clicking” noise stops, and then let the hose retract until the hose stop rests against the hose guide.

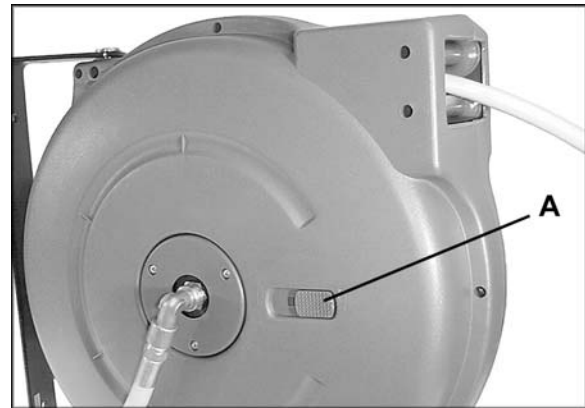


Fig. 2

WARNING

Do not allow hose to retract without restraining recoil speed. Never let go of the hose when rewinding. Failure to comply may result in severe injury.

3. Periodically check the hose condition for wear or damage, and check the swivel fitting for leakage. Replace any worn, damaged, or leaking parts.

Spring Tension Adjustment

Tools required for adjustment:

Cross point (phillips) screwdriver
13/16” socket wrench
22mm open-end (or combination) wrench

1. Disconnect inlet hose.
2. Remove the cover (A-Fig. 3) and loosen the two screws (B-Fig. 3) on the spring adjustable bushing, while holding the bushing secure with a socket wrench as shown. With the screws removed, rotate the spring adjustable bushing clockwise to increase spring tension, counterclockwise to decrease spring tension.

CAUTION

When loosening spring adjustable bushing, hold the bushing with socket wrench to prevent spring from unwinding.

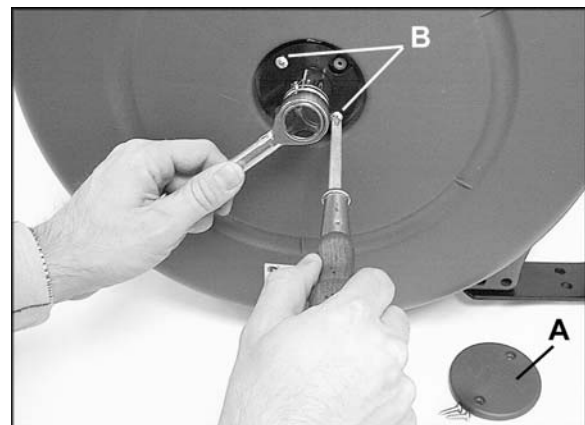


Fig. 3

3. Re-tighten screws (B-Fig. 3) and replace cover (A-Fig. 2)

Replacing Swivel Seal

1. Turn off air supply line.
2. Remove the cover (A-Fig. 4) and unscrew the fitting (B-Fig. 4) with an open-end wrench. Remove the four screws from the swivel spool (C) and pull out swivel spool.
3. Remove the O-ring from the swivel spool and install new O-ring.
4. Re-assemble spool, fitting and cover.
5. Turn on inlet supply line and use soapy water to check for leaks.

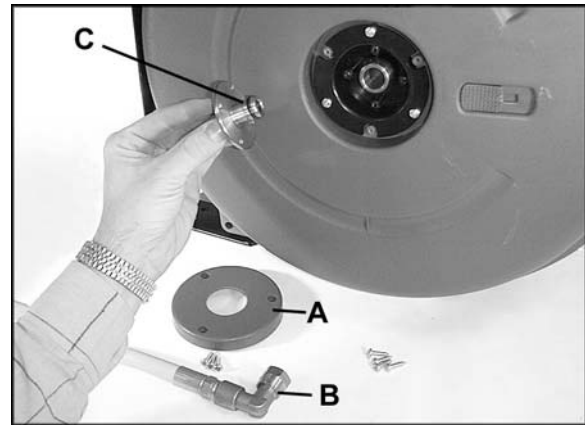


Fig. 4

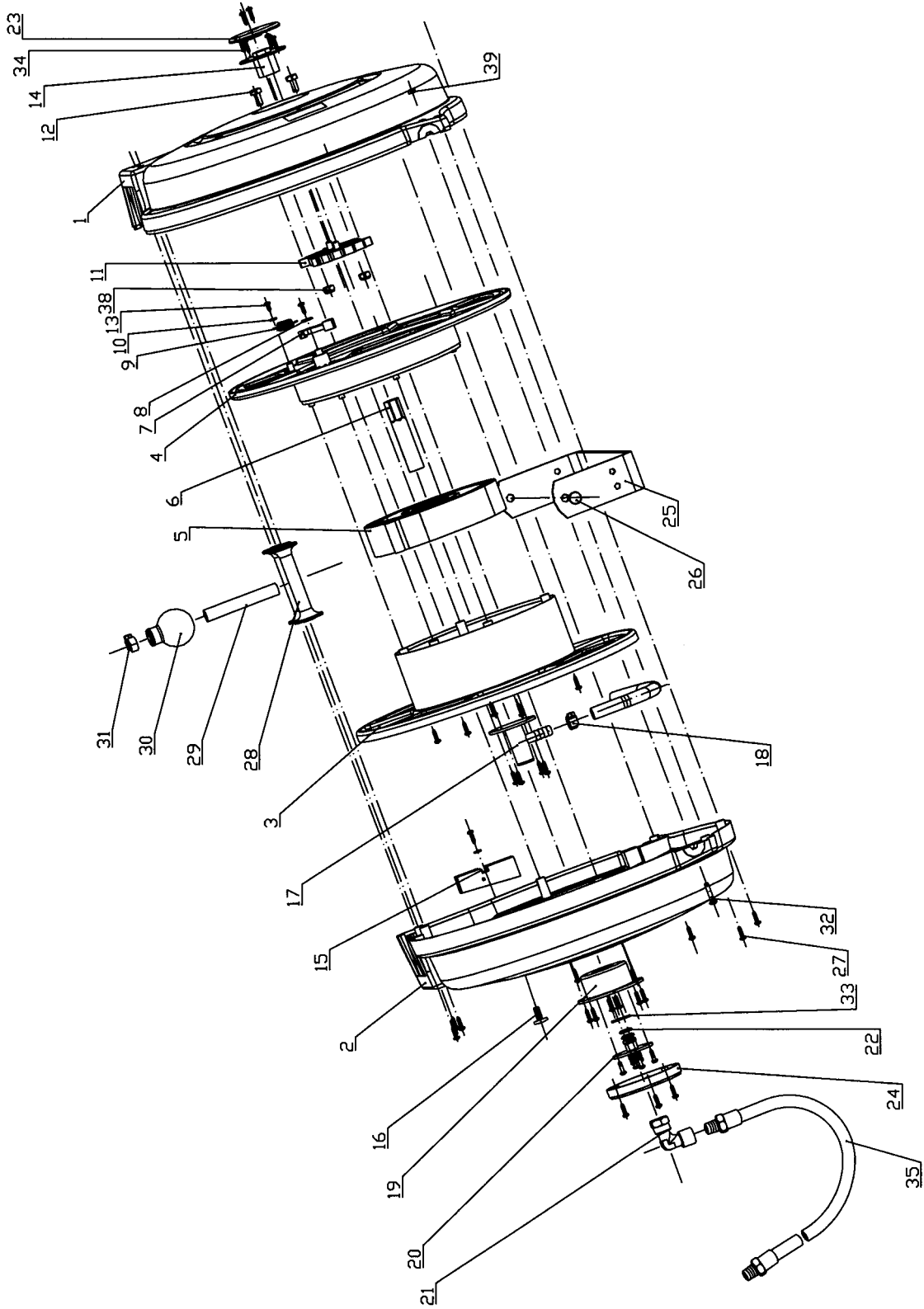
Replacing Spring Canister

If the rewind spring fails for any reason, a new spring canister can be installed. For safety reasons, the manufacturer strongly recommends the replacement of the spring canister be carried out by a JET Authorized Repair Station.

Troubleshooting

Trouble	Cause	Remedy
Hose will not fully retract	<ol style="list-style-type: none"> 1. Outlet nozzle, gun or tool is too heavy. 2. Spring is fatigued. 3. Replacement hose is too long. 	<ol style="list-style-type: none"> 1. Add spring tension. See "Spring Tension Adjustment." 2. Add spring tension. See "Spring Tension Adjustment." Replace spring canister if required. 3. Call local Distributor for correct specified hose length.
Hose will not retract at all	Spring has lost all tension or has possibly broken.	<ol style="list-style-type: none"> 1. Reinstall spring tension. 2. Replace spring canister. Have a JET Authorized Repair Station replace the spring canister.
Reel will not lock	<ol style="list-style-type: none"> 1. Incorrect operation. 2. Dog spring or locking cam is broken or worn. 	<ol style="list-style-type: none"> 1. Reel locks on first, second, third or fourth "click". After forth "click" it automatically rewinds. 2. Replace dog spring or locking cam.
Air leaks from swivel	Swivel seal is worn.	Replace swivel seal. See "Replacing Swivel Seal." Be sure leak is not at hose fitting.

PHR-50 Hose Reel Parts Breakdown



Parts List for the PHR-50 Hose Reel

Index No.	Part No.	Description	Size	Quantity
1	PHR50-1	Left Outer Casing		1
2	PHR50-2	Right Outer Casing		1
3	PHR50-3	Drum		1
4	PHR50-4	Drum		1
5	PHR50-5	Spring	0.8 x 40 x 10mm	1
6	PHR50-6	Axle		1
7	PHR50-7	Ratchet Pawl		1
8	PHR50-8	Washer	4.5mm x 15	1
9	PHR50-9	Dog Spring	1 x 10 x 26mm	1
10	PHR50-10	Washer	4.5mm x 10.5	2
11	PHR50-11	Locking Ring		1
12	PHR50-12	Bolt	M8 x 1.25P x 16L	2
13	PHR50-13	Self Tapping Screw	M4.2 x 9.5L	1
14	PHR50-14	Spring Adjustable Bushing		1
15	PHR50-15	Stop Block		1
16	PHR50-16	Slipping Block		1
17	PHR50-17	Swivel Body		1
18	PHR50-18	Hose Clip		1
19	PHR50-19	Bushing		1
20	PHR50-20	Swivel Spool		1
21	PHR50-21	Fitting		1
22	PHR50-22	O-ring	ASM568-112	1
23	PHR50-23	Cover		1
24	PHR50-24	Swivel Cover		1
25	PHR50-25	Bracket		1
26	PHR50-26	Pin		2
27	PHR50-27	Self Tapping Screw	M4.2 x 15L	35
28	PHR50-28	Roller		2
29	PHR50-29	PVC Hose	3/8" I.D. x 50' L	1
30	PHR50-30	Ball Stop		1
31	PHR50-31	Hose Clip		1
32	PHR50-32	Screw	M5 x 25	2
33	PHR50-33	Retainer		1
34	PHR50-34	Self Tapping Screw	M4.2 x 20L	4
35	PHR50-35	PVC Inlet Hose (w 3/8" NPT Male Fittings)	3/8" I.D. x 3' L	1
38	TS-1540061	Hex Nut	M8	2
39	TS-1540031	Hex Nut	M5	2