

JET[®]

Model No.:	Stock No.:
Serial No.:	
Purchased from:	
Date purchased:	

Operating Instructions and Parts Manual Hydraulic Stacker Model JHS-2200A



WALTER MEIER (Manufacturing) Inc.

427 New Sanford Road
LaVergne, Tennessee 37086
Ph.: 800-274-6848
www.waltermeier.com

Part No. M-140531
Revision B 05/2012

Copyright © 2012 Walter Meier (Manufacturing) Inc.

1.0 Warranty and Service

Walter Meier (Manufacturing) Inc., warrants every product it sells. If one of our tools needs service or repair, one of our Authorized Service Centers located throughout the United States can give you quick service. In most cases, any of these Walter Meier Authorized Service Centers can authorize warranty repair, assist you in obtaining parts, or perform routine maintenance and major repair on your JET® tools. For the name of an Authorized Service Center in your area call 1-800-274-6848.

MORE INFORMATION

Walter Meier is consistently adding new products to the line. For complete, up-to-date product information, check with your local Walter Meier distributor, or visit waltermeier.com.

WARRANTY

JET products carry a limited warranty which varies in duration based upon the product (MW = Metalworking, WW = Woodworking).

90 DAY WARRANTY	1 YEAR WARRANTY	Body Repair Kits Bottle Jacks Cable Pullers Cold Saws Hoists-Air Hoists-Electric Metal forming Mill/Drills Milling Machines MW Bandsaws MW Drill Presses MW Finishing Equipment MW Lathes MW Precision Vises	2 YEAR WARRANTY	Palet Trucks Rigging Equip. Service Jacks Stackers MW Bandsaws Surface Grinders Tapping Trolleys-Air Trolleys-Electric Web Slings Winches-Electric	3 YEAR WARRANTY	WW Benchtop Tools	5 YEAR WARRANTY	Beam Clamps Chain Hoist- Manual Lever Hoists Pullers-JCH Models Scissor Lift Tables Screw Jacks Trolleys-Geared Trolleys-Plain Winches-Manual WW Air Filtration WW Bandsaws WW Buffers	5 YEAR WARRANTY	WW Drill Presses WW Dust Collectors WW Dust Filters WW Dust Fittings WW Jointers WW Lathes WW Planers WW Sanders WW Shapers WW Tablesaws	LIFE LIFETIME WARRANTY	Fastening Tools Mechanics Hand Tools Striking Tools Vises (no -precision) Clamps
<i>Warranty reverts to 1 Year Warranty if woodworking (WW) products listed above are used for industrial or educational purposes.</i>												

WHAT IS COVERED?

This warranty covers any defects in workmanship or materials subject to the exceptions stated below. Cutting tools, abrasives and other consumables are excluded from warranty coverage.

WHO IS COVERED?

This warranty covers only the initial purchaser of the product.

WHAT IS THE PERIOD OF COVERAGE?

The general JET warranty lasts for the time period specified in the product literature of each product.

WHAT IS NOT COVERED?

Five Year Warranties do not cover woodworking (WW) products used for commercial, industrial or educational purposes. Woodworking products with Five Year Warranties that are used for commercial, industrial or education purposes revert to a One Year Warranty. This warranty does not cover defects due directly or indirectly to misuse, abuse, negligence or accidents, normal wear-and-tear, improper repair or alterations, or lack of maintenance.

HOW TO GET SERVICE

The product or part must be returned for examination, postage prepaid, to a location designated by us. For the name of the location nearest you, please call 1-800-274-6848.

You must provide proof of initial purchase date and an explanation of the complaint must accompany the merchandise. If our inspection discloses a defect, we will repair or replace the product, or refund the purchase price, at our option. We will return the repaired product or replacement at our expense unless it is determined by us that there is no defect, or that the defect resulted from causes not within the scope of our warranty in which case we will, at your direction, dispose of or return the product. In the event you choose to have the product returned, you will be responsible for the shipping and handling costs of the return.

HOW STATE LAW APPLIES

This warranty gives you specific legal rights; you may also have other rights which vary from state to state.

LIMITATIONS ON THIS WARRANTY

WALTER MEIER (MANUFACTURING) INC., LIMITS ALL IMPLIED WARRANTIES TO THE PERIOD OF THE LIMITED WARRANTY FOR EACH PRODUCT. EXCEPT AS STATED HEREIN, ANY IMPLIED WARRANTIES OR MERCHANTABILITY AND FITNESS ARE EXCLUDED. SOME STATES DO NOT ALLOW LIMITATIONS ON HOW LONG THE IMPLIED WARRANTY LASTS, SO THE ABOVE LIMITATION MAY NOT APPLY TO YOU.

WALTER MEIER SHALL IN NO EVENT BE LIABLE FOR DEATH, INJURIES TO PERSONS OR PROPERTY, OR FOR INCIDENTAL, CONTINGENT, SPECIAL, OR CONSEQUENTIAL DAMAGES ARISING FROM THE USE OF OUR PRODUCTS. SOME STATES DO NOT ALLOW THE EXCLUSION OR LIMITATION OF INCIDENTAL OR CONSEQUENTIAL DAMAGES, SO THE ABOVE LIMITATION OR EXCLUSION MAY NOT APPLY TO YOU.

Walter Meier sells through distributors only. The specifications in Walter Meier catalogs are given as general information and are not binding. Members of Walter Meier reserve the right to effect at any time, without prior notice, those alterations to parts, fittings, and accessory equipment which they may deem necessary for any reason whatsoever. JET® branded products are not sold in Canada by Walter Meier.

2.0 Table of contents

Section	Page
1.0 Warranty and Service.....	2
2.0 Table of contents.....	3
3.0 About this machine and manual.....	3
4.0 Safety warnings.....	4
5.0 Specifications.....	5
6.0 Setup and assembly.....	6
7.0 Operation.....	6
8.0 Maintenance.....	6
9.0 Troubleshooting JHS-2200A Hydraulic Stacker.....	7
10.0 Replacement Parts.....	7
10.1.1 JHS-2200A Mast Assembly – Exploded View.....	8
10.1.2 JHS-2200A Mast Assembly – Parts List.....	9
10.2.1 JHS-2200A Pump Assembly – Exploded View.....	11
10.2.2 JHS-2200A Pump Assembly – Parts List.....	12

3.0 About this machine and manual


The hydraulic stacker is designed to prevent lifting injuries by providing a stable, mobile lifting device for moderate to heavy loads. It is ideal for use in confined areas or narrow aisles.

Your hydraulic stacker is simple and easy to operate, using either the hydraulically operated foot pedal or the pallet truck style handle for additional leverage. Durable smooth rolling nylon load wheels and large diameter swivel casters make the hydraulic stacker easy to maneuver. Caster brakes are standard to prevent movement. It features a hydraulic pump with automatic overload protection, and heavy-duty welded steel frame, and with regular maintenance will provide years of dependable service.

This manual is provided by Walter Meier (Manufacturing) Inc. covering the safe operation and maintenance procedures for the JET Model JHS-2200A Hydraulic Stacker. This manual contains instructions on installation, safety precautions, general operating procedures, maintenance instructions and parts breakdown.

If there are questions or comments, please contact your local supplier or Walter Meier. Walter Meier can also be reached at our web site: www.waltermeier.com.

Retain this manual for future reference. If the stacker transfers ownership, the manual should accompany it.

 **WARNING Read and understand the entire contents of this manual before attempting assembly or operation! Failure to comply may cause serious injury!**



4.0 Safety warnings

1. Read and understand all warnings and operating instructions before attempting to use the stacker.
2. Replace warning labels if they become obscured or removed.
3. Do not exceed rated capacity. Excessive load can cause tipping or loss of control.
4. Do not exceed load center capacity of stacker. Load center is measured horizontally from back of forks or platform. See *Figure 1*. The load center (A) is 20-inches on the JHS-2200A Stacker.
5. Overall length of load must never be more than twice the load center capacity.
6. Do not allow anyone to sit or ride on fork, or enter area beneath forks.
7. Always keep fingers, hands and feet clear of forks and mast when lowering load.
8. Always secure load before raising or moving the stacker.
9. Do not allow more than half of load to extend beyond load center of stacker.
10. Always keep load close to mast.
11. Do not transport load in raised position.
12. Use on level, smooth, finished floors only. Do not use on uneven or sloping floors.
13. Pull pump release lever slowly to allow load to descend in a controlled manner.
14. Always use genuine factory replacement parts only.
15. Failure to comply with all of these warnings may result in tipping, loss of control and load, damage to hydraulic stacker, personal injury and/or property damage.

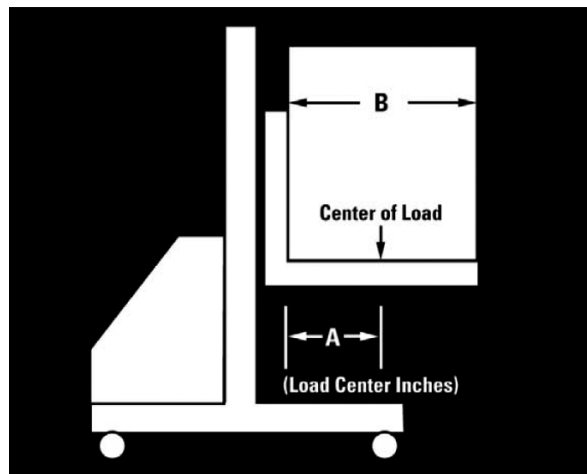


Figure 1

Familiarize yourself with the following safety notices used in this manual:



This means that if precautions are not heeded, it may result in minor injury and/or possible machine damage.



This means that if precautions are not heeded, it may result in serious injury or possibly even death.

5.0 Specifications

Model number JHS-2200A
Stock number 140531

Capacities and forces:

Load capacity 2200lb (998kg)
Pallet capacity 48" x 40" (1219 x 1016mm)
Load center 20" (508mm)
Maximum lift height 62" (1575mm)
Minimum fork height 2-3/4" (70mm)
Handle force required at maximum load 85 lb (39kg)
Turning radius 360°/50" (1270mm)
Handle strokes to maximum height (no load / max. load) 44 / 86
Foot pedal strokes to maximum height (no load / max. load) 30 / 60

Dimensions:

Fork size 42"L x 5-1/4"W x 2-1/4"H (1067 x 133 x 57mm)
Overall fork width (min./max.) 11" / 27-1/2" (279 / 700mm)
Outrigger width 4" (102mm)
Outrigger height 3-1/2" (90mm)
Outrigger inside width (min./max.) 34-1/4" / 50-1/2" (870 / 1283mm)
Outrigger outside width (min./max.) 42" / 58-3/4" (1067 / 1492)
Stacker overall size 62"L x 42"W x 78"H (1575 x 1067 x 1981mm)

Wheels:

Load wheel material and size Black nylon / 5"OD x 3-1/4"W (127 x 83mm)
Caster material and size Poly/Aluminum / 7"OD x 2"W (178 x 51mm)
Caster locks yes

Net weight 528 lb (240kg)
Shipping weight 558 lb (253kg)

The specifications in this manual were current at time of publication, but because of our policy of continuous improvement, Walter Meier (Manufacturing) Inc., reserves the right to change specifications at any time and without prior notice, without incurring obligations.

6.0 Setup and assembly

Number in parentheses refers to corresponding number in parts breakdown.

1. Remove all packing material from stacker.
2. To assemble forks, remove one of the snap rings (#5). Tap fork shaft out (#6). Forks to be assembled must come from the same crate as the mast.
3. Align holes in forks (#1) with holes in carriage (#4) and tap fork shaft through carriage and fork holes.
4. Reinstall snap ring (#5) to hold fork shaft in place.
5. Be sure assembled forks are even and parallel. Use adjusting screws (#3) if correction is needed.
6. To assemble outrigger legs, make sure legs to be assembled come from the same crate as the mast.
7. Insert outrigger legs (#24A and #24B) into tube openings in bottom of mast (#18). Align holes in legs with holes in mast to enable legs to be equal distance from mast. Legs should slide into tube openings easily without force.
8. Fasten legs with four screws, four lock washers four flat washers, and four hex nuts (#25-27, and 33). Tighten hex nuts firmly.
9. **IMPORTANT:** The hydraulic cylinder comes with a shipping plug installed (#106). Before operating the stacker, remove this shipping plug and install breather plug (included in packaging provided with stacker) in its place.

⚠WARNING Do not exceed rated load and load center capacities. Excessive load can cause tipping or loss of control. Use on finished, smooth and level floors only; do not use on slopes.

7.0 Operation

1. Insert both forks evenly and completely under load. Load must be distributed equally on both forks and centered toward the mast. Do not allow more than half the load to extend beyond load center. Do not lift load with fork tips only and do not lift unstable or loose load.
2. Press the foot pedal or push the pump handle downwards (handle lever must be in lower position) to raise the forks by one stroke. Continue to pump the pedal, or handle, until desired height is reached. Do not exceed maximum lifting height.
3. To lower forks, pull the pump release lever on handle slowly to allow the load to lower in a cautious and controlled manner.
4. To move stacker with load, lower forks carefully. Use both hands with a firm grip to push and steer the stacker on level, smooth finished floors only. Keep all people clear from stacker while lifting, lowering and moving load.

⚠CAUTION When not in use, do not allow heavy loads to remain on the forks for an extended period of time. Always lower forks when not in use.

8.0 Maintenance

For optimum performance, the drive chain (#37) should be lubricated with chain oil regularly.

Always store the hydraulic stacker without load, and forks in lowest position.

Periodically check oil level in cylinder. Replenish as needed with hydraulic jack oil through the oil plug (#106)

Keep pivot points and metal-to-metal contact points lubricated.

9.0 Troubleshooting JHS-2200A Hydraulic Stacker

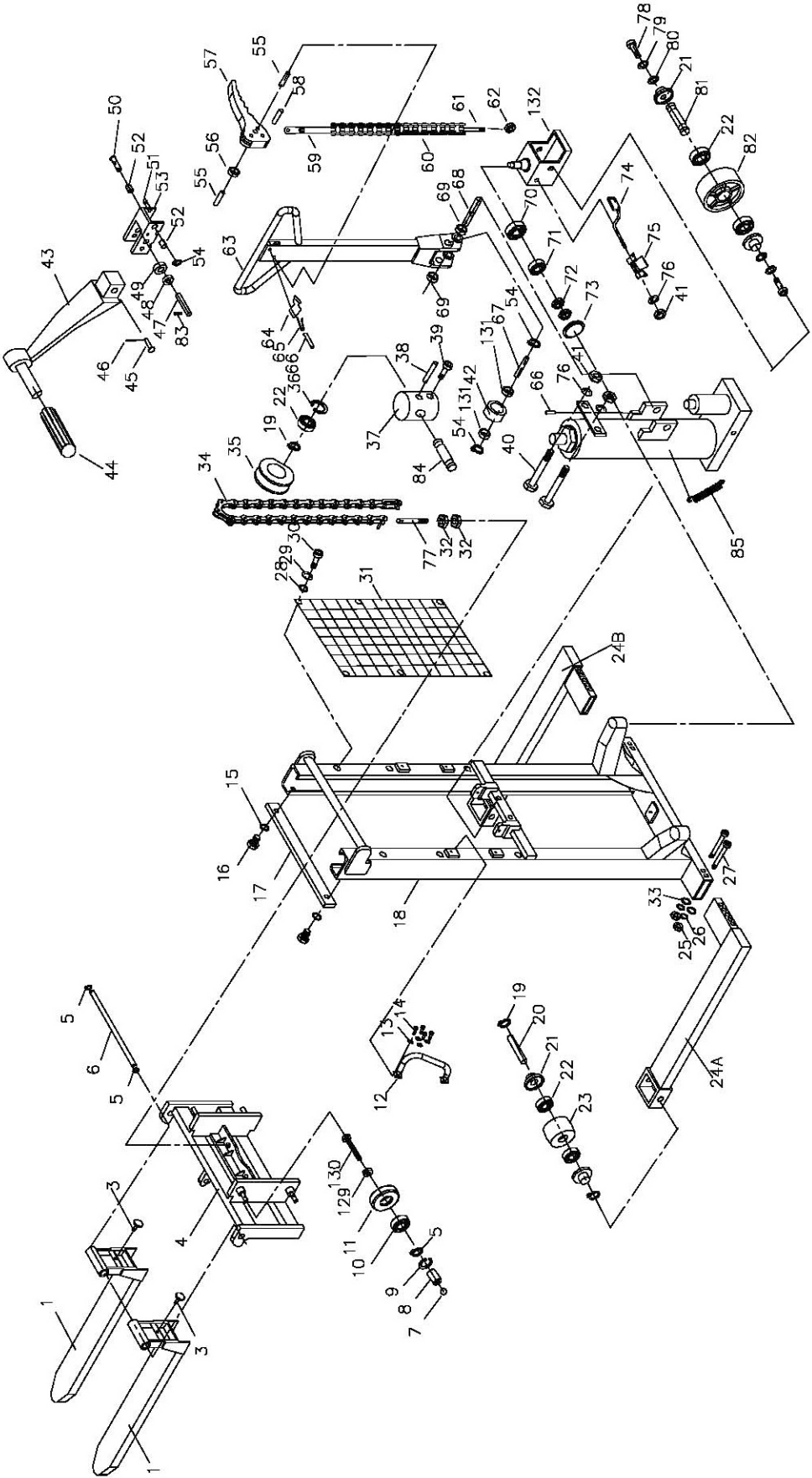
Number in parentheses refers to corresponding number in parts breakdown, section 10.1.1

Trouble	Probable Cause	Remedy
Fork will not lift to maximum height.	Hydraulic oil level is low.	Fill with hydraulic oil.
Fork will not rise.	Oil level is low, or oil is too viscous.	Fill with oil, or change oil.
	Oil has impurities.	Change oil.
	Hex nut (#62) is too high, keeping the pumping valve open.	Adjust hex nut properly.
	Air in hydraulic pump.	Release air from system by pulling up pump release lever, then pumping handle up and down several times.
Fork cannot be lowered.	The lifting piston is deformed, resulting from overloading.	Replace piston.
	The fork was kept in high position for extended period, resulting in rusting and jamming of the exposed piston rod.	Keep fork in lowest position when not in use. Keep piston well lubricated.
	Adjustment nut (#62) not in correct position.	Adjust nut properly.
	Fork frame and roller sprocket are jammed.	Correct jam; replace bearing if necessary.
Hydraulic fluid leak.	Sealing parts worn or damaged.	Replace parts.
	Some parts cracked or worn.	Replace parts.
The fork descends without the release valve working.	Release valve unable to close properly due to impurities in hydraulic oil.	Replace with new oil.
	Hydraulic system cracked or bored.	Inspect and replace the waste parts.
	Air in the oil.	Release air from system by pulling up pump release lever, then pumping handle up and down several times.
	Seal parts worn or damaged in hydraulic pump.	Replace worn or damaged parts.
	Adjustment nut (#62) not in correct position.	Adjust nut properly.

10.0 Replacement Parts

To order parts or reach our service department, call 1-800-274-6848 Monday through Friday (see our website for business hours, www.waltermeier.com). Having the Model Number and Serial Number of your machine available when you call will allow us to serve you quickly and accurately.

10.1.1 JHS-2200A Mast Assembly – Exploded View

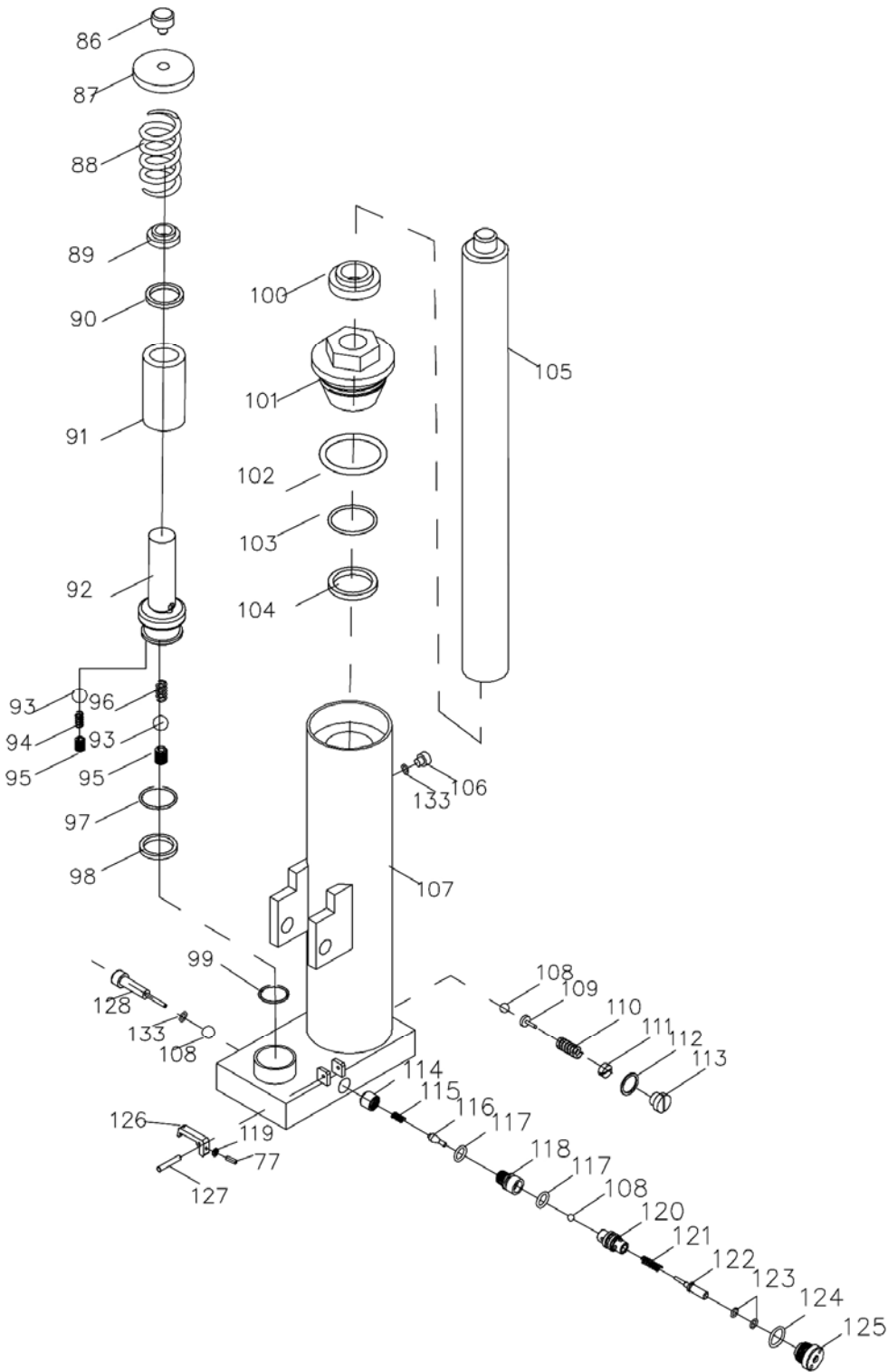


10.1.2 JHS-2200A Mast Assembly – Parts List

Index No	Part No	Description	Size	Qty
1	JHS2200-1	Fork		2
3	JHS1100-2	Adjusting Screw		2
4	JHS2200A-4	Mounting Plate		1
5	JHS2200A-5	Snap Ring	30mm	6
6	JHS2200A-6	Fork Shaft		1
7	SB-14MM	Steel Ball	14mm	4
8	JHS2200A-8	Steel Ball Housing		4
9	JHS2200A-9	Snap Ring	62mm	4
10	BB-6206ZZ	Ball Bearing	6206-2Z	4
11	JHS2200A-11	Guide Roller		4
12	JHS1100-13A	Rubber Grip Handle		2
13	TS-1551041	Lock Washer	6mm	16
14	TS-1503021	Socket Head Cap Screw	M6x10	16
15	TS-1551061	Lock Washer	8mm	2
16	TS-1504011	Socket Head Cap Screw	M8x10	2
17	JHS2200-17	Bar		1
18	JHS2200-18	Mast		1
19	JHS1100-17	Snap Ring	20mm	4
20	JHS2200-20	Front Wheel Axle		2
21	JHS1100-18	Dust Cap		8
22	BB-6204ZZ	Ball Bearing	6204-2Z	10
23	JHS1100-20	Front Wheel		2
24A	JHS2200-24A	Left Outrigger Leg		1
24B	JHS2200-24B	Right Outrigger Leg		1
25	TS-154010	Hex Nut	M16	4
26	TS-155110	Lock Washer	16mm	4
27	JHS2200A-27	Hex Head Bolt	M16x140	4
28	TS-1550031	Flat Washer	5mm	6
29	TS-1551031	Lock Washer	5mm	6
30	TS-1502031	Socket Head Cap Screw	M5x12	6
31	JHS2200-31	Steel Fence		1
32	TS-2310181	Hex Nut	M18	4
33	TS-155010	Flat Washer	16mm	4
34	JHS1100-35	Chain	05B-1x15mm	2
35	JHS1100-59	Chain Wheel		2
36	JHS1100-11	Snap Ring	47mm	2
37	JHS1100-60	Chain Wheel Bracket		1
38	JHS1100-61	Spring Pin	Ø8x50mm	1
39	TS-1503021	Socket Head Cap Screw	M6x10	1
40	TS-1490051	Hex Cap Screw	M8x30	2
41	TS-1541031	Nylon Lock Hex Nut	M8	4
42	JHS1100-65	Roller		1
43	JHS1100-42	Foot Pedal		1
44	JHS2200A-44	Rubber Grip		1
45	JHS2200A-45	Clevis Pin	8x40mm	1
46	JHS2200A-46	Cotter Pin	2.5x12mm	1
47	JHS1100-45	Roller Pin		1
48	JHS1100-46	Bushing	1715	1
49	JHS1100-47	Roller		1
50	JHS1100-51	Roller Axle		1
51	JHS2200A-51	Spring Pin	4x10mm	2
52	JHS1100-49	Bushing	1608	2
53	JHS1100-50	Foot Lever		1
54	JHS2200A-54	Snap Ring	16mm	3
55	JHS1100-52	Spring Pin	Ø4x22mm	2

Index No	Part No	Description	Size	Qty
56	JHS1100-53	Roller		1
57	JHS1100-54	Lever		1
58	JHS1100-55	Spring Pin	Ø6x30mm	1
	JHS2200A-RCA	Release Chain Assembly (includes #59 thru 61)		1
59	JHS2200A-59	Release Rod		1
60	JHS2200A-60	Chain		1
61	JHS2200A-61	Anchor Bolt		1
62	TS-1541011	Nylon Lock Hex Nut	M5	1
63	JHS1100-56A	Handle		1
64	JHS1100-57	Blocking Spring		1
65	JHS2200A-65	Spring		1
66	JHS1100-58	Spring Pin	Ø4x30mm	3
67	JHS1100-66	Shaft		1
68	JHS1100-64	Handle Pin		1
69	JHS2200A-69	Bushing	18x16x15mm	2
70	JHS2200A-70	Ball Bearing	32906	2
71	BB-6005	Ball Bearing	6005	2
72	JHS2200A-72	Hex Nut	M18	4
73	JHS2200A-73	Dust Cap		2
74	JHS1100-75	Foot Brake		2
75	JHS1100-76	Stop Lug		2
76	TS-1550061	Flat Washer	8mm	4
77	JHS2200A-77	Anchor Bolt		2
78	JHS2200A-78	Hex Cap Screw	M14x15	4
79	TS-2361141	Lock Washer	14mm	4
80	TS-155009	Flat Washer	14mm	4
81	JHS1100-83N	Wheel Axle		2
82	JHS1100-85N	Wheel		2
83	JHS1100-44	Spring Pin	Ø3x30mm	1
84	JHS1100-63	Shaft		1
85	JHS1100-69	Spring		1
129	TS-1540081	Hex Nut	M12	4
130	TS-1492051	Hex Cap Screw	M12x50	4
131	JHS2200A-131	Bushing		2
132	JHS1100-72A	Wheel Cover		2
	PT2748J-JET	JET Logo Label	2-5/8" x 7-1/2"	2
	JHS2200A-ID	ID/Warning Label		1
	JWS-FW	Fork Warning Label		2
	JWS-LCW	Load Center Warning Label		1

10.2.1 JHS-2200A Pump Assembly – Exploded View



10.2.2 JHS-2200A Pump Assembly – Parts List

Index No	Part No	Description	Size	Qty
	JHS2200A-PA	Pump Assembly (includes #86-133)		1
86	JHS1100-86	Bolt		1
87	JHS1100-87	Spring Cap		1
88	JHS1100-88	Spring		1
89	JHS1100-89	Dust Seal *	20x28x6mm	1
90	JHS1100-90	U-Ring *	20x28x5mm	1
91	JHS1100-91	Pump		1
92	JHS2200A-92	Plunger Piston		1
93	SB-4MM	Steel Ball	4mm	2
94	JHS1100-96	Spring		1
95	JHS1100-95	Adjusting Screw		2
96	JHS1100-94	Spring		1
97	JHS1100-98	Back-Up Ring *	18x24x1.25mm	1
98	JHS1100-99	U-Ring *	18x25x5mm	1
99	JHS1100-110	Washer		1
100	JHS1100-111	Dust Seal *	32x40x5.5mm	1
101	JHS1100-112	Cover		1
102	JHS1100-113	O-Ring *	63x3.55mm	1
103	JHS1100-114	O-Ring *	31.5x3.55mm	1
104	JHS1100-115	U-Ring *	32x40x5.5mm	1
105	JHS1100-116	Ram Piston		1
106	JHS1100-117	Oil Plug	M8x10	1
107	JHS2200A-107	Pump Body		1
108	SB-6MM	Steel Ball	6mm	2
109	JHS1100-120	Spring Base		1
110	JHS1100-121	Spring		1
111	JHS1100-122	Adjusting Screw		1
112	JHS2200A-112	O-Ring *	11.6x2.4mm	1
113	JHS1100-123	Relief Plug		1
114	JHS2200A-114	Bushing		1
115	JHS2200A-115	Spring		1
116	JHS2200A-116	Valve Stem		1
117	JHS1100-107	O-Ring *	13.2x2.65mm	2
118	JHS2200A-118	Valve Housing		1
119	TS-1540061	Hex Nut	M8	1
120	JHS2200A-120	Coupler		1
121	JHS2200A-121	Spring		1
122	JHS2200A-122	Valve Stem		1
123	JHS2200A-123	O-Ring *	7.5x1.8mm	2
124	JHS2200A-124	O-Ring *	19x2.65mm	1
125	JHS2200A-125	Release Plug		1
126	JHS2200A-126	Cam		1
127	JHS1100-43A	Spring Pin	Φ8x45mm	1
128	JHS2200A-128	Screw	M8x50	1
133	JHS2200A-133	O-Ring *	5.7x1.9mm	2
	JHS2200A-RK	Pump Repair Kit (includes items marked with *)		