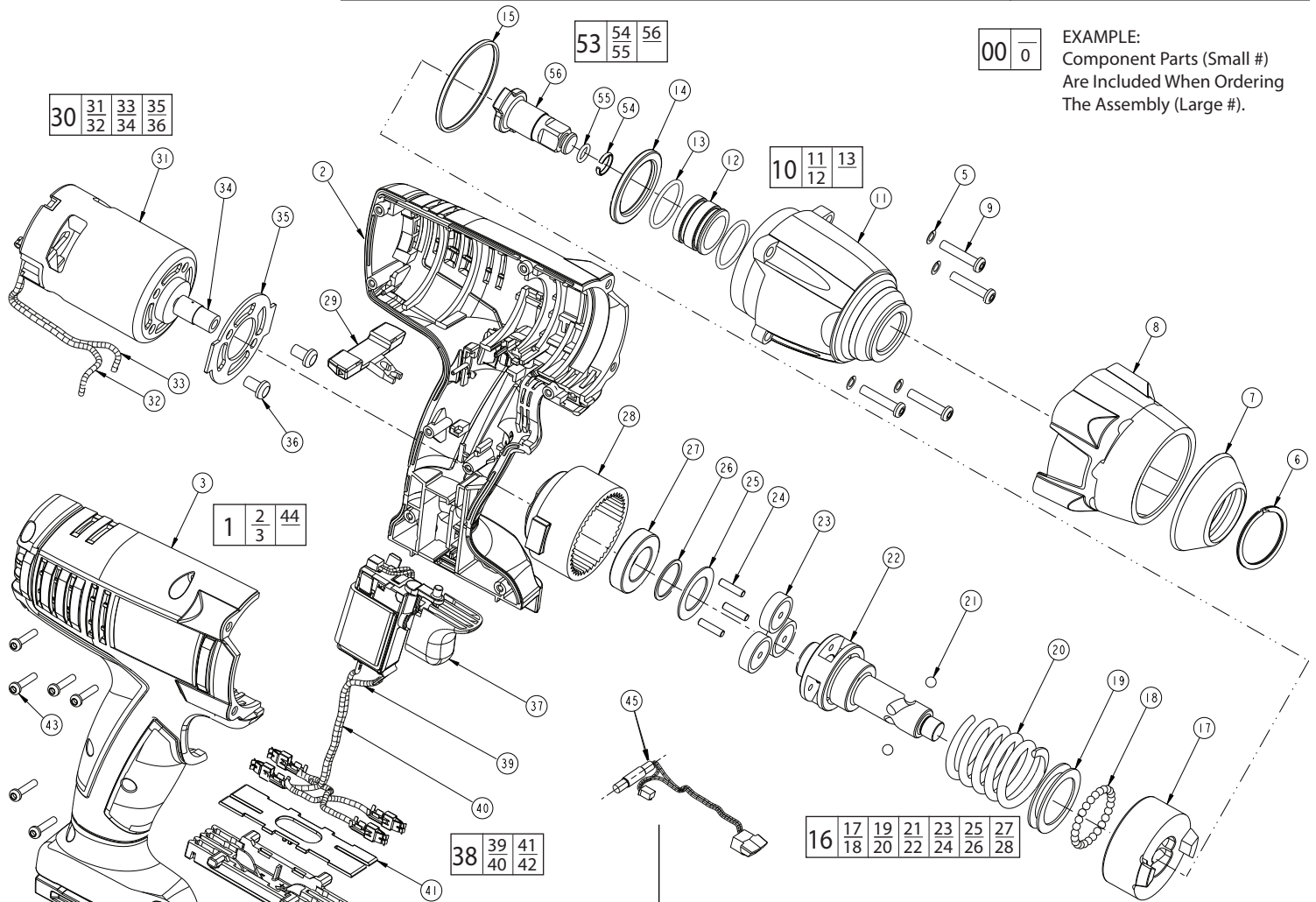




SERVICE PARTS LIST

BULLETIN NO.
54-26-0890

SPECIFY CATALOG NO. AND SERIAL NO. WHEN ORDERING PARTS		REVISED BULLETIN	DATE
1/2" Square Impact Wrench			Jan. 2008
CATALOG NO. 0883-20	STARTING SERIAL NO. B24A	WIRING INSTRUCTION SEE REVERSE SIDE	

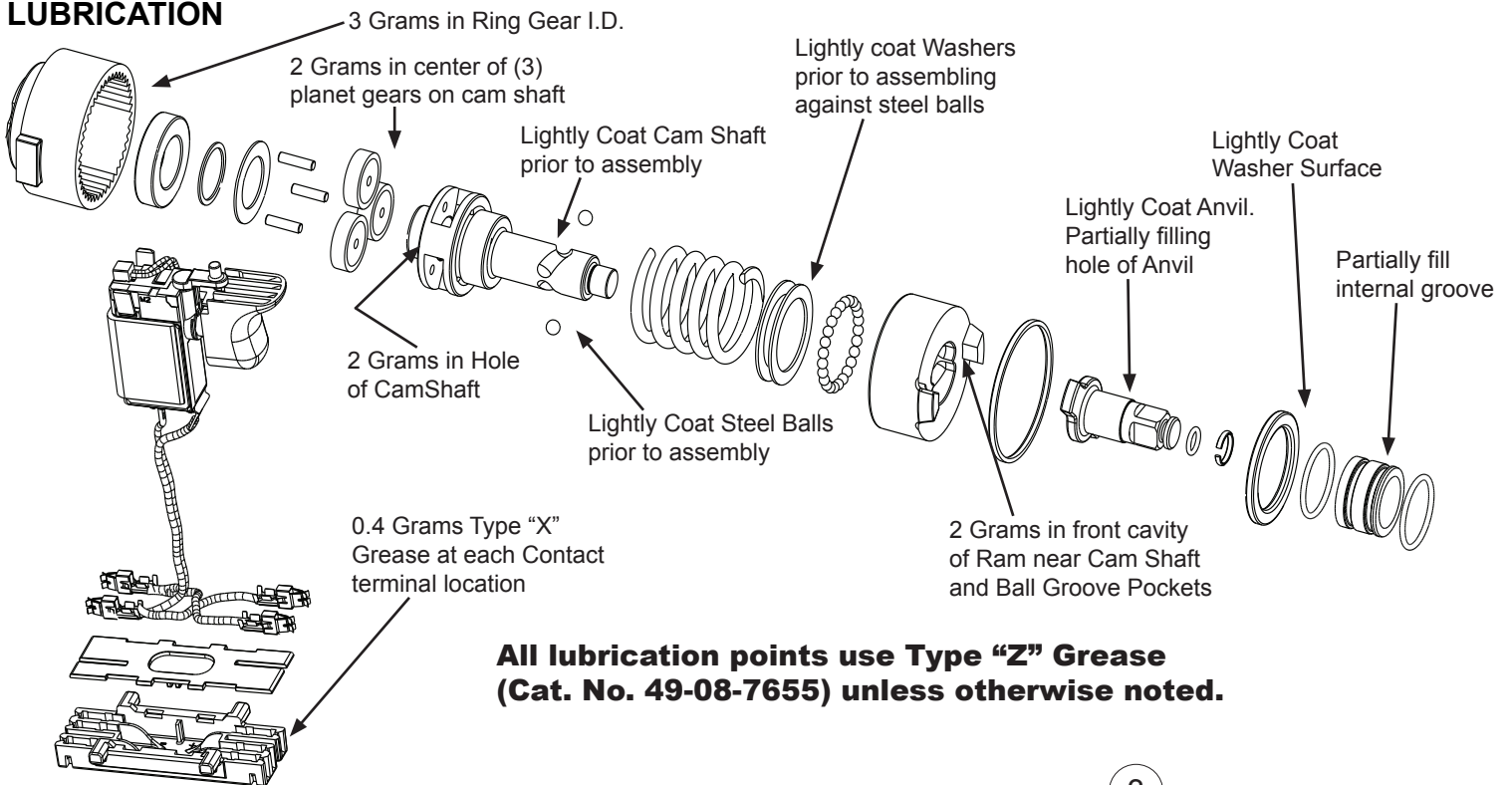


EXAMPLE:
Component Parts (Small #)
Are Included When Ordering
The Assembly (Large #).

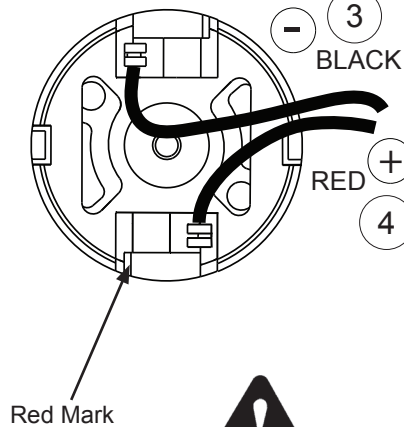
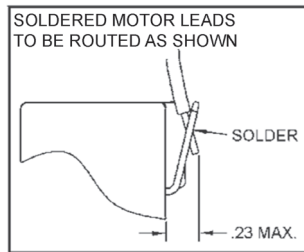
FIG.	PART NO.	DESCRIPTION OF PART	NO. REQ.
★ 1	31-44-2261	Handle Assembly	(1)
2	-----	Left Handle Half	(1)
3	-----	Right Handle Half	(1)
★ 5	45-88-1195	Split Lock Washer	(4)
6	34-60-0740	Retaining Ring	(1)
7	31-12-0400	Boot Nut	(1)
8	31-15-0710	Front Housing Cover	(1)
9	06-82-1030	Screw (#8 - 18 x 24 mm)	(4)
10	28-50-0625	Front Housing Assembly	(1)
11	-----	Front Housing	(1)
12	-----	Bushing	(1)
13	-----	O-Ring	(2)
14	45-88-1930	Washer	(1)
15	44-90-0870	O-Ring	(1)
16	14-30-0900	Gear Box Assembly	(1)
17	44-82-0250	Ram	(1)
18	02-02-0170	Ball (3.5 mm Dia.)	(25)
★ 19	45-88-1910	Washer	(2)
20	40-50-1460	Compression Spring	(1)
21	02-02-2050	Ball (3/16 "Dia.)	(2)
22	42-50-0400	Cam Shaft	(1)
23	32-62-0350	Planet Gear	(3)
24	44-60-1100	Planet Gear Pin	(3)
25	45-88-1870	Washer	(1)
26	45-88-1920	Washer	(1)

FIG.	PART NO.	DESCRIPTION OF PART	NO. REQ.
27	02-04-0785	Ball Bearing	(1)
28	32-65-0170	Ring Gear	(1)
29	42-42-0215	Forward/Reverse Button	(1)
30	14-50-0825	Motor Assembly	(1)
31	-----	Motor	(1)
32	-----	Leadwire Assembly (Red)	(1)
33	-----	Leadwire Assembly (Black)	(1)
34	32-60-1350	Motor Pinion	(1)
35	44-34-0380	Motor Mount	(1)
36	06-82-1000	Screw (M5x6)	(2)
37	23-66-1080	Switch Assembly	(1)
38	22-56-1210	Connector Block Assembly	(1)
39	-----	Leadwire Assembly (Red)	(1)
40	-----	Leadwire Assembly (Black)	(1)
41	-----	Connector Block Cover	(1)
42	-----	Connector Block	(1)
43	06-82-2630	Screw	(8)
45	23-94-0450	LED Assembly	(1)
53	14-73-0375	1/2" Anvil Assembly	(1)
★ 54	44-90-0900	1/2" Hog Ring	(1)
★ 55	44-90-0875	O-Ring	(1)
56	-----	1/2" Anvil	(1)
57	12-20-3460	Service Nameplate (not shown)	(1)

LUBRICATION

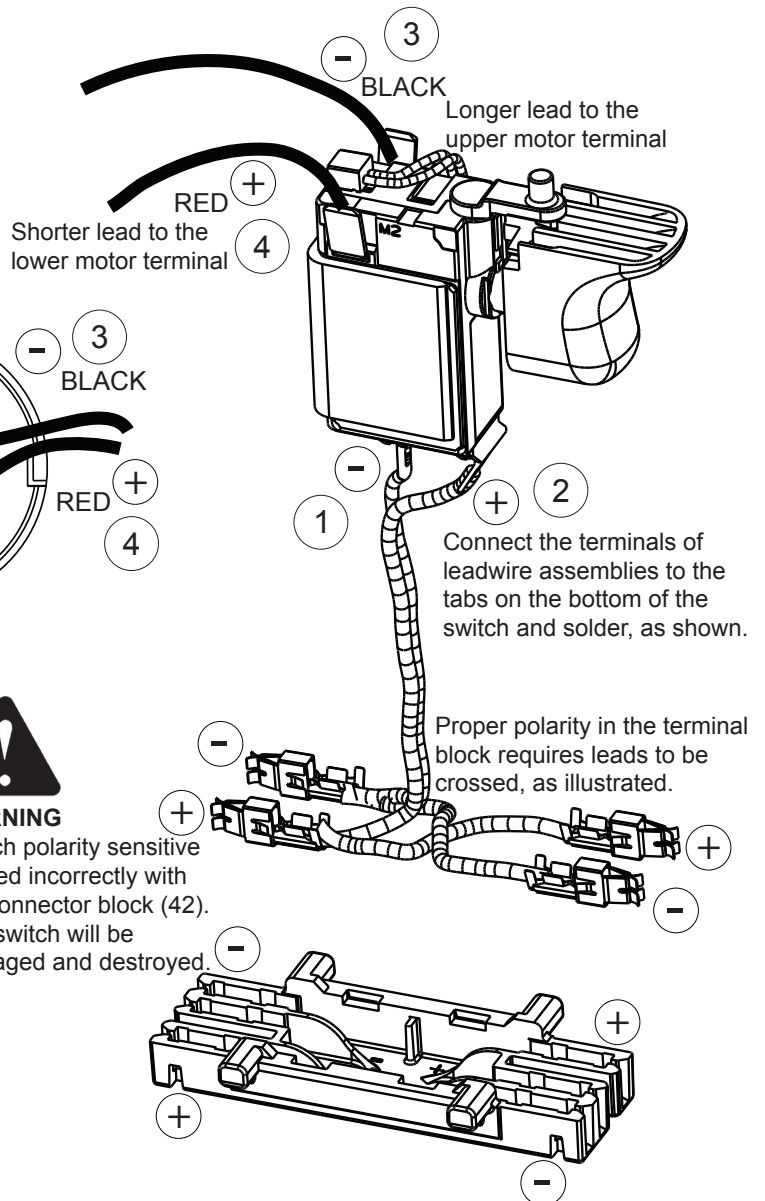


WIRING INSTRUCTIONS



WARNING

Switch polarity sensitive if wired incorrectly with the connector block (42). The switch will be damaged and destroyed.



WIRING SPECIFICATIONS				
Wire No.	Wire Color	Origin or Gauge	Length	Terminals, Connectors and 1 or 2 End Wire Preparation
1	Black	-----	----	Component of Connector Block Assembly
2	Red	-----	----	Component of Connector Block Assembly
3	Black	-----	----	Component of Motor Assembly
4	Red	-----	----	Component of Motor Assembly

BULK LEAD WIRE - BULLETIN NO. 58-01-0003