



SERVICE PARTS LIST

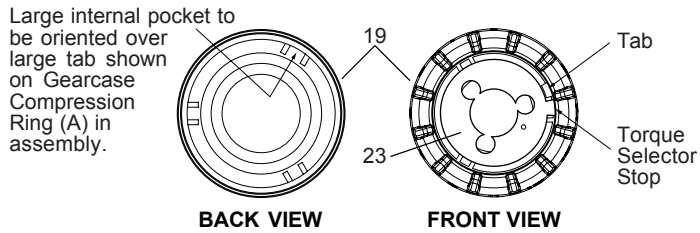
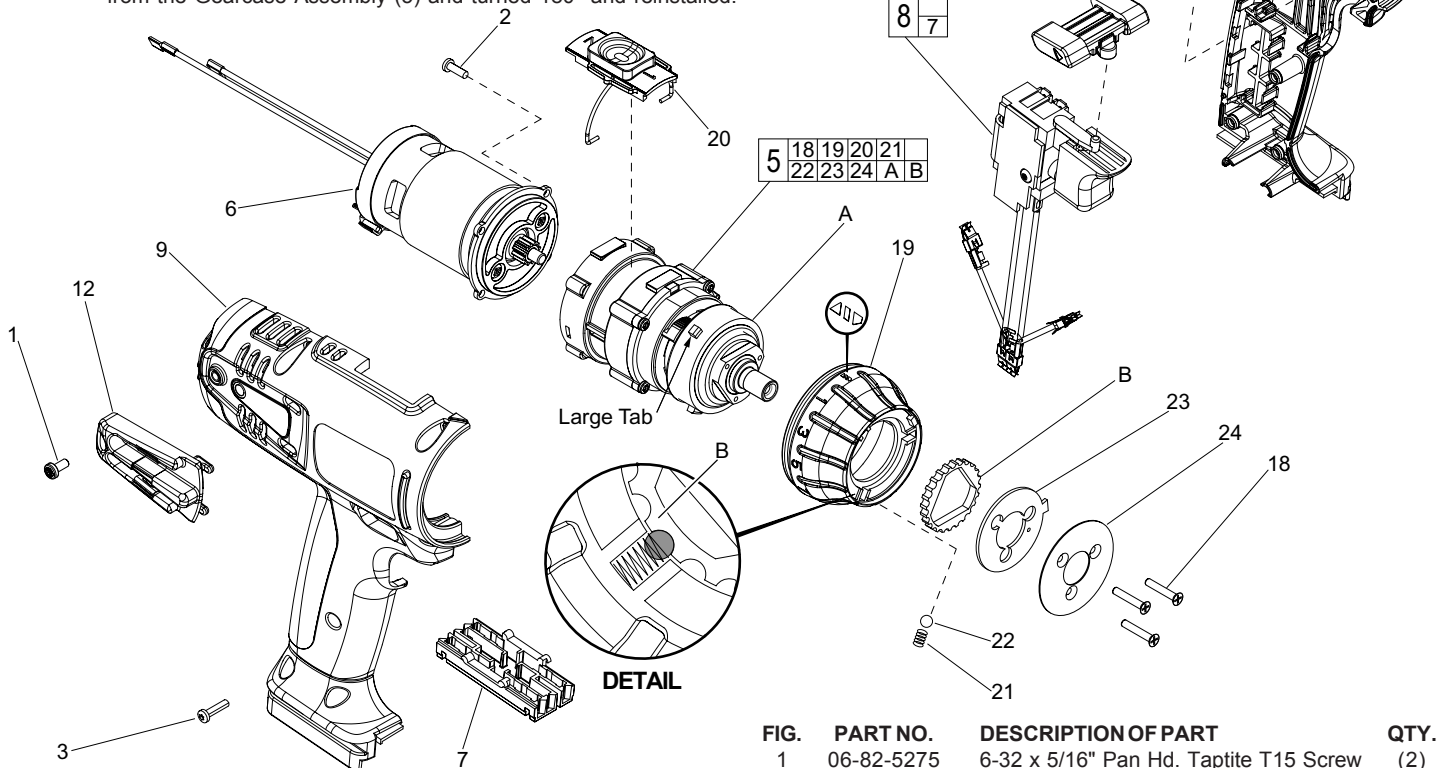
BULLETIN NO.
55-06-2350

SPECIFY CATALOG NO. AND SERIAL NO. WHEN ORDERING PARTS		REVISED BULLETIN	DATE
14.4 VOLT COMPACT DRIVER-DRILL			Jan. 2005
CATALOG NO. 0612-50	STARTING SERIAL NO. 311A	WIRING INSTRUCTION SEE REVERSE SIDE	

TORQUE SPECIFICATIONS					
FIG.	PART NO.	MIN. SEAT (IN-LBS)	MAX. SEAT (IN-LBS)	MIN. SEAT (Nm)	MAX. SEAT (Nm)
1	06-82-5275	7	10	.79	1.13
2	06-82-7218	7	10	.79	1.13
3	06-82-7225	6	9	.68	1.02

EXAMPLE:
Component Parts (Small #)
Are Included When Ordering
The Assembly (Large #).

FIG. 5,19 **NOTES:**
For proper torque and Selector Ring (19) orientation, gearcase compression spring must be collapsed fully. Turn the Gearcase Compression Ring (A) in a "clockwise" direction until it stops. The largest of the three tabs on the Compression Ring (A) must be at the 11:00 position (as viewed from the front of the Gearcase Assembly). If the largest of the three tabs stops at the 5:00 position, Compression Ring (A) will need to be removed from the Gearcase Assembly (5) and turned 180° and reinstalled.



5,19 Position Selector Ring (19) over Compression Ring (A), aligning the larger of the three internal pockets (see back view) over large tab on Compression Ring (A). Drill bit symbol on Selector Ring should be in the 12:00 position, in line with the arrow on top of the handle set.

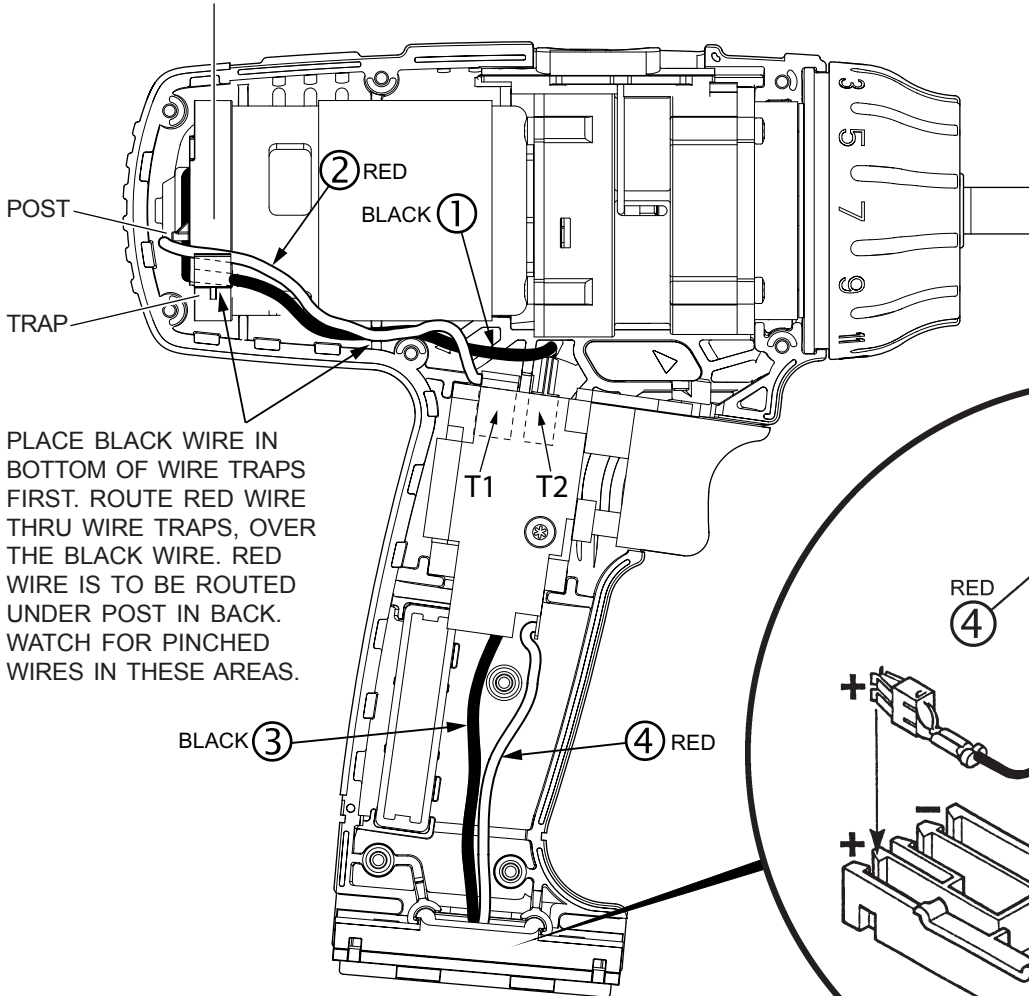
19,21,22 Position each Spring (21) and Ball (22) in the pockets of the Torque Selector (19) as shown in the detail.

B,18,21, 22,23,24 Position Torque Selector Cog (B) over triangle area in gearcase. Install Balls (22) and Springs (21) as illustrated in the detail view. Place Torque Selector Stop (23) against the bottom side of the tab, located inside the Torque Selector Ring (see front view). This will align the slots in the Torque Selector Stop (23) with the screw holes in the Gearcase Assembly (5). Place Cover Plate (24) over Torque Selector Stop (23), counter sink side to face chuck, and secure components together with Screws (18).

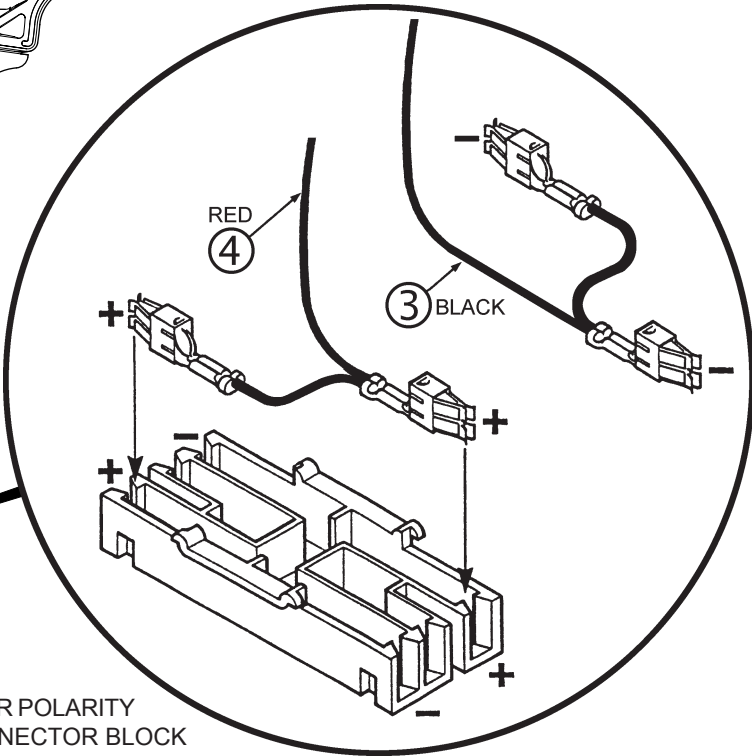
FIG.	PART NO.	DESCRIPTION OF PART	QTY.
1	06-82-5275	6-32 x 5/16" Pan Hd. Taptite T15 Screw	(2)
2	06-82-7218	4-20 x 3/8" Pan Hd. Plastite T10 Screw	(4)
3	06-82-7225	4-20 x 1/2" Pan Hd. Plastite T10 Screw	(9)
5	14-29-0160	Gearcase Assembly	(1)
6	14-50-0785	DC Motor	(1)
7	22-56-0195	Connector Block	(1)
8	23-66-0690	Switch Assembly	(1)
9	31-44-0970	Handle Set	(1)
11	43-72-0300	Belt Clip Holder	(1)
12	43-72-0455	Bit Holder Assembly	(1)
13	45-24-0525	Reversing Shuttle	(1)
18	05-78-0800	Flat Hd. Screw	(3)
19	42-76-0530	Torque Selector	(1)
20	45-24-0800	Hi/Low Shift Assembly	(1)
21	40-50-1340	Spring	(3)
22	02-02-1200	3mm Ball	(3)
23	-----	Torque Selector Stop	(1)
24	-----	Cover Plate	(1)
A	-----	Gearcase Spring Compression Ring	(1)
B	-----	Torque Selector Cog	(1)

WARNING **SWITCH POLARITY SENSITIVE**
 IF WIRED INCORRECTLY WITH THE CONNECTOR BLOCK, THE SWITCH **WILL BE DAMAGED AND DESTROYED.**

POSITION MOTOR ASSEMBLY SO THE WIRE TRAP IS TO THE BOTTOM OF THE TOOL, AS SHOWN.



PLACE BLACK WIRE IN BOTTOM OF WIRE TRAPS FIRST. ROUTE RED WIRE THRU WIRE TRAPS, OVER THE BLACK WIRE. RED WIRE IS TO BE ROUTED UNDER POST IN BACK. WATCH FOR PINCHED WIRES IN THESE AREAS.



NOTE:
 PROPER POLARITY IN CONNECTOR BLOCK REQUIRES LEADS TO BE CROSSED AS ILLUSTRATED.

WIRING SPECIFICATIONS				
Wire No.	Wire Color	Origin or Gauge	Length	Terminals, Connectors and 1 or 2 End Wire Preparation
1	Black	DC Motor	----	Component of DC Motor. Strip 1/8" for T2.
2	Red	DC Motor	----	Component of DC Motor. Strip 1/4" for T1.
3	Black	Switch	----	Component of Switch Assembly.
4	Red	Switch	----	Component of Switch Assembly.

TERMINAL DESCRIPTION		
Code	Part No.	Qty.
T1	23-74-0750	1
T2	23-74-2415	1