



SERVICE PARTS LIST

BULLETIN NO.
54-05-0128

SPECIFY CATALOG NO. AND SERIAL NO. WHEN ORDERING PARTS		REVISED BULLETIN 54-05-0127	DATE July '85
REVERSABLE HEAVY-DUTY DRAIN CLEANER			
CATALOG NO. 0566-1	STARTING SERIAL NO. 496-41500	WIRING INSTRUCTION 58-01-0015	

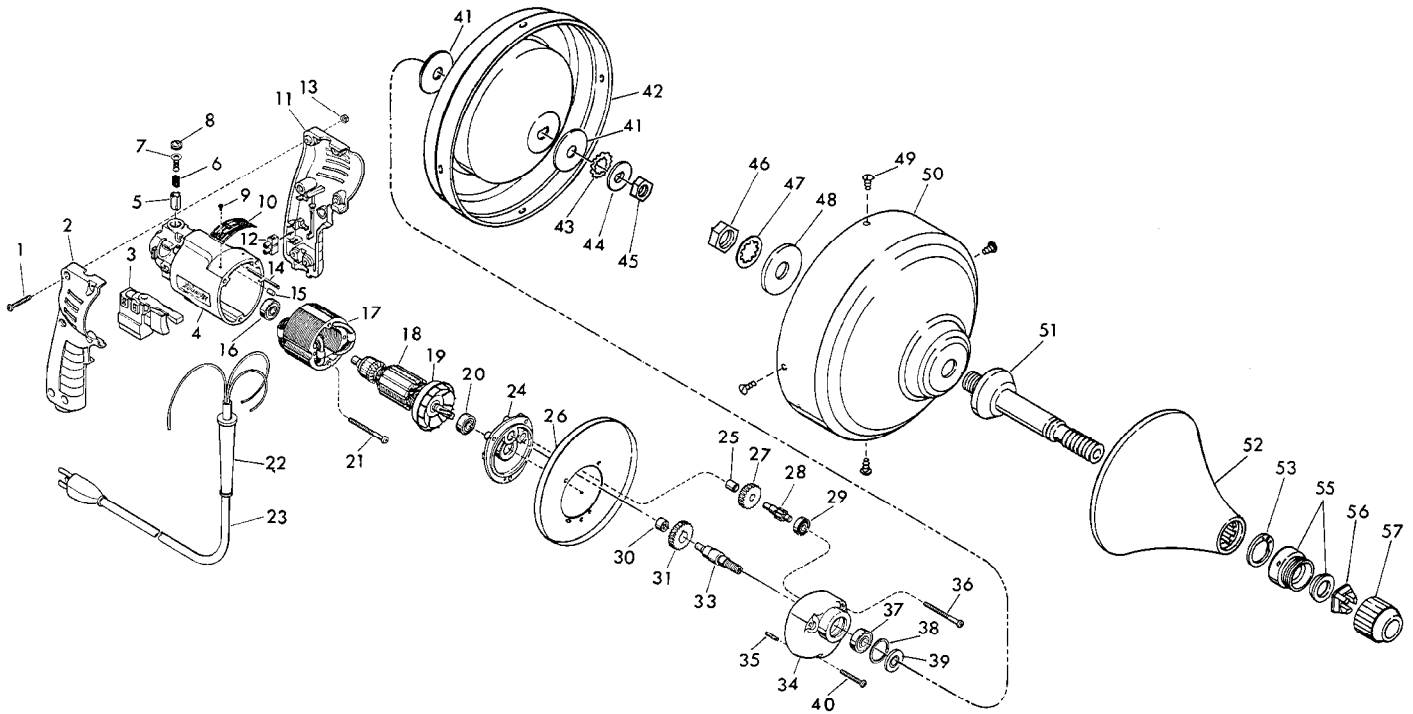


FIG.	PART NO.	DESCRIPTION OF PART	NO. REQ.	FIG.	PART NO.	DESCRIPTION OF PART	NO. REQ.
1	06-81-0473	8-32 x 1" Pan Hd. Pozidriv Screw	(6)	32	10-98-5986	Warning Label (Not Shown)	(1)
2	31-44-1130	Right Handle Half	(1)	★ 33	38-50-5630	Reversing Spindle	(1)
3	23-66-1255	Speed Control Switch	(1)	★ 34	28-14-1531	Gear Case	(1)
4	31-50-0340	Motor Housing	(1)	35	06-65-0825	1/8 x 1/2" Groove Pin	(1)
5	22-20-0530	Brush Tube	(2)	36	06-95-0145	7 x 1-3/4" Pan Hd. Pozidriv Screw	(2)
★ 6	22-16-0275	Carbon Brush	(2)	37	02-04-1020	Ball Bearing	(1)
7	23-52-0210	Brush Spring Assembly	(2)	38	34-80-1400	Retaining Ring	(1)
8	23-44-0120	Brush Retaining Screw	(2)	39	45-36-0621	Spacer	(1)
9	06-85-0200	Nameplate Screw	(2)	40	06-95-0137	7 x 1-1/8" Pan Hd. Pozidriv Screw	(1)
10	12-99-0312	Nameplate Blank	(1)	41	45-88-7730	Washer	(2)
11	31-44-1140	Left Handle Half	(1)	42	43-11-0021	Upper Drum Section	(1)
12	22-56-0455	Terminal Block	(1)	43	06-97-4130	Lock Washer	(1)
13	06-55-0835	8-32 Hex Nut	(6)	44	45-88-7235	"D" Hole Washer	(1)
14	44-60-0530	Ground Pin	(1)	45	06-55-2450	3/8 - 24 Hex Nut	(1)
15	45-30-0120	Ball Bearing Retaining Slug	(1)	46	06-55-3760	Special Hex Nut	(1)
16	02-04-0710	Ball Bearing	(1)	47	06-97-3010	Internal Lock Washer	(1)
17	18-10-0070	120 V. Field	(1)	48	45-88-7175	Washer	(1)
18	16-10-0570	120 V. Armature (Includes Fig. 19)	(1)	★ 49	06-95-0070	6-19 x 3/8" Plastite Pan Hd. Screw	(4)
19	22-84-0760	Fan Assembly	(1)	50	43-11-0031	Lower Drum Section	(1)
20	02-04-0847	Ball Bearing	(1)	51	38-50-5055	Spindle Assembly	(1)
21	06-95-0145	7 x 1-3/4" Pan Hd. Pozidriv Screw	(2)	52	43-54-0320	Hand Guard Assembly	(1)
22	44-76-0130	Cord Protector	(1)	53	34-60-2310	Retaining Ring	(1)
23	22-64-1120	Cord Set	(1)	54	48-66-0270	Chuck (Fig. Nos. 55 thru 57)	(1)
24	28-28-1640	Diaphragm	(1)	55	42-30-0270	Chuck Body and Thrust Plug	(1)
25	02-50-1210	Needle Bearing	(1)	56	42-77-0010	Chuck Collet	(1)
26	45-12-0215	Shield	(1)	57	45-22-0310	Chuck Sleeve	(1)
27	32-40-1131	Intermediate Gear	(1)				
28	36-66-0861	Intermediate Shaft	(1)				
29	02-04-0640	Ball Bearing	(1)				
30	02-50-1620	Needle Bearing	(1)				
31	32-75-1101	Spindle Gear	(1)				