



SERVICE PARTS LIST

BULLETIN NO.
54-06-2875

| | | | |
|--|---------------------------------|---|-----------|
| SPECIFY CATALOG NO. AND SERIAL NO. WHEN ORDERING PARTS | | REVISED BULLETIN | DATE |
| 3/8 INCH DRILL | | | Jan. 2003 |
| CATALOG NO. 0201-20 | STARTING SERIAL NO. 067A | WIRING INSTRUCTION 58-01-1805 | |

EXAMPLE:

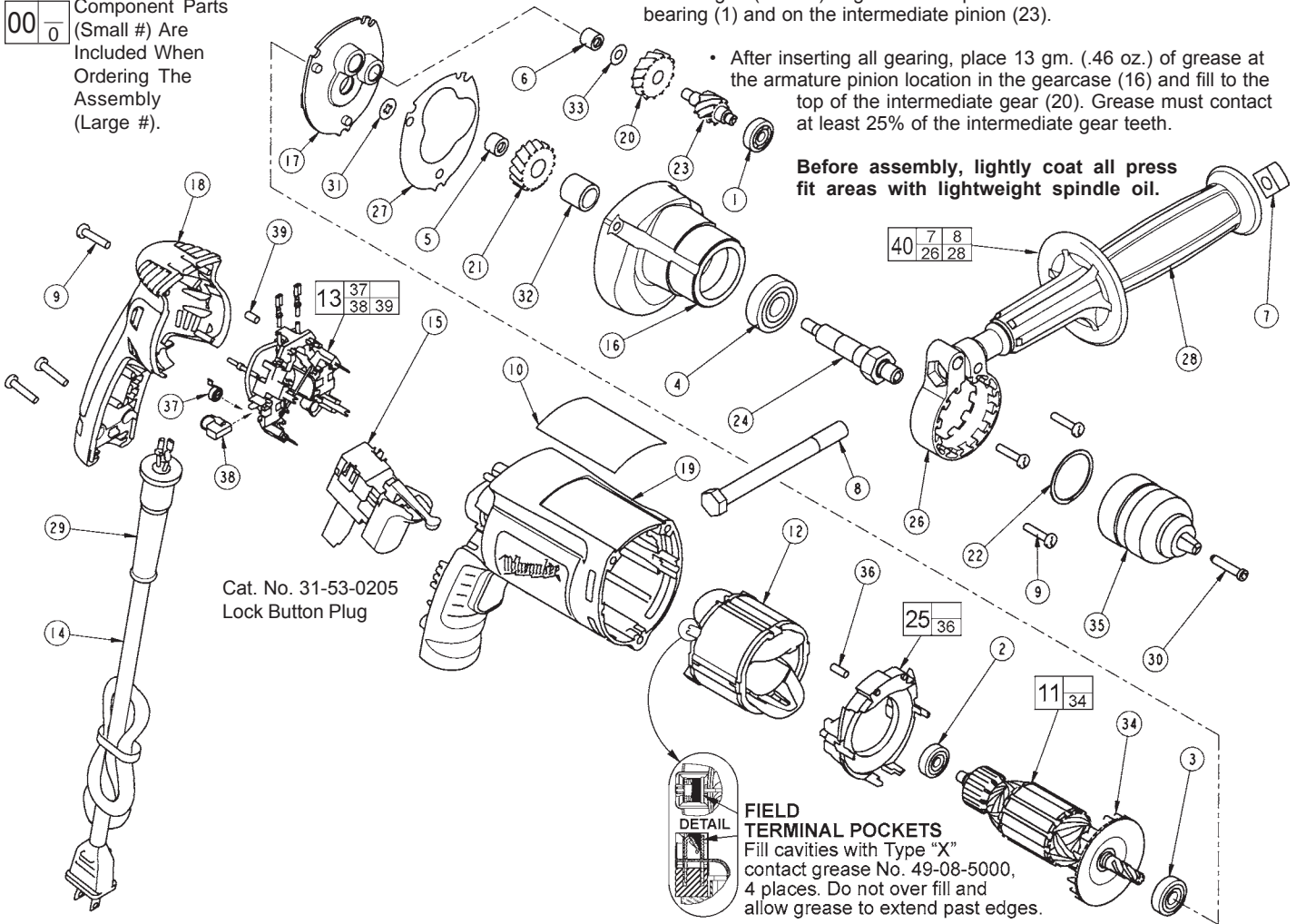
00
0

Component Parts
(Small #) Are
Included When
Ordering The
Assembly
(Large #).

LUBRICATION (Type "Y" Grease, No. 49-08-5270)

- Place 5 gm. (.02 oz.) of grease on top of the inserted intermediate ball bearing (1) and on the intermediate pinion (23).
- After inserting all gearing, place 13 gm. (.46 oz.) of grease at the armature pinion location in the gearcase (16) and fill to the top of the intermediate gear (20). Grease must contact at least 25% of the intermediate gear teeth.

Before assembly, lightly coat all press fit areas with lightweight spindle oil.



Cat. No. 31-53-0205
Lock Button Plug

FIELD TERMINAL POCKETS
Fill cavities with Type "X" contact grease No. 49-08-5000, 4 places. Do not over fill and allow grease to extend past edges.

| FIG. | PART NO. | DESCRIPTION OF PART | NO. REQ. | FIG. | PART NO. | DESCRIPTION OF PART | NO. REQ. |
|------|------------|----------------------------------|----------|------|------------|------------------------------|----------|
| 1 | 02-04-0640 | Ball Bearing | (1) | 26 | 42-68-0800 | Side Handle Clamp | (1) |
| 2 | 02-04-0645 | Ball Bearing | (1) | 27 | 43-44-0985 | Gasket | (1) |
| 3 | 02-04-0852 | Ball Bearing | (1) | 28 | 43-62-0845 | Side Handle | (1) |
| 4 | 02-04-1229 | Ball Bearing | (1) | 29 | 44-76-0210 | Cord Protector | (1) |
| 5 | 02-50-1611 | Needle Bearing | (1) | 30 | 45-04-0750 | Chuck Screw | (1) |
| 6 | 02-50-2400 | Needle Bearing | (1) | 32 | 45-36-1095 | Spindle Spacer | (1) |
| 7 | 06-54-0325 | 3/8-16 Square Nut | (1) | 33 | 45-88-7990 | Thrust Washer | (1) |
| 8 | 06-75-2850 | 3/8-16 x 5-1/2 Hex Cap Screw | (1) | 34 | 22-84-0845 | Fan | (1) |
| 9 | 06-82-7275 | 7-18 x 3/4 Slotted Plastite T-20 | (6) | 35 | 48-66-1530 | 3/8 Two Sleeve Keyless Chuck | (1) |
| 10 | 12-99-2665 | Service Nameplate | (1) | 36 | 45-30-0030 | Slug | (2) |
| 11 | 16-10-2215 | Armature | (1) | 37 | 23-52-1610 | Brush Spring | (2) |
| 12 | 18-07-2200 | Field | (1) | 38 | 22-18-1310 | Brush Assembly | (2) |
| 13 | 22-18-1210 | Brush Card Assembly | (1) | 39 | 45-30-0035 | Slug | (1) |
| 14 | 22-64-6510 | Cord Assembly | (1) | 40 | 49-15-0265 | Side Handle Assembly | (1) |
| 15 | 23-66-2585 | Switch | (1) | | | | |
| 16 | 28-14-2390 | Gearcase | (1) | | | | |
| 17 | 28-28-2320 | Diaphragm | (1) | | | | |
| 18 | 31-15-2010 | Handle Halve | (1) | | | | |
| 19 | 31-50-2050 | Motor Housing | (1) | | | | |
| 20 | 32-40-0100 | Intermediate Gear | (1) | | | | |
| 21 | 32-75-0115 | Spindle Gear | (1) | | | | |
| 22 | 34-80-2300 | Retaining Ring | (1) | | | | |
| 23 | 36-66-0125 | Intermediate Shaft | (1) | | | | |
| 24 | 38-50-5750 | Spindle | (1) | | | | |
| 25 | 42-14-0460 | Baffle Assembly | (1) | | | | |

FIG. 4,21 NOTES:
Support the output ball bearing inside the gearcase before pressing off the spindle gear.

5,6 Needle bearings to be pressed flush to .010 under flush from the end which has the vendors identification.

MILWAUKEE ELECTRIC TOOL CORPORATION
13135 W. LISBON RD., BROOKFIELD, WI 53005